

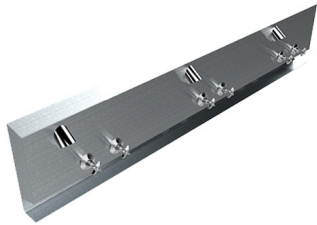
# Shower Panel



WELS REG # 503994



Scan QR code  
to view our  
installation notes



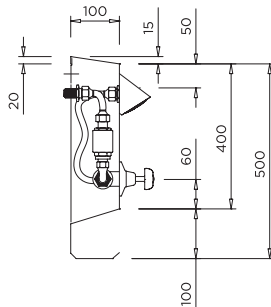
## BSP

### To order this item please advise:

- Overall panel length
- No. of tap sets required
- Tap configuration: Hot & Cold; or Timed flow single temp
- Tap style: Anti-ligature or Standard

### Product Info:

- Available in custom sizes
- Integrated soap shelf
- Supplied pre-plumbed
- Choice of anti-vandal tapware options
- Commercial grade 304 stainless



## INSTALLATION NOTES

1) Fixture strength is ultimately determined by the load capacity of the supporting structure (noggins recommended for stud walls) and use of appropriate fixings (not supplied). 2) Shower panel is affixed to rear wall via an offset bracket (supplied) positioned behind the top of the panel and via fixing holes integrated into the panel along the back of the soap tray. 3) Water connections are subject to tapware selected for installation. Contact Britex for more info.

