

WALL MOUNTED HAND BASIN ROUND

6.10

HAND BASINS

#HBWMR / WALL MOUNTED HAND BASIN ROUND



Scan QR code
to view online



features and benefits

- Economy model
- Grade 304 satin S.S.
- 50mm blade upstand to rear
- 40mm waste & wall brackets supplied
- 26mm front fascia
- 6 litre bowl capacity
- 1 or 2 tap holes
- Choice of tapware styles

about

The *BRITEX Stainless Steel Round Wall Mounted Hand Basin* is an economical hand basin, suitable for use in public amenities, sporting clubs and commercial projects. Supplied complete with heavy duty wall bracket, 40mm waste outlet and tap holes as required.

sample spec. text

BRITEX S.S. Round Wall Mounted Hand Basin. 360L x 365W x 126D. Integral 26mm front fascia and 50mm blade rear upstand. Supplied complete with wall bracket, 40mm waste outlet and XXXX tapware. Product Code HBWMR-TW-XXXX

NB Please refer to reverse page for tapware and basin options

*RED TEXT may denote a **variable** where one option only is to be selected, a **nominal dimension** that needs to be specified, or an **optional feature** that can be removed if not required. Please refer to the back of this page for additional specification details and options.

VISIT BRITEX.COM.AU TO DOWNLOAD BIM FILES, CAD DRAWINGS AND THE MOST CURRENT PRODUCT LITERATURE.



MELBOURNE
Britex Place, Mirra Crt
Bundoora VIC 3083
t (03) 9466 9000
f (03) 9466 9044

SYDNEY
16 Northumberland Drv
Taren Point NSW 2229
t (02) 9531 2100
f (02) 9531 2800

PERTH
14 Capital Rd
Malaga WA 6090
t (08) 9249 5464
f (08) 9248 6893

BRISBANE
19 Manila St
East Brisbane QLD 4169
t (07) 3363 2400
f (07) 3363 2444

ADELAIDE
The Britex Group
SA State Office
t 1300 764 744
f 1300 784 306

britex.com.au | info@britex.com.au | A.B.N 83 004 309 737

WALL MOUNTED HAND BASIN ROUND

PRODUCT CODE

HBWMR Basin only

HOW TO SPECIFY: Wall Mounted Hand Basin Round

Sample Specification Code

A **B**
HBWMR - TW-9201

= Wall Mounted Hand Basin Round with Deluxe Timed Flow Pillar Tap

Specification Key

A = Product Code

B = Tapware (if required)
 (see below for suggested tapware options)

Suggested Tapware Options:

(see Tapware Section: 11 for complete range of options)



TW-9201
 Deluxe Timed Flow Pillar Tap



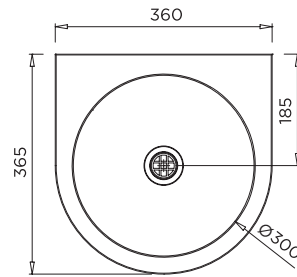
TW-9101
 Eco Timed Flow Pillar Tap



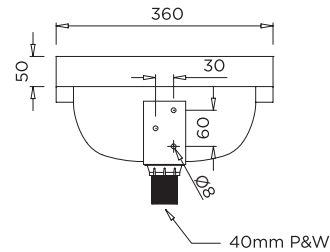
TW-9110
 Euro Basin Mounted Sensor Tap



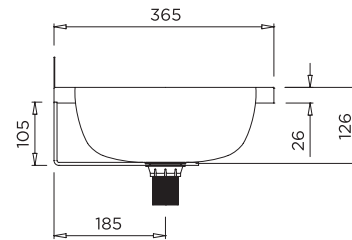
TW-MIX-01
 Basin Mounted Flick Mixer



MODEL HBWMR Plan



MODEL HBWMR Rear Elevation



MODEL HBWMR Side Elevation

When specifying this product please include:

- Product Name and Code
- Product Dimensions
- Tapware details (if required)

specifying guide

options

- Tap holes
- Splashback Panel - Up to 500mm High

VISIT BRITEX.COM.AU TO DOWNLOAD BIM FILES, CAD DRAWINGS AND THE MOST CURRENT PRODUCT LITERATURE.

Last Revised June 2017



Due to ongoing research and our commitment to product development, details are subject to change without notice. Details accurate at time of print. Please refer to britex.com.au for the most current product information. Allow +/- 5mm tolerance for dimensions and setouts shown in product literature.

britex.com.au | info@britex.com.au | A.B.N 83 004 309 737

