

Image shows Model TP8-F
Wall Mounted Trough
with front fascia

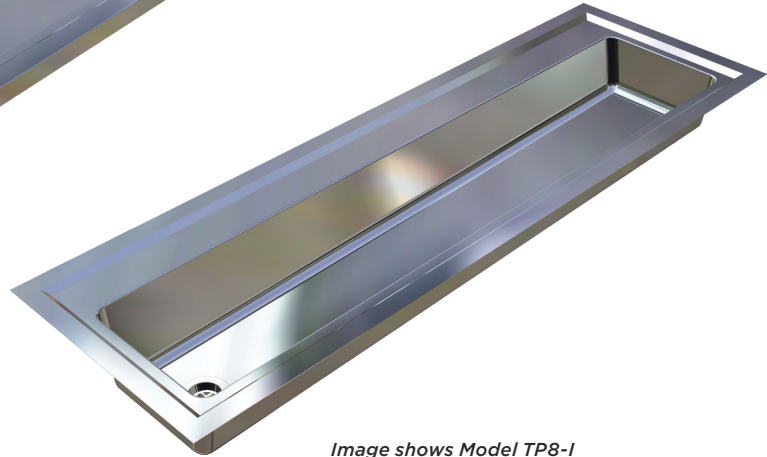


Image shows Model TP8-I
Inset Trough

Scan QR code
to view online



features and benefits

- Inset and wall mounted models
- 480mm or 600mm wide
- Made to custom lengths
- Radius internal trough corners for easy cleaning
- Rear hob for mounting tapware
- Left or right hand waste position
- 50mm waste supplied
- Optional Pre-Plumbed tapware
- Commercial grade 304 S.S.
- Ideal for schools, workshops and public amenities

about

The *BRITEX Stainless Steel Art Trough* is a versatile trough that can be used for a large range of applications, commonly in education projects. Inset and fascia style models are available for bench and wall mounting respectively. Made from 1.2mm grade 304 stainless steel and possessing rounded corners it is easy to clean and is available in custom lengths with either left or right hand waste position. Wall mounted models are supplied with heavy duty wall brackets and front legs are available if additional support is required.

sample spec. text

BRITEX 1.2mm grade 304 S.S. *Inset/Fascia Art Trough* - XXXXL x 480/600W x 150D complete with left/right hand 50mm waste outlet - Code TP8- X

*RED TEXT may denote a variable where one option only is to be selected, a nominal dimension that needs to be specified, or an optional feature that can be removed if not required. Please refer to the back of this page for additional specification details and options.

VISIT BRITEX.COM.AU TO DOWNLOAD BIM FILES, CAD DRAWINGS AND THE MOST CURRENT PRODUCT LITERATURE.



MELBOURNE
Britex Place, Mirra Crt
Bundoora VIC 3083
t (03) 9466 9000
f (03) 9466 9044

SYDNEY
16 Northumberland Drv
Taren Point NSW 2229
t (02) 9531 2100
f (02) 9531 2800

PERTH
Unit 1/8 Principal Link
Malaga WA 6090
t (08) 9249 5464
f (08) 9248 6893

BRISBANE
19 Manilla St
East Brisbane QLD 4169
t (07) 3363 2400
f (07) 3363 2444

ADELAIDE
The Britex Group
SA State Office
t 1300 764 744
f 1300 784 306

ART TROUGH

4.18

TROUGHS

#TP8 / ART TROUGH

PRODUCT CODE

TP8-F

Fascia style (480mm wide)

TP8-I

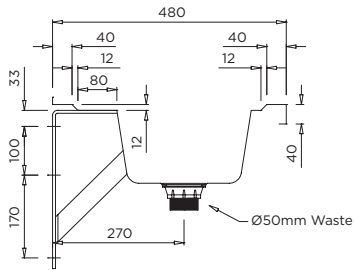
Inset style (480mm wide)

TP8-FW

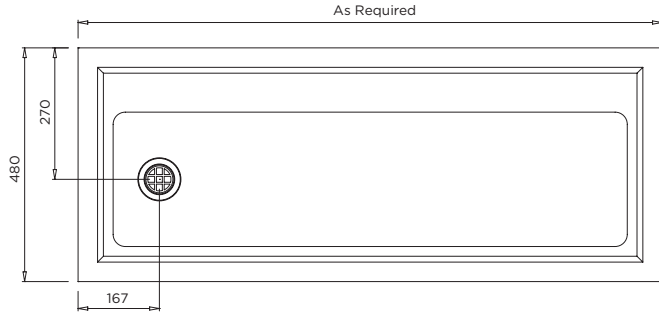
Fascia style (600mm wide)

TP8-IW

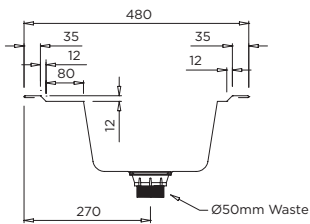
Inset style (600mm wide)



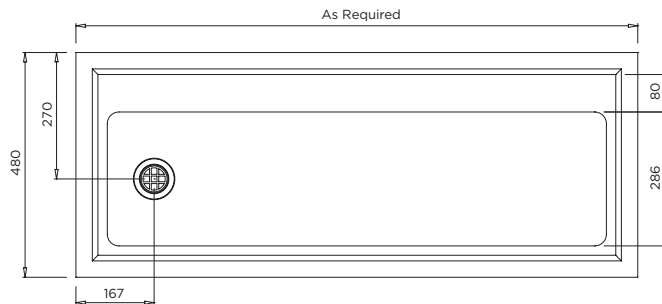
MODEL TP8-F Section



MODEL TP8-F Plan and Front Elevation



MODEL TP8-I Section



MODEL TP8-I Plan and Front Elevation

When specifying this product please include:

- Product **Name** and **Code**
- Product **Dimensions**
- **Tapware** details (if required)
- Position of **Waste Outlet** (left/right)

specifying guide

options

- Tapware - see Tapware Section: 11
- Tap Holes
- Custom lengths
- Inset or Fascia styles
- 480mm or 600mm widths
- Legs with Fascia style
- Left or right hand waste outlet

VISIT BRITEX.COM.AU TO DOWNLOAD BIM FILES, CAD DRAWINGS AND THE MOST CURRENT PRODUCT LITERATURE.