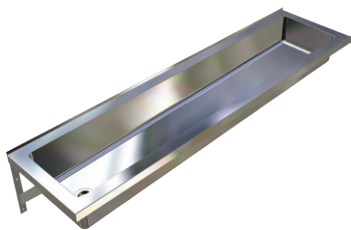


# Practical Trough



TP7-F  
TP7-I

Scan QR code  
to view our  
installation notes

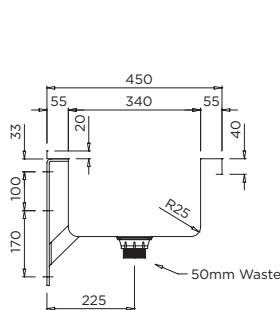


To order this item please advise:

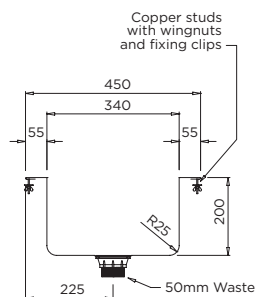
- Inset or Fascia (wall mounted) model
- Trough length
- Waste position - Left or Right

## Product Info:

- Inset and Fascia (wall mounted) models
- Standard and custom lengths
- 450mm or 600mm wide
- Radius internal corners
- 50mm waste supplied



TP7-F

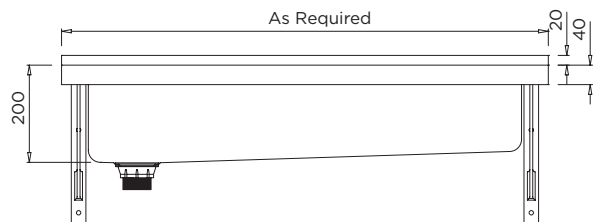
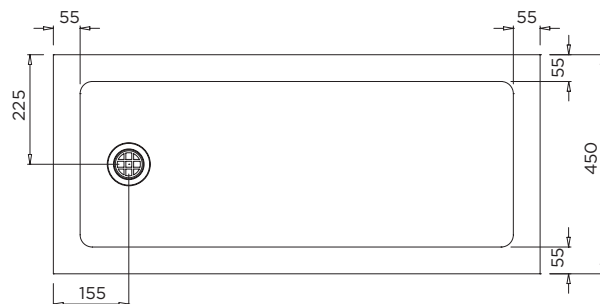


TP7-I

## INSTALLATION NOTES

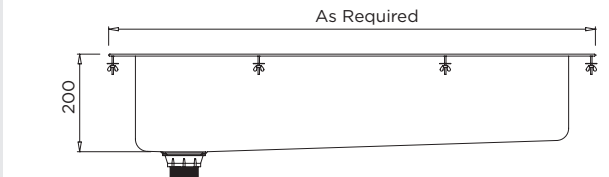
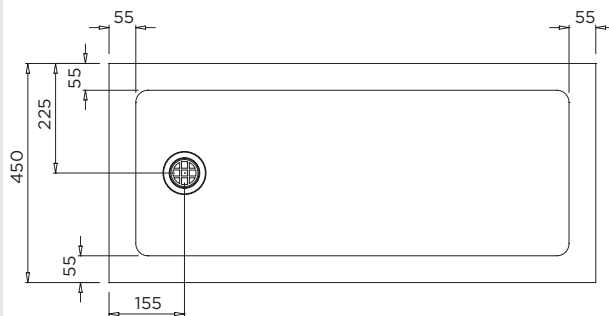
**Wall Mounted (Fascia) model:** 1) Trough is mounted to wall via two end brackets (inserted into end fascias of trough). 2) A centre bracket that supports the underside of the fixture is supplied for troughs over 2000mm. 3) To further secure the trough to the rear wall and to prevent shifting of the brackets once screws have been tightened, an adhesive tape or silicon can be applied to the rear tile flange and to the underside of the end fascia where it is in contact with the bracket. 4) Screw holes may also be drilled in the rear tile flange if desired.

**Inset model:** 1) Cut out for trough is overall L x W dimensions (including end flanges) minus 20mm, which leaves a 10mm overhang on all four sides for mounting on bench top. 2) Fixing clips are tightened to locate and secure copper studs to the inside of the cutout. 3) A silicon sealant or adhesive tape can be applied to the underside perimeter of flange for additional sealing and securing where required.



Troughs over 2000mm long are supplied with a centre support bracket

TP7-F



TP7-I