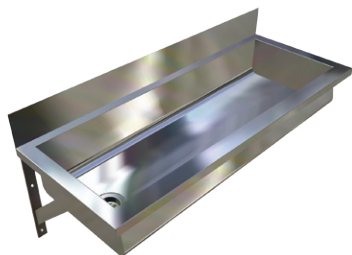


Pattern Trough No.2

TP2



Scan QR code
to view our
installation notes

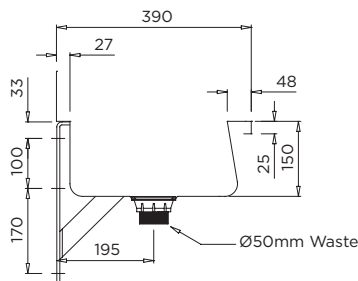


To order this item please advise:

- Trough length
- Waste position - Left or Right
- Tap quantity and code (if required)

Product Info:

- Anti-splash design
- Made to custom lengths
- Commercial grade 304 S.S.
- Wall brackets and 50mm waste supplied



INSTALLATION NOTES

1) Fixture strength is ultimately determined by the load capacity of the supporting structure (noggins recommended for stud wall construction) and use of appropriate fixings (i.e. sleeve anchors for masonry walls).
 2) Trough is mounted to wall via two end brackets (inserted into end fascias of trough).
 3) A centre bracket that supports the underside of the fixture is supplied for troughs over 2000mm.
 4) To further secure the trough to the rear wall and to prevent shifting of the brackets once screws have been tightened, an adhesive tape or silicon can be applied to the rear tile flange and to the underside of the end fascia where it is in contact with the bracket.
 5) Screw holes may also be drilled near the top of the rear splashback if desired.
 6) Front support legs supplied only by specific request.

Suggested Tapware:

(see Tapware Section: 11 for complete range of options)



TW-0007
Top Activated Timed
Flow Bib Tap



TW-0048
Top Lever Timed
Flow Bib Tap



TW-9106
Front Lever Timed
Flow Bib Tap



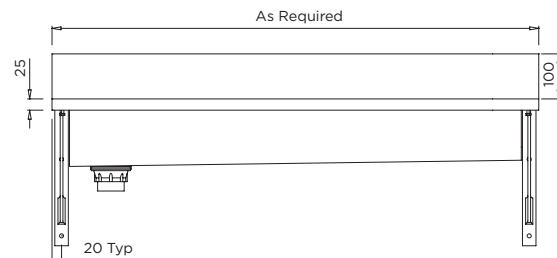
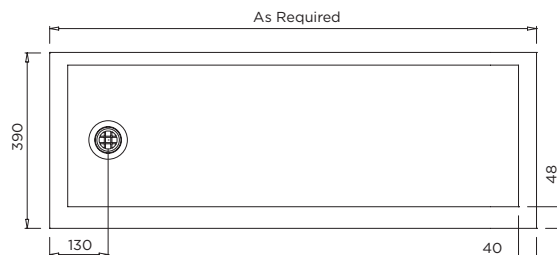
TW-9104
Timed Flow Bib Tap



TW-9203
Deluxe Timed Flow
Bib Tap



TW-SET-01
Wall Mounted Tap Set



Troughs over 2000mm long are supplied with a centre support bracket