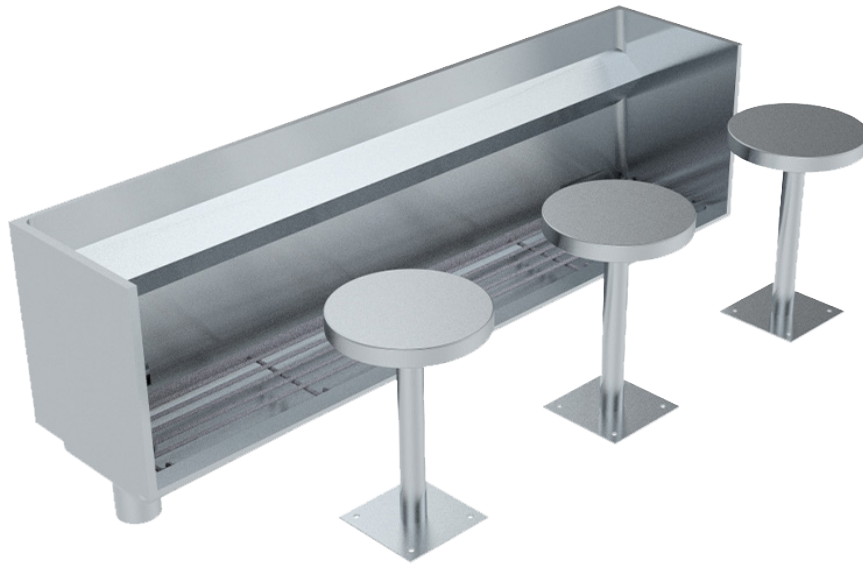


# WUDU FOOT WASH TROUGH

4.24

TROUGHS

#TWUDU / WUDU FOOT WASH TROUGH



Scan QR code  
to view online



Image shows Model TWUDU with optional heavy duty S.S. stools

## features and benefits

- Designed for foot washing/Wudu
- Used in Islamic cultural buildings
- Commercial grade 304 S.S.
- Integral foot rest
- Floor Mounted or Recessed Models
- Optional heavy duty S.S. stool(s)
- Manufactured to custom lengths
- Hinged grate for easy cleaning
- Installed between walls
- Freestanding end(s) optional

## about

The **BRITEX Stainless Steel Wudu Foot Wash Trough** is designed specifically for the foot washing process during wudu in Islamic cultural buildings. Manufactured from durable 1.2mm grade 304 stainless steel wudu troughs incorporate an angled rear foot resting ledge and a hinged floor grate below to allow for ease of cleaning. All units are made to custom lengths to fit between walls. Freestanding units can be supplied where required. Heavy Duty S.S. stools optional.

## sample spec. text

BRITEX Wudu Foot Wash Trough - Grade 304 stainless steel. XXXXmmL x 400mmW O/A. *Floor Mounted/ Recessed* model, supplied complete with foot resting ledge, hinged grate 50/100 mm waste outlet to left/ right hand end, and X No. of Heavy Duty S.S. Stools - Product Code TWUDU

\*RED TEXT may denote a **variable** where one option only is to be selected, a **nominal dimension** that needs to be specified, or an **optional feature** that can be removed if not required. Please refer to the back of this page for additional specification details and options.

VISIT [BRITEX.COM.AU](http://BRITEX.COM.AU) TO DOWNLOAD BIM FILES, CAD DRAWINGS AND THE MOST CURRENT PRODUCT LITERATURE.



**MELBOURNE**  
Britex Place, Mirra Crt  
Bundoora VIC 3083  
t (03) 9466 9000  
f (03) 9466 9044

**SYDNEY**  
16 Northumberland Drv  
Taren Point NSW 2229  
t (02) 9531 2100  
f (02) 9531 2800

**PERTH**  
Unit 1/8 Principal Link  
Malaga WA 6090  
t (08) 9249 5464  
f (08) 9248 6893

**BRISBANE**  
19 Manilla St  
East Brisbane QLD 4169  
t (07) 3363 2400  
f (07) 3363 2444

**ADELAIDE**  
The Britex Group  
SA State Office  
t 1300 764 744  
f 1300 784 306

[britex.com.au](http://britex.com.au) | [info@britex.com.au](mailto:info@britex.com.au) | A.B.N 83 004 309 737

# WUDU FOOT WASH TROUGH

PRODUCT CODE

## TWUDU

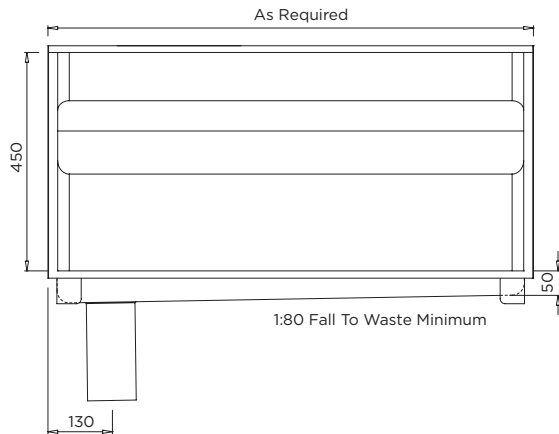
**Suggested Tapware (supplied separate):**



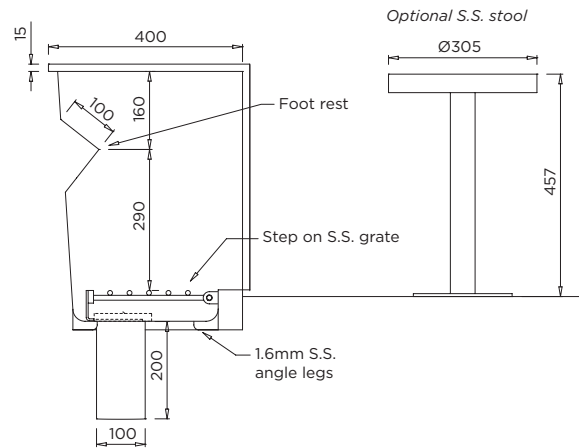
**TW-SET-01**  
Wall Sink Set with  
Fixed Spout



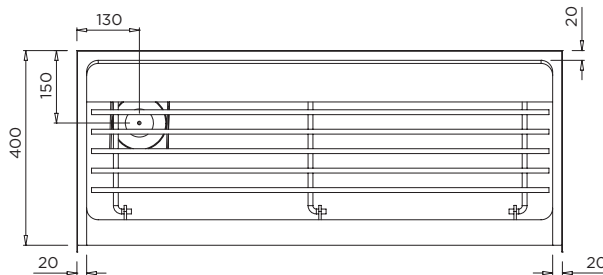
**TW-0008**  
Vandal Resistant  
Deluxe Bib Tap



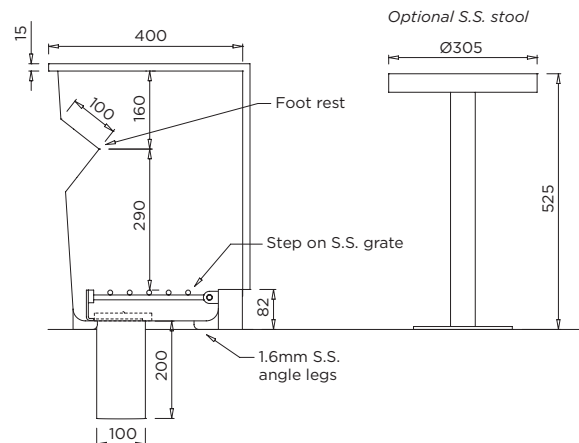
**MODEL TWUDU** Front Elevation



**MODEL TWUDU** Section: Recessed Model



**MODEL TWUDU** Plan



**MODEL TWUDU** Section: Floor Mounted Model

*When specifying this product please include:*

specifying guide

- Product **Name** and **Code**
- Product **Features**
- Product **Dimensions**
- **Floor Mounted** or **Recessed**
- Position of **Waste Outlet** (left/right)
- **End Type** - between walls or freestanding
- No. of **Stools** (if required)

options

- Custom Lengths
- Freestanding Ends
- Left or Right Hand Waste
- 100mm or 50mm waste outlet
- Floor Mounted or Recessed
- Heavy duty S.S. stools

VISIT [BRITEX.COM.AU](http://BRITEX.COM.AU) TO DOWNLOAD BIM FILES, CAD DRAWINGS AND THE MOST CURRENT PRODUCT LITERATURE.

Last Revised June 2017