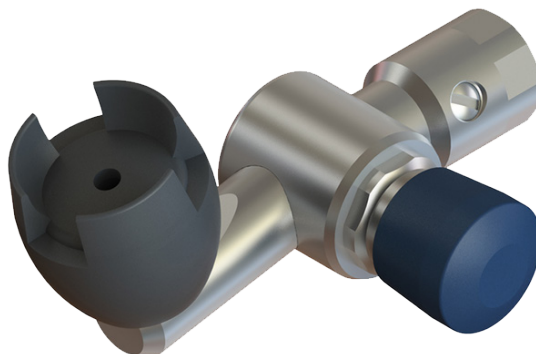


# 316 SS DRINK SAFE™ 45 DEGREE PUSH BUTTON BUBBLER



WELS REG # T30735



## features and benefits

- 316 stainless steel construction
- Rubber mouthguard designed to protect teeth in the rough and tough environment of the schoolyard and playground
- The mouthguard is made from a nitrile compound which is AS 4020 approved and has a high resistance to fungal and bacterial attack
- The rubber compound used has a high degree of saturation to ensure the unit has a greater resistance to sunlight and environmental ageing and therefore a long life in the field
- Vandal resistant design
- Inbuilt adjustment for consistency of water flow
- Easy to use self-closing mechanism

## about

BRITEX 316 SS Drink Safe™ 45 Degree Push Button Bubbler includes water-conserving and cost-effective properties, the Drink Safe™ bubbler is made from stainless steel material and is completely free of lead, aligning with Australian Building Codes Board advice. With inbuilt adjustment for consistency of water flow, easy self-closing mechanism and a high resistance to fungal and bacterial attack from the rubber mouthguard, the Drink Safe™ bubbler is ideal for education applications and public areas.

## sample spec. text

*Britex 316 SS Drink Safe™ 45 Degree Push Button Bubbler- Product Code: TW-DP45-SS*

\*RED TEXT may denote a **variable** where one option only is to be selected, a **nominal dimension** that needs to be specified, or an **optional feature** that can be removed if not required. Please refer to the back of this page for additional specification details and options.

VISIT [BRITEX.COM.AU](http://BRITEX.COM.AU) TO DOWNLOAD BIM FILES, CAD DRAWINGS AND THE MOST CURRENT PRODUCT LITERATURE.



**MELBOURNE**  
Britex Place, Mirra Crt  
Bundoora VIC 3083  
t (03) 9466 9000  
f (03) 9466 9044

**SYDNEY**  
16 Northumberland Drv  
Taren Point NSW 2229  
t (02) 9531 2100  
f (02) 9531 2800

**PERTH**  
Unit 1/8 Principal Link  
Malaga WA 6090  
t (08) 9249 5464  
f (08) 9248 6893

**BRISBANE**  
19 Manilla St  
East Brisbane QLD 4169  
t (07) 3363 2400  
f (07) 3363 2444

**ADELAIDE**  
The Britex Group  
SA State Office  
t 1300 764 744  
f 1300 784 306

[britex.com.au](http://britex.com.au) | [sales@britex.com.au](mailto:sales@britex.com.au) | A.B.N 83 004 309 737

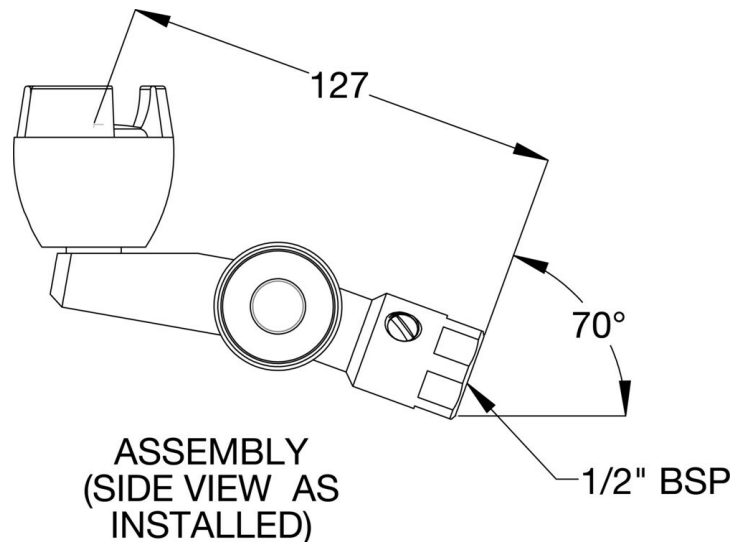
# 316 SS DRINK SAFE™ 45 DEGREE PUSH BUTTON BUBBLER

PRODUCT CODE

## TW-DP45-SS



**WELS:** 6 Star Rating (2L/min)  
**Nominal Flow Rate (LPM):** 1.7  
**WaterMark:** AS/NZS 3718 Lic. WMKA0034  
**Inlet:** 1/2" BSP Female  
**Outlet:** Metal Mouthguard  
**Headwork:** Push Button  
**Working Pressure Range (kPa):** 50 - 500  
**Working Temperature Range (°C):** 5 - 60 °C  
**Construction:** Lead Safe™ DZR Brass\*  
**Finish:** Chrome



*When specifying this product please include:*

- Product Name and Code

VISIT [BRITEX.COM.AU](http://BRITEX.COM.AU) TO DOWNLOAD BIM FILES, CAD DRAWINGS AND THE MOST CURRENT PRODUCT LITERATURE.

*Last Revised Oct 2023*



Due to ongoing research and our commitment to product development, details are subject to change without notice. Details accurate at time of print. Please refer to [britex.com.au](http://britex.com.au) for the most current product information. Allow +/- 5mm tolerance for dimensions and setouts shown in product literature.

[britex.com.au](http://britex.com.au) | [sales@britex.com.au](mailto:sales@britex.com.au) | A.B.N 83 004 309 737

