

DELUXE TIMED FLOW PILLAR TAP



WELS REG. # T15006



features and benefits

- In-built self-cleaning mechanism
- Push button and lever action models
- WaterMark certified
- Industry-leading water saving benefits
- Can't be left running after use
- Robust construction
- 7.5 3 2.5 second flow time

about

Technologically advanced, hands free tapware, BRITEX Wall Mounted Sensor Tap with 165mm Spout is designed to reduce the risk of disease caused by cross contamination when operating tapware. Operation occurs when a hand or object passes within 50-100mm on the sensor. 5 Star WELS rated spout. Water then flows from the outlet until the pre selected time cycle has expired. Alternatively the flow can be terminated at any time by passing a hand or object in front of the sensor again. Ideal for health care facilities, food preparation areas, care facilities and in public washrooms.

sample spec. text

Britex Deluxe Timed Flow Pillar Tap - Product Code: TW-9204

*RED TEXT may denote a **variable** where one option only is to be selected, a **nominal dimension** that needs to be specified, or an **optional feature** that can be removed if not required. Please refer to the back of this page for additional specification details and options.

VISIT BRITEX.COM.AU TO DOWNLOAD BIM FILES, CAD DRAWINGS AND THE MOST CURRENT PRODUCT LITERATURE.



MELBOURNE
Britex Place, Mirra Crt
Bundoora VIC 3083
t (03) 9466 9000
f (03) 9466 9044

SYDNEY
16 Northumberland Drv
Taren Point NSW 2229
t (02) 9531 2100
f (02) 9531 2800

PERTH
Unit 1/8 Principal Link
Malaga WA 6090
t (08) 9249 5464
f (08) 9248 6893

BRISBANE
19 Manilla St
East Brisbane QLD 4169
t (07) 3363 2400
f (07) 3363 2444

ADELAIDE
The Britex Group
SA State Office
t 1300 764 744
f 1300 784 306

britex.com.au | sales@britex.com.au | A.B.N 83 004 309 737

DELUXE TIMED FLOW PILLAR TAP

PRODUCT CODE

TW-9204



technical
information

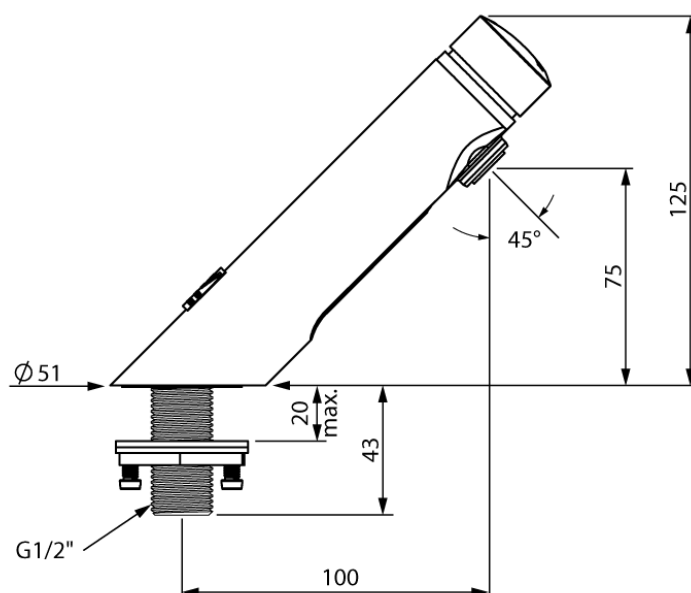
WELS: 5 Star Rating (5L/min)

Inlet Connection: 15mm 1/2" BSP

Recommended Working Pressure: 250-350 kPa

Operating Working Pressure: 80 - 500 kPa

Maximum Water Temperature: 50°C



specifying
guide

*When specifying this
product please include:*

- Product Name and Code

VISIT BRITEX.COM.AU TO DOWNLOAD BIM FILES, CAD DRAWINGS AND THE MOST CURRENT PRODUCT LITERATURE.

Last Revised Dec 2023