

HOB MOUNTED ECO TIMED FLOW TAP - WARM



WELS REG # T28485



features and benefits

- In-built self-cleaning mechanism
- Push button and lever action models
- WaterMark certified
- Industry-leading water saving benefits
- Can't be left running after use
- Robust construction
- 7 (-2/2+) second flow time

about

The range of timed flow pillar taps offered by BRITEX has been methodically selected to complement specific stainless steel basins, troughs and sinks within the Britex range. Featuring a self-cleaning mechanism that prolongs the working life of the tap and reduces the likelihood of maintenance work being required. Timed flow pillar taps are supplied with either push button or lever activation, are WaterMark certified and provide industry-leading water saving benefits. Manufactured from DR brass and heavy duty in construction, these taps can withstand high degrees of wear and tear and are ideal for installing in public amenities. We are proud to offer these premium quality taps in conjunction with our own first class fixtures.

sample spec. text

Hob Mounted Eco Timed Flow Tap - Warm - Product Code: TW-9107

*RED TEXT may denote a **variable** where one option only is to be selected, a **nominal dimension** that needs to be specified, or an **optional feature** that can be removed if not required. Please refer to the back of this page for additional specification details and options.

VISIT BRITEX.COM.AU TO DOWNLOAD BIM FILES, CAD DRAWINGS AND THE MOST CURRENT PRODUCT LITERATURE.



MELBOURNE
Britex Place, Mirra Crt
Bundoora VIC 3083
t (03) 9466 9000
f (03) 9466 9044

SYDNEY
16 Northumberland Drv
Taren Point NSW 2229
t (02) 9531 2100
f (02) 9531 2800

PERTH
Unit 1/8 Principal Link
Malaga WA 6090
t (08) 9249 5464
f (08) 9248 6893

BRISBANE
19 Manilla St
East Brisbane QLD 4169
t (07) 3363 2400
f (07) 3363 2444

ADELAIDE
The Britex Group
SA State Office
t 1300 764 744
f 1300 784 306

britex.com.au | sales@britex.com.au | A.B.N 83 004 309 737

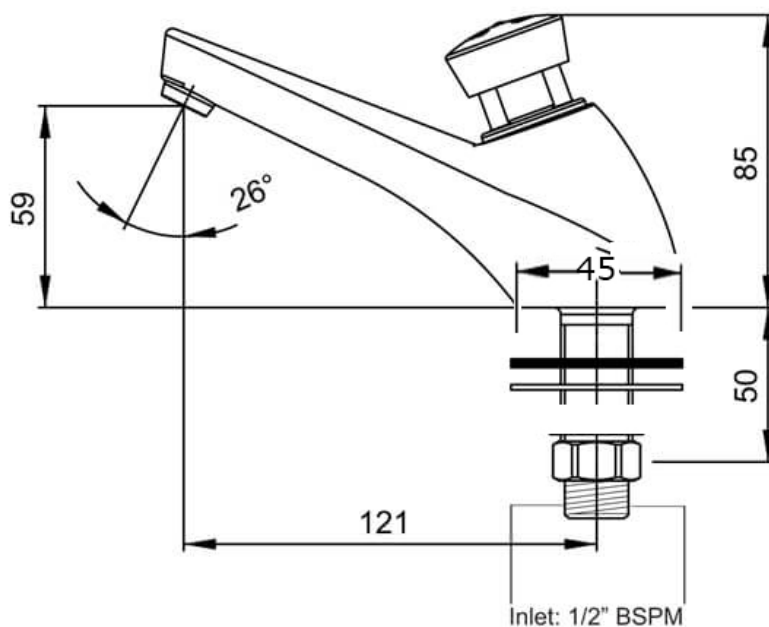
HOB MOUNTED ECO TIMED FLOW TAP - WARM

PRODUCT CODE

TW-9107



WELS: 6 Star Rating (4.5L/min)
WaterMark: AS/NZS 3718 Lic. WMKA20010
Inlet: 1/2" mm BSPM



When specifying this product please include:

- Product Name and Code

VISIT [BRITEX.COM.AU](https://www.britex.com.au) TO DOWNLOAD BIM FILES, CAD DRAWINGS AND THE MOST CURRENT PRODUCT LITERATURE.

Last Revised Nov 2023



Due to ongoing research and our commitment to product development, details are subject to change without notice. Details accurate at time of print. Please refer to [britex.com.au](https://www.britex.com.au) for the most current product information. Allow +/- 5mm tolerance for dimensions and setouts shown in product literature.

[britex.com.au](https://www.britex.com.au) | sales@britex.com.au | A.B.N 83 004 309 737

