

SURGEON'S SCRUB TROUGH

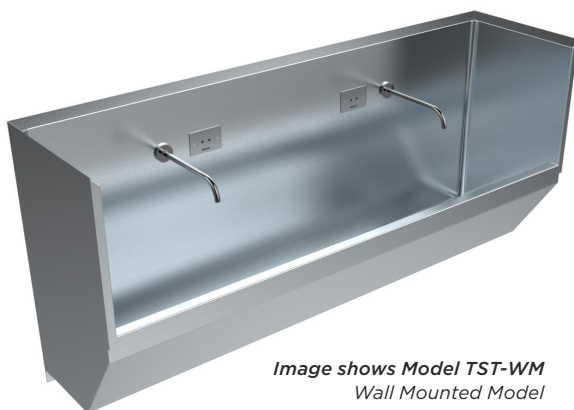
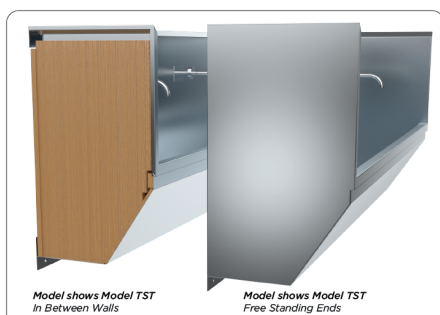


Image shows Model TST-WM
Wall Mounted Model



Model shows Model TST
In Between Walls

Model shows Model TST
Free Standing Ends



Image shows Model TST-FM
Floor Mounted Model

(Taps shown for indicative purposes only)

features and benefits

- Used in Australia's finest hospitals
- Suits scrub up procedure
- Double skinned, robust construction
- Grade 304 or 316 acid resistant S.S.
- Left or right hand waste position
- Fully welded internal surfaces for a seamless, hygienic finish
- 50mm waste supplied
- Radius internal corners - easy cleaning
- Made to custom lengths
- Optional sensor or lever tapware
- Optional support frame & storage under
- Optional splashback orientation
- Supplied with wall fixings

about

BRITEK Stainless Steel Surgeon's Scrub Troughs are found in many of Australia's finest hospitals and medical facilities. Designed specifically to suit the requirements of scrub up procedures, they are 'double skinned' with 1.2mm grade 304 or grade 316 acid resisting stainless steel to ensure optimal hygiene standards. Upstands can be supplied to each end when between walls, or with upstand to rear only. All Scrub Troughs are custom made to length as required with outlets available at either left or right hand end. Additional options include sensor activated tapware and a support frame underneath with removable access panels for storage and maintenance.

sample spec. text

BRITEK grade 304/316 S.S. Surgeon's Scrub Trough - XXXXL x 470W. Double-skinned construction with 18mm HMR bonded substrate, high splashback to rear and sides, complete with SHS support frame under wall fixings and left/right hand 50mm waste outlet. To be installed freestanding/between walls - Product Code TST-XX

*RED TEXT may denote a variable where one option only is to be selected, a nominal dimension that needs to be specified, or an optional feature that can be removed if not required. Please refer to the back of this page for additional specification details and options.

VISIT BRITEX.COM.AU TO DOWNLOAD BIM FILES, CAD DRAWINGS AND THE MOST CURRENT PRODUCT LITERATURE.



MELBOURNE
Britex Place, Mirra Crt
Bundoora VIC 3083
t (03) 9466 9000
f (03) 9466 9044

SYDNEY
16 Northumberland Drv
Taren Point NSW 2229
t (02) 9531 2100
f (02) 9531 2800

PERTH
Unit 1/8 Principal Link
Malaga WA 6090
t (08) 9249 5464
f (08) 9248 6893

BRISBANE
19 Manilla St
East Brisbane QLD 4169
t (07) 3363 2400
f (07) 3363 2444

ADELAIDE
The Britex Group
SA State Office
t 1300 764 744
f 1300 784 306

britex.com.au | sales@britex.com.au | A.B.N 83 004 309 737

SURGEON'S SCRUB TROUGH

PRODUCT CODE

TST-WM Wall Mounted

TST-FM Floor Mounted

(Supplied with support frame under and removable front panels)

HOW TO SPECIFY: Surgeon's Scrub Trough

Sample Specification Code

A **B** **C** **D** **E** **F**
TST - 1800 - FM - 304 - RO - R

= Surgeon's Scrub Trough, Floor Mounted, Grade 304 S.S. 1800mm long with Splashback to Rear Only, Right Hand Waste

Specification Key

A = Product Code

B = Trough Length (mm)

C = Mounting Options

FM : Floor Mount (supplied with removable access panels and support frame)
WM : Wall Mount

D = Grade of Stainless

304 : Commercial Grade
316 : Acid Resistant Grade

E = Splashback Options

RO : Rear Only

RE : Rear and Both Ends

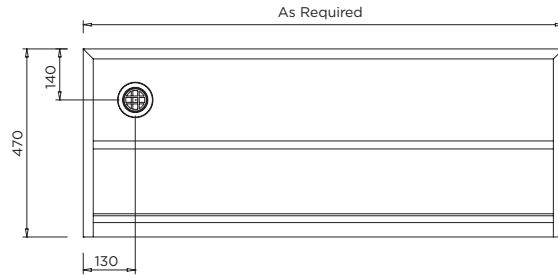
RL : Rear and Left End

RR : Rear and Right End

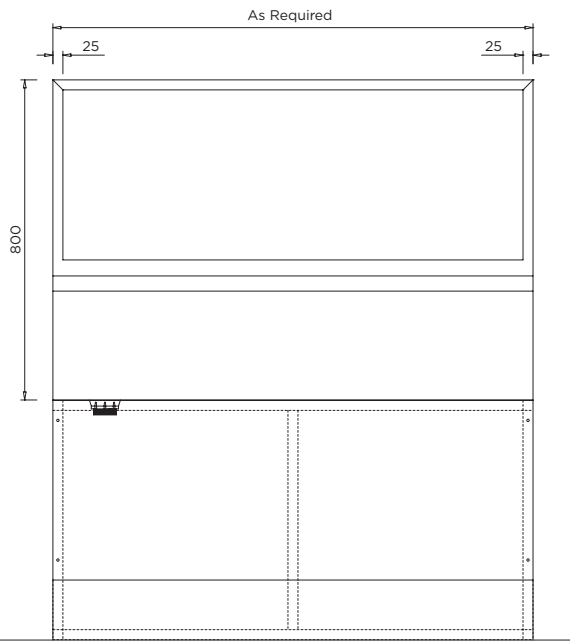
F = Waste Outlet Position

L : Left Hand Waste

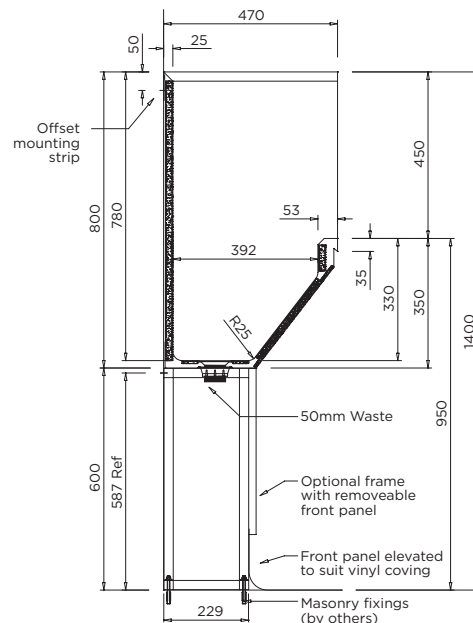
R : Right Hand Waste



MODEL TST-WM/TST-FM Plan



MODEL TST-FM Front Elevation



MODEL TST-FM Section

When specifying this product please include:

specifying guide

- Product **Name** and **Code**
- Product **Dimensions**
- **Grade** and **Thickness** of S.S.
- **Tapware** details (if required)
- Position of **Waste Outlet** (left/right)
- **End Type** - between walls or freestanding

options

- Available in custom sizes
- Tapware - see Tapware Section: 11
- Floor Mounted or Wall Mounted
- 1.2mm or 1.6mm S.S.
- 304 or 316 grade S.S.
- Left or right hand waste

VISIT BRITEX.COM.AU TO DOWNLOAD BIM FILES, CAD DRAWINGS AND THE MOST CURRENT PRODUCT LITERATURE.

Last Revised Mar 2023



Due to ongoing research and our commitment to product development, details are subject to change without notice. Details accurate at time of print. Please refer to britex.com.au for the most current product information. Allow +/- 5mm tolerance for dimensions and setouts shown in product literature.

britex.com.au | sales@britex.com.au | A.B.N 83 004 309 737

