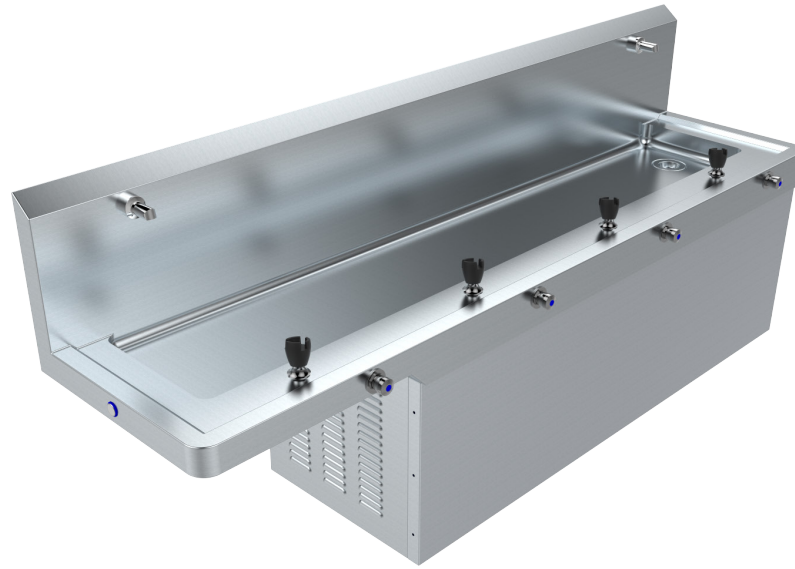


# ACCESSIBLE DRINKING TROUGH

## REFRIGERATED



Most common configuration illustrated (2000mm)

### features and benefits

- Drink Safe™ low lead WaterMark & WELS approved tapware
- Optional One or two bottle fillers at either or both ends for easy filling with piezo activation
- Piezo activated and hygiene rinse every 24 hours that provides reassurance of stagnated supply of water
- Pre-plumbed
- Bacteria and sunlight resistant bubblers with rubber compound mouthguards
- Standard and accessible access stations to comply with AS1428
- Radius corners for easy cleaning and added safety
- 50mm waste
- Available in refrigerated model
- Ideal for schools and community centres

### about

The BRITEX Refrigerated Accessible Drinking Trough is particularly suited to school and university projects. The AS1428 complaint Drinking Troughs include pre-plumbed Drink Safe™ low lead water efficient push button drink bubblers with bacteria and sunlight resistant rubber compound mouth pieces for added safety in the event users are bumped whilst drinking. The fully welded stainless steel troughs, rounded corners both internally and externally ensure easy cleaning and provide added safety in high traffic areas. Accessible drinking stations can be supplied at either the left- or right-hand end.

### sample spec. text

*BRITEX Accessible Refrigerated Drinking Trough - XXXXL x 500W x 100D Complete with X No. Drink Safe™ low lead pre-plumbed push button bubblers with safety rubber mouth pieces. 300mm high splashback to rear. With 1 or 2 Wall/Hob Mounted Bottle Filler Left/Right hand end to be AS1428 compliant - Product Code TP6R*

\*RED TEXT may denote a **variable** where one option only is to be selected, a **nominal dimension** that needs to be specified, or an **optional feature** that can be removed if not required. Please refer to the back of this page for additional specification details and options.

VISIT [BRITEX.COM.AU](http://BRITEX.COM.AU) TO DOWNLOAD BIM FILES, CAD DRAWINGS AND THE MOST CURRENT PRODUCT LITERATURE.



**MELBOURNE**  
Britex Place, Mirra Crt  
Bundoora VIC 3083  
t (03) 9466 9000  
f (03) 9466 9044

**SYDNEY**  
16 Northumberland Drv  
Taren Point NSW 2229  
t (02) 9531 2100  
f (02) 9531 2800

**PERTH**  
Unit 1/8 Principal Link  
Malaga WA 6090  
t (08) 9249 5464  
f (08) 9248 6893

**BRISBANE**  
19 Manilla St  
East Brisbane QLD 4169  
t (07) 3363 2400  
f (07) 3363 2444

**ADELAIDE**  
The Britex Group  
SA State Office  
t 1300 764 744  
f 1300 784 306

[britex.com.au](http://britex.com.au) | [sales@britex.com.au](mailto:sales@britex.com.au) | A.B.N 83 004 309 737

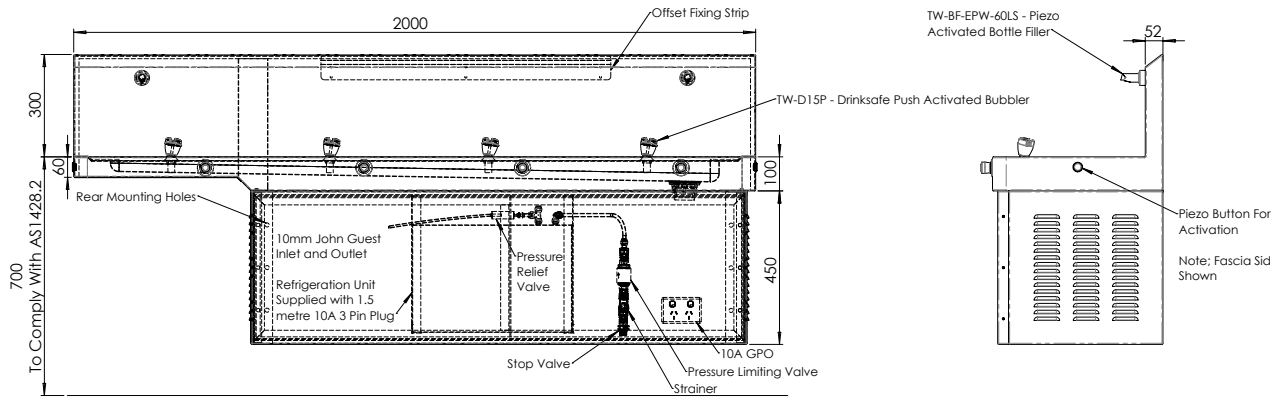
# ACCESSIBLE DRINKING TROUGH

## REFRIGERATED

PRODUCT CODE

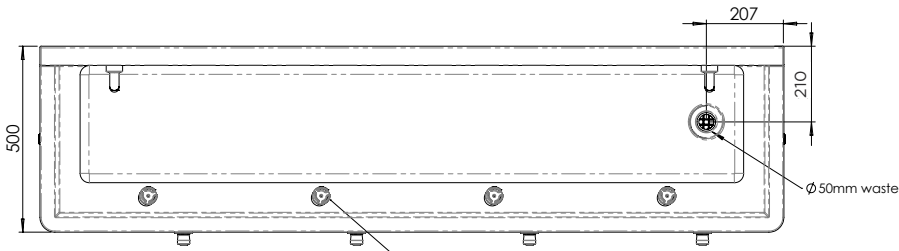
# TP6R

TROUGHS



MODEL TP6 Front Elevation

MODEL TP6 Side Elevation



MODEL TP6 Plan

### Common Trough and Tap Combinations:

4 bubblers - 2 bottle Fillers -2000mm

### Refrigeration Unit Specs:

- 1/2" M&F BSP connection (supplied)
- Stop valve with 1/2 Female BSP required (not supplied)
- Recommended fitting of dual action filter (not supplied)
- 1.5 metre 3 pin plug (supplied)
- Min. working pressure = 200kPa
- Max. working pressure = 500kPa
- Water Temp: Factory set to 10°C

When specifying this product please include:



- Product Name and Code
- Product Dimensions
- Access End (left or right)
- No. of Bubblers
- No. of Bottle Fillers



- Stainless Steel Tapware - Refer TP6R-SS
- Custom sizes available
- Accessible access (left- or right-hand side)
- Wall Bottle fillers (300mm Upstand)

VISIT [BRITEX.COM.AU](http://BRITEX.COM.AU) TO DOWNLOAD BIM FILES, CAD DRAWINGS AND THE MOST CURRENT PRODUCT LITERATURE.

Last Revised 2022



Due to ongoing research and our commitment to product development, details are subject to change without notice. Details accurate at time of print. Please refer to [britex.com.au](http://britex.com.au) for the most current product information. Allow +/- 5mm tolerance for dimensions and setouts shown in product literature.



[britex.com.au](http://britex.com.au) | [sales@britex.com.au](mailto:sales@britex.com.au) | A.B.N 83 004 309 737

Quality ISO 9001

#TP6R / REFRIGERATED ACCESSIBLE DRINKING TROUGH