



features and benefits

- Economical trough with hob for tapware
- Commercial grade 304 S.S.
- Fully welded construction
- Made to custom lengths
- 50mm waste & wall brackets supplied
- Left or right hand waste position
- Suited to workshops, public amenities and portable buildings

about

The *BRITEK Stainless Steel Pattern Trough No. 4* is an economical, square cornered trough that incorporates a rear hob for mounting hand wash taps. Suitable for use in light commercial projects and public amenities. Made from 1.2mm grade 304 stainless steel and possessing square external corners it is available in custom lengths with either left or right hand waste position. Troughs are supplied with heavy duty wall brackets and front legs are available if additional support is required.

sample spec. text

BRITEK 1.2mm grade 304 S.S. Pattern No.4 Trough - XXXXL x 390W x 150D. Complete with 80mm rear hob, left/right hand waste outlet and wall mounting brackets - Product Code TP4

*RED TEXT may denote a **variable** where one option only is to be selected, a **nominal dimension** that needs to be specified, or an **optional feature** that can be removed if not required. Please refer to the back of this page for additional specification details and options.

VISIT BRITEX.COM.AU TO DOWNLOAD BIM FILES, CAD DRAWINGS AND THE MOST CURRENT PRODUCT LITERATURE.

PATTERN TROUGH NO.4

PRODUCT CODE

TP4

HOW TO SPECIFY: Pattern Trough No.4

Sample Specification Code

A **B** **C** **D** **E** **F**
TP4 - **1500** - **3** - **TW-9101** - **WB** - **R**

= Pattern Trough No. 4 with 3 Eco Timed Flow Pillar Taps,
 1500mm long, Brackets only, Right Hand Waste

Specification Key

A = Product Code

B = Trough Length (mm)

C = Tap Qty (if required)

D = Tap Code (if required)
 (see below for suggested
 tapware options)

E = Support Options

WB : Brackets only

BL : Brackets and Legs

F = Waste Outlet Position

L : Left Hand Waste

R : Right Hand Waste

Standard Trough and Tap Combinations:

1200mm - 3 taps
 2400mm - 6 taps

1500mm - 3 taps

1800mm - 4 taps

Suggested Tapware:

(see Tapware Section: 11 for complete range of options)



TW-9102
 Eco Timed Flow Wash
 Safe Pillar Tap



TW-LBSET-09
 Laboratory Tap Set 9



TW-SET-02
 Basin Mounted Tap Set



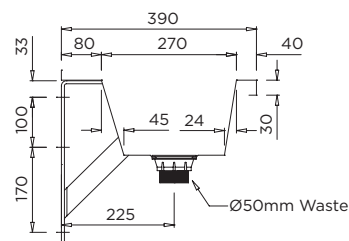
TW-MIX-01
 Basin Mounted Flick Mixer



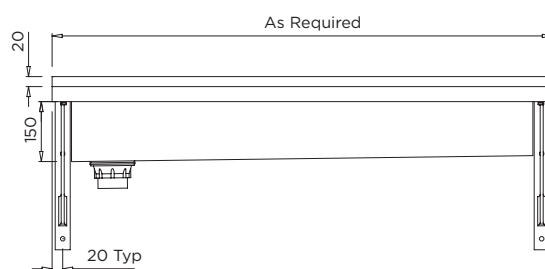
TW-0020
 Vandal Resistant DPW
 (NSW) Deluxe Pillar Tap



TW-9110
 Euro Basin Mounted
 Sensor Tap

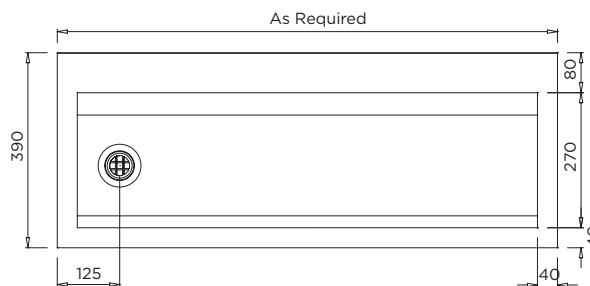


MODEL TP4 Section



Troughs over 2000mm long are supplied with a centre support bracket

MODEL TP4 Front Elevation



MODEL TP4 Plan

*When specifying this
 product please include:*

- Product Name and Code
- Product Dimensions
- Position of Waste Outlet (left/right)

specifying
 guide

options

- Pre-Plumbed with tapware
- Tap holes
- Support legs
- Custom trough dimensions
- Left or right hand waste

VISIT BRITEX.COM.AU TO DOWNLOAD BIM FILES, CAD DRAWINGS AND THE MOST CURRENT PRODUCT LITERATURE.

Last Revised Jun 2023