

Scan QR code
to view online



features and benefits

- Anti-splash design
- Commercial grade 304 S.S.
- Fully welded construction
- Made to custom lengths
- Optional Tapware
- 50mm waste & wall brackets supplied
- Left or right hand waste position
- Suited to workshops, public amenities and portable buildings

about

The *BRITEX Stainless Steel Pattern Trough No.2* is an economy model suitable for high use areas and incorporates an angled front face to reduce splashing when in use. A 100mm upstand to the rear allows taps to be mounted on an easy to clean surface. Troughs are supplied with heavy duty wall brackets and front legs are available if additional support is required. Made from 1.2mm grade 304 stainless steel and possessing square external corners it is available in custom lengths with either left or right hand waste position.

sample spec. text

BRITEX 1.2mm grade 304 S.S. Pattern No.2 Trough - XXXXL x 390W x 150D. Complete with left/right hand 50mm waste outlet and wall mounting brackets - Product Code TP2

NB Please refer to reverse page for tapware and trough options

*RED TEXT may denote a **variable** where one option only is to be selected, a **nominal dimension** that needs to be specified, or an **optional feature** that can be removed if not required. Please refer to the back of this page for additional specification details and options.

VISIT BRITEX.COM.AU TO DOWNLOAD BIM FILES, CAD DRAWINGS AND THE MOST CURRENT PRODUCT LITERATURE.

PATTERN TROUGH NO.2

PRODUCT CODE

TP2

HOW TO SPECIFY: Pattern Trough No.2

Sample Specification Code

A **B** **C** **D** **E** **F**
TP2 - 3 - TW-9104 - 1500 - WB - R

= Pattern Trough No. 2 with 3 Timed Flow Bib Taps, 1500mm long, Brackets only, Right Hand Waste

Specification Key

A = Product Code

B = Tap Qty (if required)

C = Tap Code (if required)
 (see below for suggested tapware options)

D = Trough Length (mm)

E = Support Options

WB : Brackets only

BL : Brackets and Legs

F = Waste Outlet Position

L : Left Hand Waste

R : Right Hand Waste

Standard Trough and Tap Combinations:

1200mm - 3 taps
 2400mm - 6 taps

1500mm - 3 taps

1800mm - 4 taps

Suggested Tapware:

(see Tapware Section: 11 for complete range of options)



TW-9104
Timed Flow Bib Tap



TW-9203
Deluxe Timed Flow Bib Tap



TW-0007
Top Activated Timed Flow Bib Tap



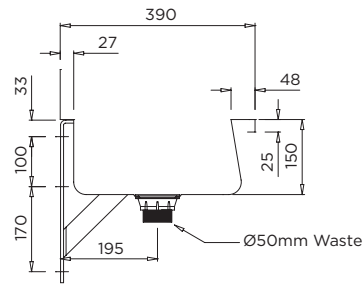
TW-SET-01
Wall Mounted Tap Set



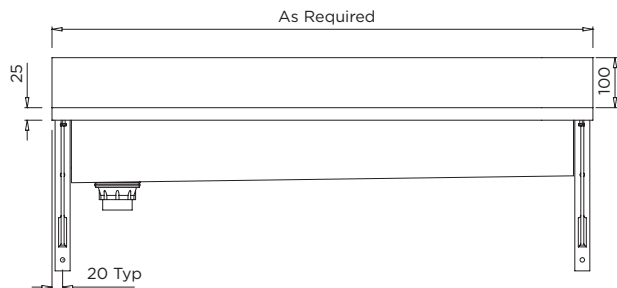
TW-0048
Top Lever Timed Flow Bib Tap



TW-9106
Front Lever Timed Flow Bib Tap

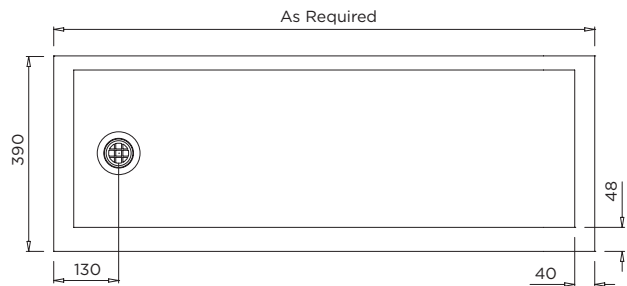


MODEL TP2 Section



Troughs over 2000mm long are supplied with a centre support bracket

MODEL TP2 Front Elevation



MODEL TP2 Plan

When specifying this product please include:

- Product **Name** and **Code**
- Product **Dimensions**
- **Tapware** details (if required)
- Position of **Waste Outlet** (left/right)

specifying guide

options

- Tile lip to side walls
- Tap holes
- Support legs
- Custom trough dimensions
- Left or right hand waste

VISIT BRITEX.COM.AU TO DOWNLOAD BIM FILES, CAD DRAWINGS AND THE MOST CURRENT PRODUCT LITERATURE.