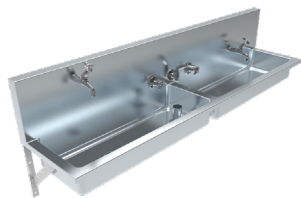


Wall Mounted Clay & Ablution



TCA-PPC TCA-PPCH

Scan QR code
to view our
installation notes



To order this item please advise:

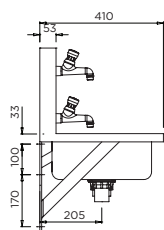
- Product Code:
TCA-PPC (Supplied with cold taps
e.g. primary schools)
TCA-PPCH (Supplied with hot and
cold taps e.g. secondary schools)
- Tap quantity and code (if required)

Product Info:

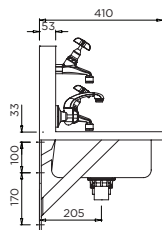
- Multipurpose trough for art / ceramic rooms
- Separate bowls for hand washing and utensil cleaning
- Utensil cleaning bowl incorporates riser waste
- Rear hob for concealing tapware connections
- Wall brackets and waste outlets supplied
- Available with tapware (see Tapware section)

Suggested Mounting Heights (mm)

| | infant | primary | secondary |
|------|--------|---------|-----------|
| wash | 550 | 650 | 700 |



TCA-PPC



TCA-PPCH

INSTALLATION NOTES

- 1) Fixture strength is ultimately determined by the load capacity of the supporting structure (noggins recommended for stud wall construction) and use of appropriate fixings (i.e. sleeve anchors for masonry walls).
- 2) Trough is mounted to wall via two end brackets (inserted into end fascias of trough) and an offset bracket positioned at the rear of the splashback.
- 3) Front support legs supplied only by specific request.
- 4) Troughs can be supplied with multiple tap styles where required.
- 5) Tapware connections should be housed within the cavity in the trough splashback.

Suggested Tapware: TCA-PPC

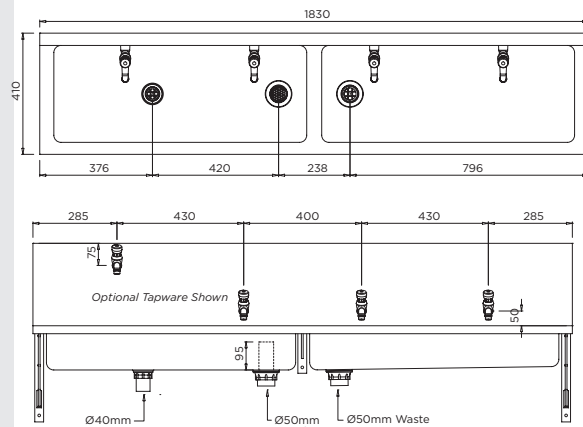


TW-0007
Top Activated
Timed Flow
Bib Tap

or



TW-9104
Timed Flow
Bib Tap



TCA-PPC

Suggested Tapware: TCA-PPCH

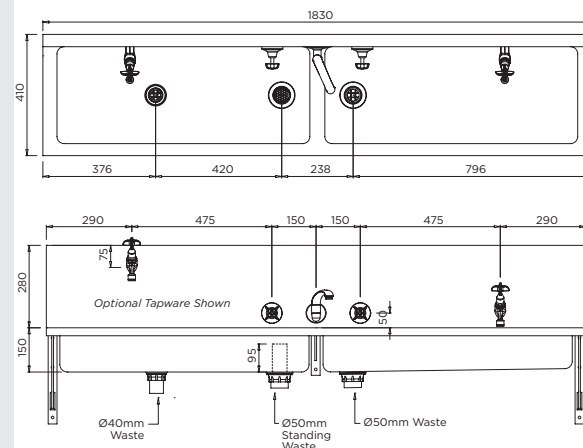


TW-0008
Vandal Resistant
Deluxe Bib Tap

and



TW-SET-04
Wall Sink Set
with Upswept
Swivel Spout



TCA-PPCH