

SECURITY STAINLESS STEEL MIRROR

WASHROOM ACCESSORIES

#SMIR / SECURITY STAINLESS STEEL MIRROR



features and benefits

- Anti-ligature fixtures
- Rear mounting points
- Security, smash-resistant mirrors
- Grade 304 stainless steel
- Heavy duty construction
- Ideal for prisons, police stations and detention centres

about

The BRITEX Security Stainless Steel Mirror is manufactured from premium quality #8 True Mirror finish stainless steel, offering optimal durability made to withstand even the toughest conditions with no shatter, crack or craze. Ideal for public amenity and security projects. The mirror is bonded to MR substrate to ensure the mirrored surface remains flat. Available with a concealed fixing bracket or front fixings (4 x front fixing holes). Custom designs are available by request.

sample spec. text

Britex Stainless Steel Security Mirror XXXmm x XXXmm, supplied with front fixings/hidden fixings - Product Code SMIR-XXXX-XX

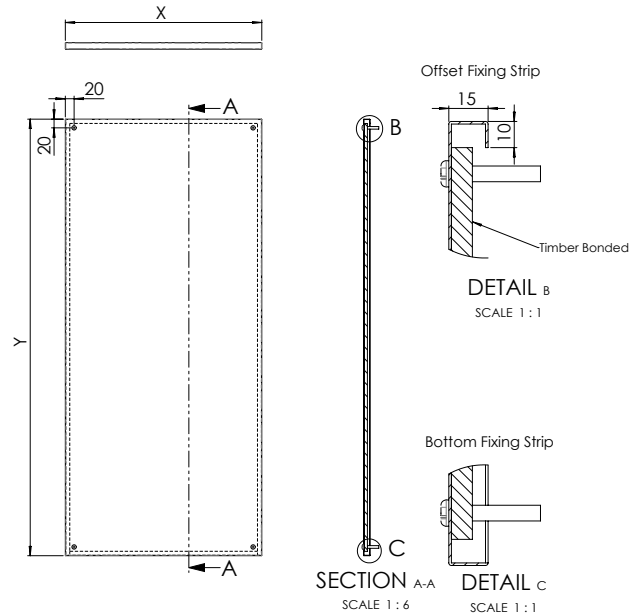
*RED TEXT may denote a variable where one option only is to be selected, a nominal dimension that needs to be specified, or an optional feature that can be removed if not required. Please refer to the back of this page for additional specification details and options.

VISIT BRITEX.COM.AU TO DOWNLOAD BIM FILES, CAD DRAWINGS AND THE MOST CURRENT PRODUCT LITERATURE.

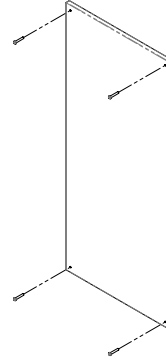
SECURITY STAINLESS STEEL MIRROR

PRODUCT CODE

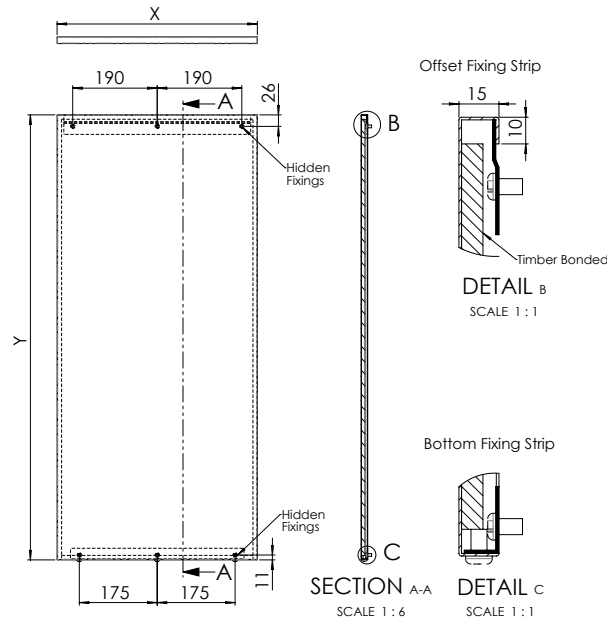
SMIR



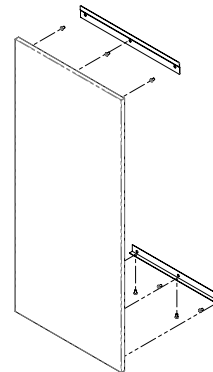
ITEM CODE	Dimension - X	Dimension - Y
SMIR-10045-FF (Accessible Compliant)	450mm	1000mm
SMIR-6050-FF	500mm	600mm
SMIR-10060-FF	600mm	1000m



MODEL SMIR-XXXX-FF Front Fixing



ITEM CODE	Dimension - X	Dimension - Y
SMIR-10045-HF (Accessible Compliant)	450mm	1000mm
SMIR-6050-HF	500mm	600mm
SMIR-10060-HF	600mm	1000m



MODEL SMIR-XXXX-HF Hidden Fixings



When specifying this product please include:

- Product **Name** and **Code**
- Product **Dimensions**
- **Front** or **Hidden Fixings**

VISIT BRITEX.COM.AU TO DOWNLOAD BIM FILES, CAD DRAWINGS AND THE MOST CURRENT PRODUCT LITERATURE.

Last Revised Mar 2023



Due to ongoing research and our commitment to product development, details are subject to change without notice. Details accurate at time of print. Please refer to britex.com.au for the most current product information. Allow +/- 5mm tolerance for dimensions and setouts shown in product literature.

britex.com.au | sales@britex.com.au | A.B.N 83 004 309 737

