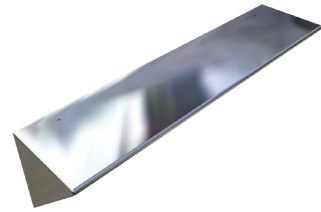


SSHE**Security Shelving**

Ligature and vandal resistant shelf ideal for correctional facilities and holding cells. Supplied with concealed fixings and radius front edge for added safety. Manufactured from heavy gauge, satin finish grade 304 stainless steel. Available in custom lengths as required.

SIZE W 400 x H 100 x D 100mm

**S.S. Shelf**

OVERALL SIZE H 105mm x D 128mm x **W**

BTX-10-010 W 300mm (W 200 x H 48mm C to C)

BTX-10-011 W 457mm (W 360 x H 48mm C to C)

BTX-10-012 W 610mm (W 510 x H 48mm C to C)

**S.S. Utility Hook Strip**

SIZE Plate & Hooks-H 232mm x D 78mm x **W**

BTX-10-015 W 660mm, 3 hooks (W 575mm C to C)

BTX-10-016 W 915mm, 4 hooks (W 830mm C to C)

BTX-10-017 W 1170mm, 5 hooks (W 1082mm C to C)

**S.S. Mop and Broom Racks**

SIZE Plate & Holders- Overall H 120mm x D 82mm x **W**

BTX-10-018 W 660mm, 3 holders

(6 Mounting Holes @ W290 x H108mm C to C)

BTX-10-019 W 914mm, 4 holders

(8 Mounting Holes @ W268 x H108mm C to C)

BTX-10-020 W 1168mm, 5 holders

(10 Mounting Holes @ W268 x H108mm C to C)

BTX-10-021 W 1422mm, 6 holders

(12 Mounting Holes @ W268 x H108mm C to C)



VISIT BRITEX.COM.AU TO DOWNLOAD BIM FILES, CAD DRAWINGS AND THE MOST CURRENT PRODUCT LITERATURE.