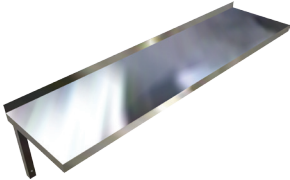


# Flat Sheet Shelf



## SHELF-S

Scan QR code  
to view our  
installation notes

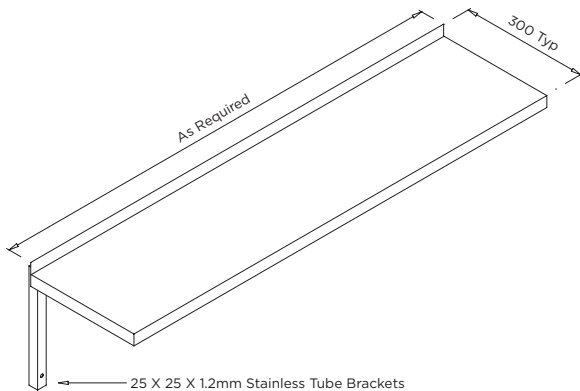


To order this item please advise:

- Shelf dimensions
- Grade of stainless: 304 or 316
- Upstand type: blade or sealed

Product Info:

- Made from grade 304 or 316 S.S.
- Fully customisable
- Supplied with stainless wall brackets
- Option of 'blade' or 'sealed' upstand



### INSTALLATION NOTES

1) Fixture strength is ultimately determined by the load capacity of the supporting structure and use of suitable fixings. 2) Shelf is supplied with heavy duty L-shaped 25x25mm SHS stainless tube wall brackets. 3) Brackets are then secured to underside of shelf with industrial adhesive tape or bonding material (not supplied). 4) A mechanical fixing for brackets to shelf can be supplied by special request. 5) Brackets are then secured to wall via two fixing holes in each bracket. 6) Fixings not supplied.

