

SECURITY COMBINATION UNIT



WELS REG#
please see
website for
complete list



Images show optional toilet roll holder
and optional security tapware.

features and benefits

- Grade 304 or 316 Satin Stainless Steel
- WELS and WaterMark certified
- Consistently specified for maximum security facilities Australia wide
- No ligature points
- Contraband-proof
- Concealed fixings
- Optional pan angle (90 or 35 degree)
- Space-saving design
- Optional integral toilet roll holder
- Security tapware/flusher options
- Ligature proof basin waste outlet
- 4.5/3 litre flushing compatible
- Centurion or Grandeur pans
- Suits detention facilities, pubs and public amenities

about

BRITEX Stainless Steel Security Combination Units are consistently selected by specifiers for prisons, holding cells and detention facilities that require optimal vandal resistance. They incorporate a fully welded stainless steel toilet pan and wash basin. The toilet pan has a contraband-proof flushing rim and one piece pressed bowl that provides water efficient flushing - 4.5/3 litre. A ligature-proof security waste is supplied with the basin and optional extras include security tapware, access panel and toilet pan flushing mechanism. Numerous fixing points are provided for fixing to the floor and rear wall. Available with either the Centurion (flat top) or Grandeur (integral pressed seat area) toilet pans that are WaterMark and WELS certified as required by plumbing regulations and government legislation.

sample spec. text

BRITEX S.S. Centurion/Grandeur Security Combination Unit - Grade 304/316 S.S. Incorporating security pan with 14mm safety radius front edge and oval basin with safety radius front edge and 40mm security waste outlet. Supplied complete with security tapware, code XXXX and integral recessed toilet roll holder. Pan to be at 90/35 degree angle. 4 WELS rating and WaterMark certified - Product Code SCU*

*RED TEXT may denote a variable where one option only is to be selected, a nominal dimension that needs to be specified, or an optional feature that can be removed if not required. Please refer to the back of this page for additional specification details and options.

VISIT BRITEX.COM.AU TO DOWNLOAD BIM FILES, CAD DRAWINGS AND THE MOST CURRENT PRODUCT LITERATURE.



MELBOURNE
Britex Place, Mirra Crt
Bundoora VIC 3083
t (03) 9466 9000
e vic@britex.com.au

SYDNEY
16 Northumberland Drv
Taren Point NSW 2229
t (02) 9531 2100
e nsw@britex.com.au

PERTH
14 Capital Rd
Malaga WA 6090
t (08) 9249 5464
e wa@britex.com.au

BRISBANE
19 Manila St
East Brisbane QLD 4169
t (07) 3363 2400
e qld@britex.com.au

ADELAIDE
The Britex Group
SA State Office
t 1300 764 744
e sales@britex.com.au

britex.com.au | sales@britex.com.au | A.B.N 83 004 309 737

SECURITY COMBINATION UNIT

PRODUCT CODE

SCUC Centurion Pan

SCUG Grandeur Pan

HOW TO SPECIFY: Security Combination Unit

Sample Specification Code

A B C D E F
SCU - G - 35 - R - S - TW-SEC-01

= Security Combination Unit Grandeur Pan, 35 degree model, Right orientation, S Trap, complete with Security Set Tapware

Specification Key

A = Product Code

B = Pan Style

G : Grandeur Pan: p 2.01
C : Centurion Pan: p 2.03

C = Pan Angle

35 : 35 Degrees
90 : 90 Degrees

D = Pan Orientation

L : Left Hand Side
R : Right Hand Side

E = Trap Type

S : S Trap
P : P Trap

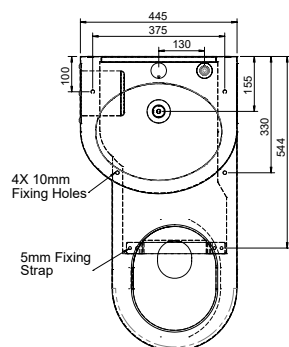
F = Tapware (optional)
(see Tapware Section: 11 for additional information)

Suggested Tapware Options:

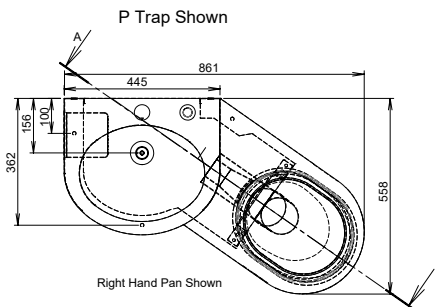
(see Tapware Section: 11 for complete range of options)



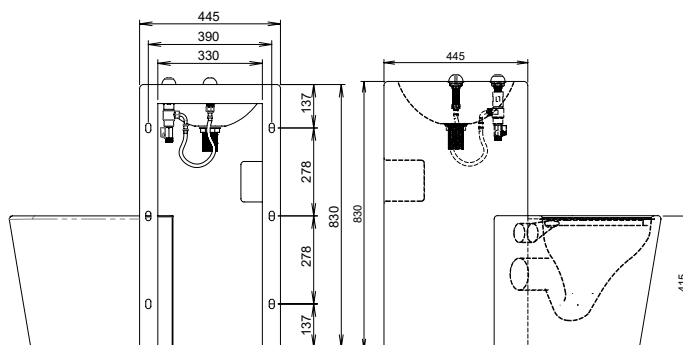
TW-SEC-01
Security Set
(Cold Only)



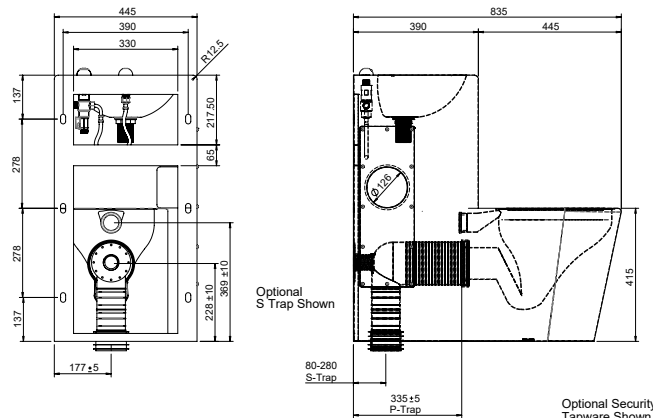
MODEL SCUC90 Plan (Right Hand Orientation)



MODEL SCUG35 Plan (Right Hand Orientation)



MODEL SCUG35 Rear Elevation and Side Elevation



MODEL SCUC90 Rear Elevation and Side Elevation



- Product **Name** and **Code**
- Product **Features** / **Options**
- **P** or **S** **Trap**



- Toilet Seat see p 2.18
- Britex Cistern - see Flushing Section: 3
- Integral Toilet Roll Holder
- Security Tapware - see Tapware Section: 11
- Left hand access panel

VISIT BRITEX.COM.AU TO DOWNLOAD BIM FILES, CAD DRAWINGS AND THE MOST CURRENT PRODUCT LITERATURE.

Last Revised Mar 2023 | Revision D/E