



Scan QR code
to view online



features and benefits

- Ultra vandal resistant
- Safety radius front edge
- Free of ligature points
- Concealed fixings
- Satin stainless finish
- Option for fitted toilet seat
- Option for permanently sealed access panels
- Suits public amenities

about

The *BRITEK Long Drop Pan* is seamless, fully shrouded and manufactured from heavy gauge grade 304 satin S.S. making it easy to clean and providing optimal strength. Generally used in remote areas, parks and gardens, and road side comfort stations, these pit toilet pans are manufactured to be vandal resistant and incorporate a large radius to the edge for safety and comfort. The internal chute is contoured to reduce soilage and maximise hygiene and features a parallel collar for the inclusion of a flexible pipe fitting if required. Access panels come standard to both sides of the pan for easy installation and a toilet seat can be fitted if required.

sample spec. text

BRITEK S.S. Long Drop Pan - 14mm safety radius front edge, fully shrouded to rear wall and 2 x access panels. Product Code PLD

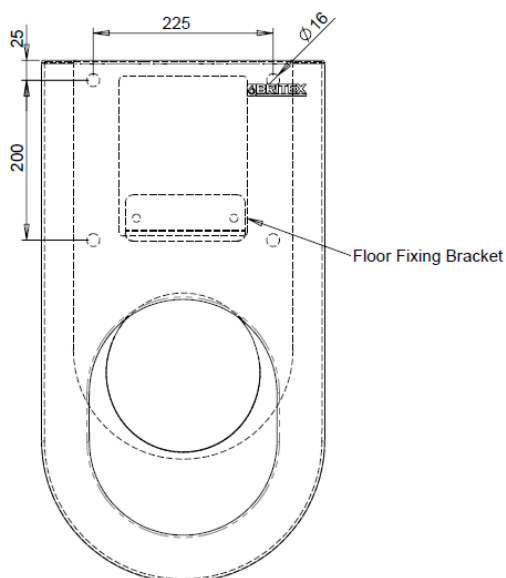
*RED TEXT may denote a **variable** where one option only is to be selected, a **nominal dimension** that needs to be specified, or an **optional feature** that can be removed if not required. Please refer to the back of this page for additional specification details and options.

VISIT BRITEX.COM.AU TO DOWNLOAD BIM FILES, CAD DRAWINGS AND THE MOST CURRENT PRODUCT LITERATURE.

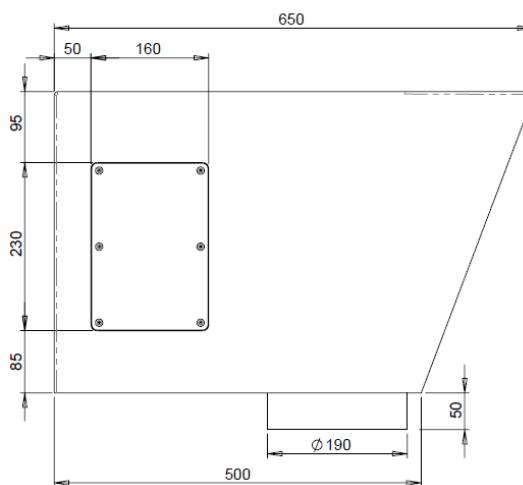
LONG DROP PAN

PRODUCT CODE

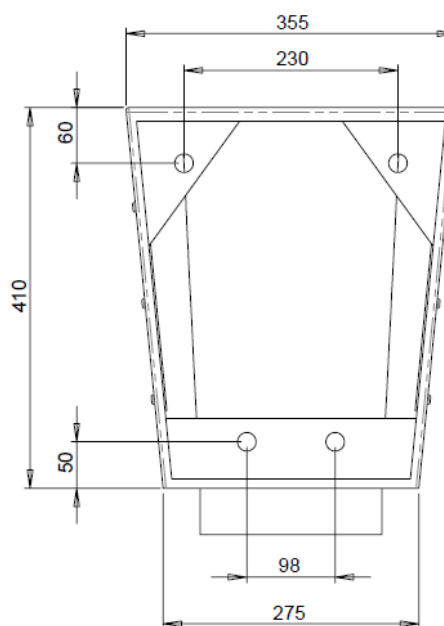
PLD



MODEL PLD Plan



MODEL PLD Side Elevation



MODEL PLD Rear Elevation

specifying
guide

When specifying this product please include:

- Product **Name** and **Code**
- Product **Dimensions**
- Product **Features / Options**
- **Seat Model** (if required)

options

- Toilet Seat see p 2.18
(Long Drop Pans are compatible with no lid toilet seats only)

VISIT BRITEX.COM.AU TO DOWNLOAD BIM FILES, CAD DRAWINGS AND THE MOST CURRENT PRODUCT LITERATURE.

Last Revised Feb 2023 | B