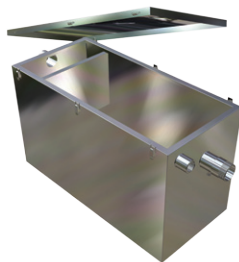


Solvent & Oil Interceptor

OSSO



Scan QR code
to view our
installation notes

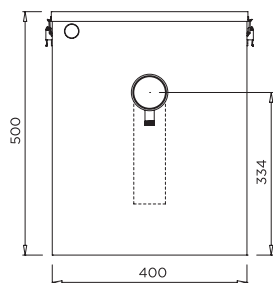


Product Info:

- Available in standard (100L) and custom sizes
- Quick release airtight lid sealed by internal gasket
- Outlet pipe fitted with sampling valve
- Optional base with castors
- Installed above ground
- Ideal for commercial kitchens

To order this item please advise:

- Required dimensions (and capacity)
- Grade of stainless - 304 or 316



INSTALLATION NOTES

1) Tank must be installed level to operate effectively. 2) If being installed under a bench top or permanent fixture, ensure enough space is provided to remove lid and gain access to inside of tank for cleaning. 3) Tank functions by allowing solvents/oils to separate and float to the top, whilst clean water settles at the bottom of the tank where it is drawn into the waste outlet and dispersed through the top end outlet connection.

Regular cleaning is recommended.

