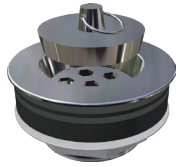
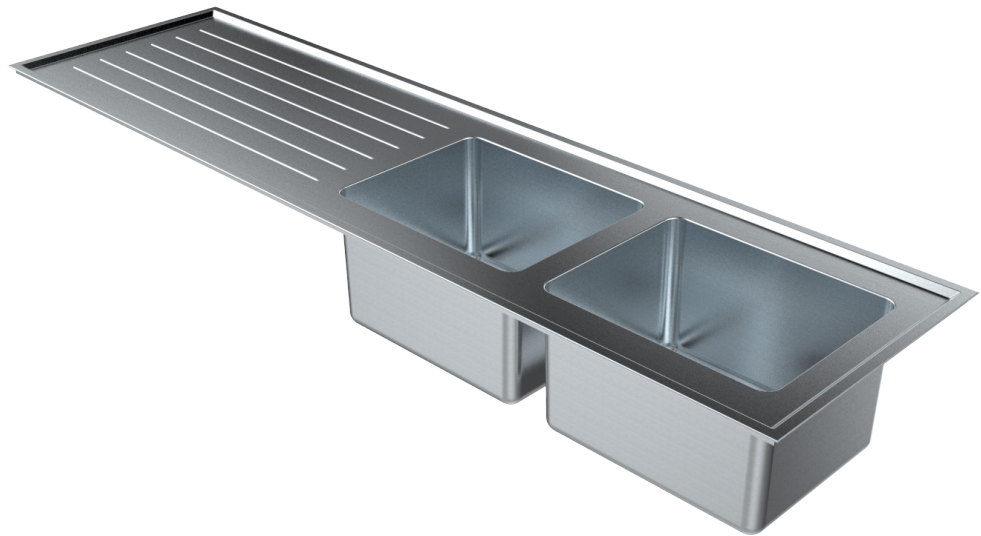


# 1500mm TWIN END BOWL

## UNIVERSAL LABORATORY SINK



Optional Acid Resistant  
Grade 316 Stainless Steel  
Waste Outlet (LSPW)



Scan QR code  
to view online



### features and benefits

- Standard Stocked Sizes
- Universal - can be used for both right and left hand applications
- Twin bowls, single drainer
- Optional WaterMark certified S.S. waste
- Will not crack or chip
- Corrugated drainer
- Radius internal bowl corners
- Grade 316 acid resistant S.S.
- 50mm centre waste
- 70mm hob to incorporate tapware
- Optional tapholes to suit specified tapware
- Suits school science rooms and laboratories

### about

*BRITEX Stainless Steel Twin End Bowl Universal Lab Sinks* are fabricated using 1.2mm grade 316 acid resistant stainless steel. Incorporating a uniquely Britex innovation, the Universal Sink Range possess 70mm hobs on either side of the bowl which allow them to be used in both right and left hand applications. They are supplied with 60mm spaced corrugated drainer and optional WaterMark certified grade 316 stainless steel waste outlet (LSPW). The Integrated twin bowls are 400L x 320W x 250D and radiused internal bowl corners ensure cleaning is easy. Tap holes can be supplied to suit specified tapware. Ideal for school science rooms and laboratories.

### sample spec. text

*BRITEX grade 316 S.S. 1500mm Twin End Bowl Universal Lab Sink - 1500L x 500W O/A. Bowl size 400L x 320W x 250D. Complete with corrugated drainer and 50mm WaterMark certified grade 316 S.S. waste outlet (LSPW) and XXXX tapware - Product Code LSTEB-S15-50*

\*RED TEXT may denote a **variable** where one option only is to be selected, a **nominal dimension** that needs to be specified, or an **optional feature** that can be removed if not required. Please refer to the back of this page for additional specification details and options.

VISIT [BRITEX.COM.AU](http://BRITEX.COM.AU) TO DOWNLOAD BIM FILES, CAD DRAWINGS AND THE MOST CURRENT PRODUCT LITERATURE.



**MELBOURNE**  
Britex Place, Mirra Crt  
Bundoora VIC 3083  
t (03) 9466 9000  
e vic@britex.com.au

**SYDNEY**  
16 Northumberland Drv  
Taren Point NSW 2229  
t (02) 9531 2100  
e nsw@britex.com.au

**PERTH**  
Unit 1/8 Principal Link  
Malaga WA 6090  
t (08) 9249 5464  
e wa@britex.com.au

**BRISBANE**  
19 Manila St  
East Brisbane QLD 4169  
t (07) 3363 2400  
e qld@britex.com.au

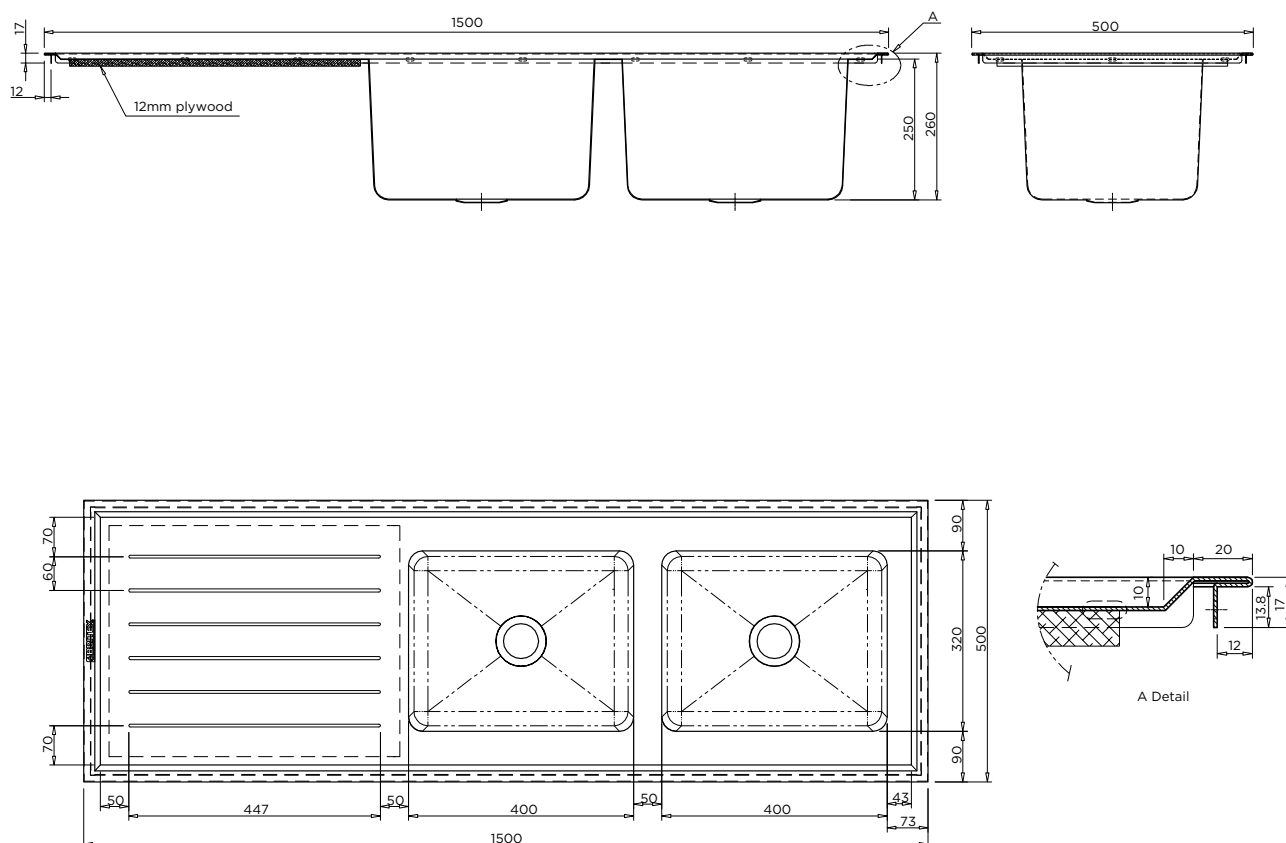
**ADELAIDE**  
The Britex Group  
SA State Office  
t 1300 764 744  
e sa@britex.com.au

[britex.com.au](http://britex.com.au) | [info@britex.com.au](mailto:info@britex.com.au) | A.B.N 83 004 309 737

# TWIN END BOWL

## UNIVERSAL LABORATORY SINK

PRODUCT CODE

**LSTEB-S15-50**specifying  
guide

- Product **Name** and **Code**
- Product **Features**
- Product **Dimensions**
- **Waste Outlet Type**  
(polypropylene or stainless steel)
- **Tapware** details (if required)

options

- Grade 316 S.S. Waste - LSPW: p 7.07
- Tapholes to suit
- Laboratory tapware

VISIT [BRITEX.COM.AU](http://BRITEX.COM.AU) TO DOWNLOAD BIM FILES, CAD DRAWINGS AND THE MOST CURRENT PRODUCT LITERATURE.

Last Revised 2019