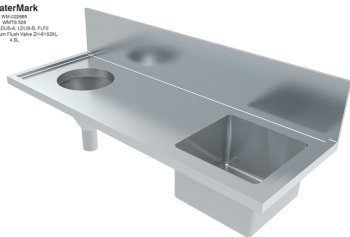




WaterMark
WSF-022665
WATS 526
(BRYTEK)LDUS-A, LDUS-B, FUF2
etch with Zum Flush Valve ZH-6151
4.81



LDUS-A
LDUS-B

To order this item please advise:

- Drainer style: Flat (LDUS-A) or Sloped (LDUS-B)
- Overall bench top dimensions
- Bowl size: 350mm Dia. or custom
- Flushing bowl waste: 100mm
- Grade of stainless: 304 or 316
- Splashback size: 300mm or custom
- Splashback orientation: rear only or rear and side(s)
- Tap hole details if required
- Wall mounting brackets
- Fixing angle for rear wall and front support legs
- Full, freestanding support frame (4 legs with bracing)

Product Info:

- Unit is supplied as standard to sit on joinery frame (by others).
- Integral flushing/sluice sink
- Choice of sloped or flat drainer
- Fully customisable to suit any application
- Wet-bead edge around bench top surface

Suggested Accessories:



TW-PRWM
Wall Mounted Dual Mixer Unit

INSTALLATION NOTES

1) Water connection for bowl is located below bench top. 2) Water supply to 25mm BSP connection on flushing bowl should be minimum 3/4" and 250kPa (500kPa max) to ensure bowl flushes solid waste adequately (1/2" for liquid waste only). 3) Where 100mm outlet is requested for flushing bowl, a 101mm OD stainless tube dropper waste is supplied for connection to trap as specified by consultant (not supplied). 4) 50mm waste supplied on standard bowl. 5) Stainless SHS tube wall mounting brackets or support frame/legs can be supplied where requested. 6) Suggested mounting height is 900mm AFL to front edge of sink.

