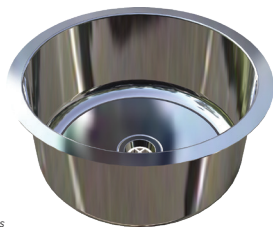


Round Laboratory Bowl

LBPB



Scan QR code
to view our
installation notes



To order this item please advise:

- Waste outlet type: stainless or poly

Product Info:

- Grade 316 stainless steel
- Acid resistant highly polished finish
- Optional WaterMark certified stainless waste (LSPW: pg 262)
- Kept in stock
- Can be top or under mounted
- Will not crack or chip

Suggested Tapware:

(see Tapware Section: 11 for complete range of options)



TW-LBSET-01A



TW-LBSET-04



TW-LBSET-06



TW-LBSET-08

INSTALLATION NOTES

1) Lab bowl is generally top mounted in a joinery bench. 2) Cut out for bowl is 290mm dia. which leaves a 20mm overhang around perimeter for mounting on bench top. 3) A silicon sealant or adhesive tape should be applied to the underside perimeter of flange for sealing and securing. 4) If under mounting, fixing holes will need to be pre-drilled in the bowl flange, silicon sealant applied, then screwed through to underside of substrate. 50mm polypropylene waste supplied standard. 5) Grade 316 stainless waste supplied only where requested.

