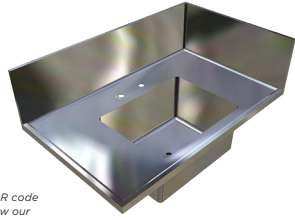


# Laboratory Corner Bench



## LAB-CNR

Scan QR code  
to view our  
installation notes

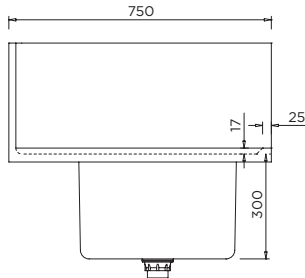


### To order this item please advise:

- Bench length
- Splashback height
- Waste type: polypropylene or stainless
- Installation type: on joinery/frame (by others) or wall mounted

### Product Info:

- Standard design for laboratory applications
- Made from 1.2mm grade 316 S.S.
- Melamine lined bench substrate
- Custom and standard lengths available
- Optional acid resistant stainless waste



## INSTALLATION NOTES

1) Fixture strength is ultimately determined by the load capacity of the supporting structure. 2) Bench is normally mounted on joinery or on a modular support frame (by others). 3) If bench is to be wall mounted, bench can be supplied with heavy duty L-shaped 32x32mm SHS stainless tube wall brackets. 4) Brackets are then secured to melamine lined timber substrate with screws (not supplied).

