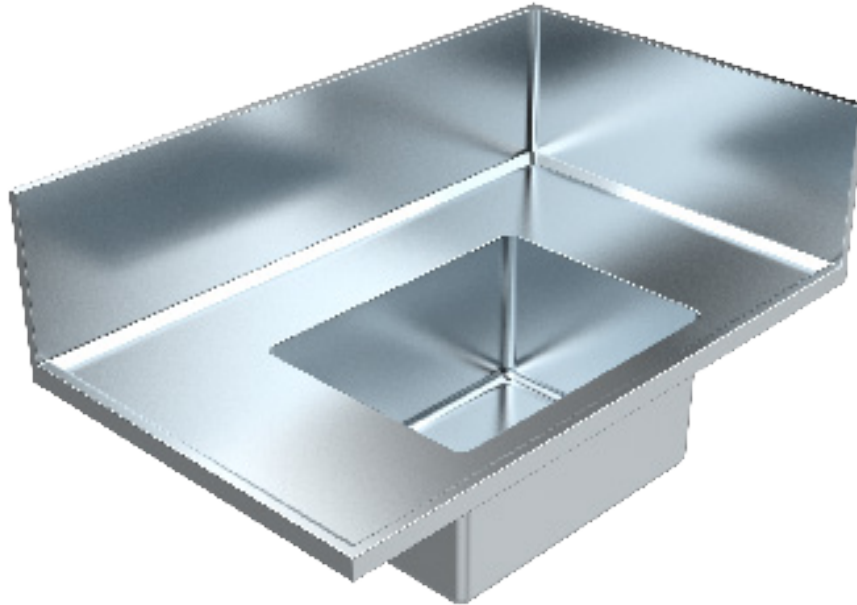


LABORATORY CORNER BENCH



Optional Acid Resistant
Grade 316 Stainless Steel
Waste Outlet (LSPW)



features and benefits

- Standard design for laboratory applications
- Made from 1.2mm grade 316 acid resistant S.S, no.4 satin finish
- Large integral bowl
- Fully welded seamless construction
- Rear upstand prevents splashing of dangerous substances onto wall surfaces
- Melamine lined bench substrate
- Standard and custom sizes available
- Optional stainless steel waste outlet - LSPW

about

The *BRITEX Stainless Steel Laboratory Corner Bench* can be found in many of Australia's finest laboratories and research facilities. Incorporating a large integral bowl and a unique, raised tap landing for optimum infection control and prevention of cross-contamination, the Laboratory Corner Bench is fully welded and can be made to dimensions if required from grade 316 acid resistant stainless steel or from standard grade 304 if not for laboratory application. Options include a grade 316 stainless steel waste outlet (LSPW) and support legs if not being installed on top of joinery.

sample spec. text

BRITEX Laboratory Corner Bench - 1.2mm grade 316 #4 finish S.S. 1200mm L x 750mm W O/A bonded to 18mm melamine lined MR substrate. Unit to incorporate 600 x 450 x 300 deep integral bowl with 50mm WaterMark certified S.S. waste (LSPW), 300mm high splashback to rear and left/right with 40mm wet bead fascia - Product Code LAB-CNR

*RED TEXT may denote a **variable** where one option only is to be selected, a **nominal dimension** that needs to be specified, or an **optional feature** that can be removed if not required. Please refer to the back of this page for additional specification details and options.

VISIT BRITEX.COM.AU TO DOWNLOAD BIM FILES, CAD DRAWINGS AND THE MOST CURRENT PRODUCT LITERATURE.



MELBOURNE
Britex Place, Mirra Crt
Bundoora VIC 3083
t (03) 9466 9000
f (03) 9466 9044

SYDNEY
16 Northumberland Drv
Taren Point NSW 2229
t (02) 9531 2100
f (02) 9531 2800

PERTH
Unit 1/8 Principal Link
Malaga WA 6090
t (08) 9249 5464
f (08) 9248 6893

BRISBANE
19 Manilla St
East Brisbane QLD 4169
t (07) 3363 2400
f (07) 3363 2444

ADELAIDE
The Britex Group
SA State Office
t 1300 764 744
f 1300 784 306

britex.com.au | sales@britex.com.au | A.B.N 83 004 309 737

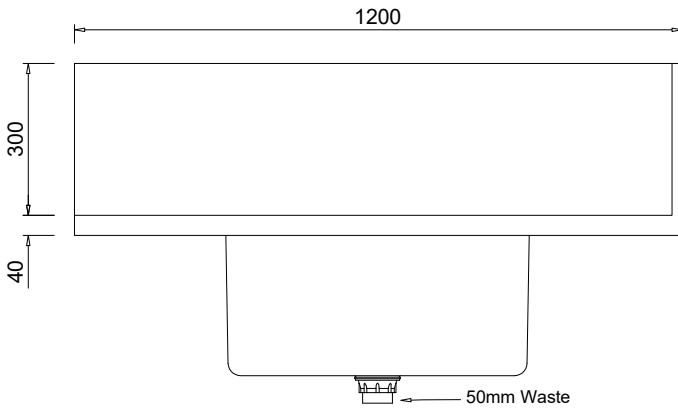
LABORATORY CORNER BENCH

PRODUCT CODE

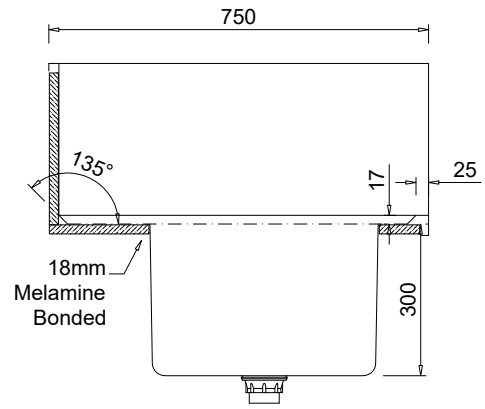
LAB-CNR

BENCHES & SHELVES

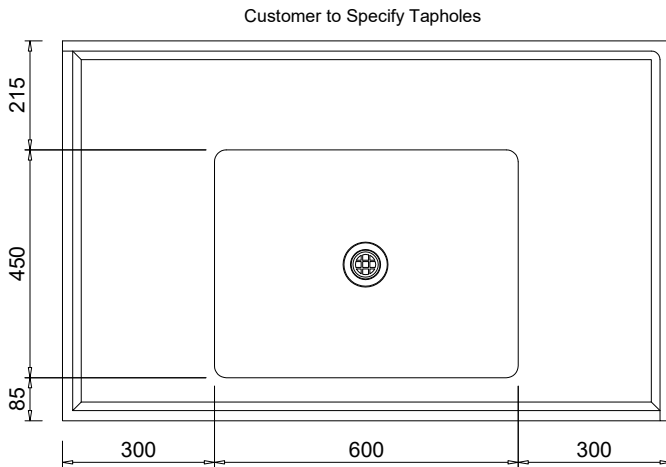
#LAB-CNR / LABORATORY CORNER BENCH



MODEL LAB-CNR Front Elevation



MODEL LAB-CNR Side Elevation



MODEL LAB-CNR Plan

Suggested Tapware:

(see Tapware Section: 11 for complete range of options)



TW-MT-50



TW-LBSET-04



TW-LBSET-06



TW-LBSET-08

specifying guide

When specifying this product please include:

- Product Name and Code.
- Product Dimensions
- Splashback height
- S.S. Grade & Thickness
- Upstand - left or right end
- Waste Outlet Type (polypropylene or stainless steel)

options

- 1.2, 1.6, 2.0mm stainless
- Stainless steel waste outlet - LSPW
- Double-skinned rear splashback
- Splashback to rear and side(s)
- Custom bowl size
- S.S. support frame under
- Custom bench sizes.

VISIT BRITEX.COM.AU TO DOWNLOAD BIM FILES, CAD DRAWINGS AND THE MOST CURRENT PRODUCT LITERATURE.

Last Revised Mar 2023 | Rev B



britex.com.au | sales@britex.com.au | A.B.N 83 004 309 737

Due to ongoing research and our commitment to product development, details are subject to change without notice. Details accurate at time of print. Please refer to britex.com.au for the most current product information. Allow +/- 5mm tolerance for dimensions and setouts shown in product literature.

