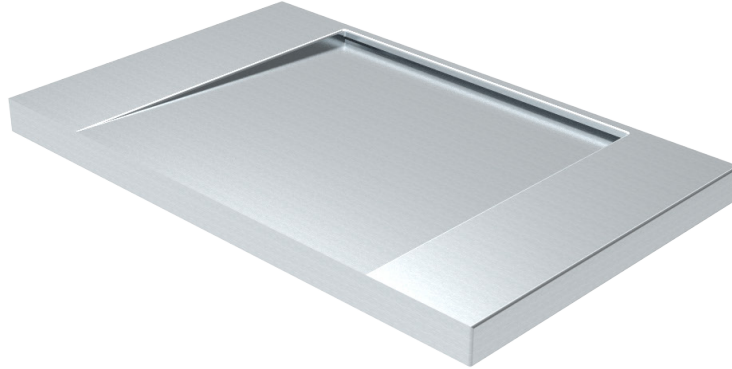


SINGLE WASH PLANE BASIN



features and benefits

- Modern linear profile
- Fully hand made, seamless design
- Grade 304 Satin Stainless finish
- 1.2mm Stainless Steel
- Available in 800mm Stations
- Custom lengths available
- Suited to wall mount tapware
- Minimalist style with vandal resistant durability
- Minimalist style - no plug or washer required
- Suited to modern washrooms in hotels, night clubs and restaurants.

about

The BRITEX *Single Wash Plane Basin* is a fully hand made linear style stainless steel wash basin. Manufactured from heavy gauge commercial grade stainless steel, the Single Wash Plane Basin embraces a minimalist design requiring no visible plug or washer. Available in a standard 800mm station or fabricated to custom lengths this unit is hard wearing and durable and is a perfect combination of timeless aesthetics and robust functionality. Optional wall mounted tapware available.

sample spec. text

BRITEX Stainless Steel Single Wash Plane Basin - **800 L** x 497 W x 47 D O/A - Product Code HBWP

*RED TEXT may denote a **variable** where one option only is to be selected, a **nominal dimension** that needs to be specified, or an **optional feature** that can be removed if not required. Please refer to the back of this page for additional specification details and options.

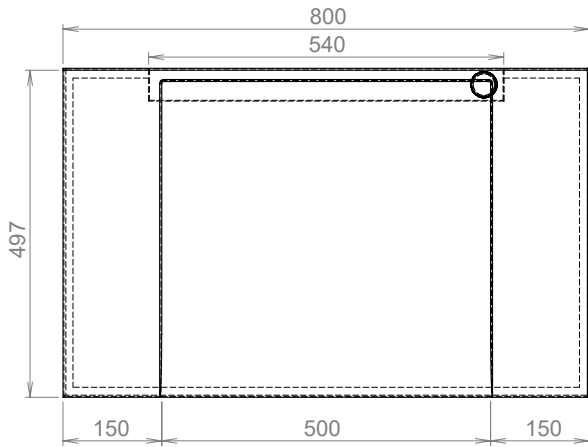
VISIT BRITEX.COM.AU TO DOWNLOAD BIM FILES, CAD DRAWINGS AND THE MOST CURRENT PRODUCT LITERATURE.

SINGLE WASH PLANE BASIN

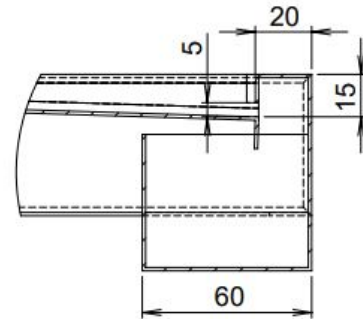
PRODUCT CODE

HBWP

BRITEX BATHROOMS

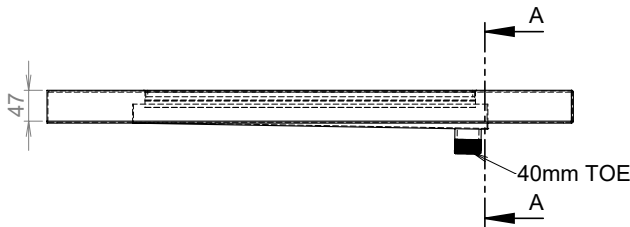


MODEL HBWP Plan View

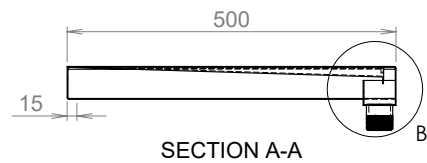


DETAIL B
SCALE 1 : 2

MODEL HBWP Waste Detail (B)



MODEL HBWP Section View



MODEL HBWP Section A-A Detail

specifying
guide

When specifying this product please include:

- Product Name and Code

options

- Custom Lengths
- Multi Wash Plane Basins available (see Product HBWMP)

VISIT BRITEX.COM.AU TO DOWNLOAD BIM FILES, CAD DRAWINGS AND THE MOST CURRENT PRODUCT LITERATURE.

Last Revised Feb 2023



Due to ongoing research and our commitment to product development, details are subject to change without notice. Details accurate at time of print. Please refer to britex.com.au for the most current product information. Allow +/- 5mm tolerance for dimensions and setouts shown in product literature.

britex.com.au | info@britex.com.au | A.B.N 83 004 309 737

