

WALL MOUNTED CORNER BASIN

6.12

HAND BASINS

#HBWC / WALL MOUNTED CORNER BASIN



Scan QR code
to view online



Image shows Model HBWC-TW-MIX-01

Wall Mounted Corner Basin with Hob Mounted Mixer Tap - Fixed Spout

features and benefits

- Space saving fixture
- Grade 304 Satin S.S.
- 50mm blade upstand
- 40mm waste & wall brackets supplied
- 26mm front fascia
- 6 litre bowl capacity
- 1 or 2 tap holes

about

The *BRITEX Stainless Steel Wall Mounted Corner Basin* is an economical hand basin, suitable for use in portable buildings, public amenities and commercial projects. Supplied complete with heavy duty wall bracket, 40mm waste outlet and tapware as required.

sample spec. text

*BRITEX S.S. Corner Basin - 360 x 360 x 100D. Supplied in satin finish, complete with 50mm blade rear upstand, mounting bracket, 40mm waste outlet and **XXXX tapware**. - Product Code HBWC-TW-XXXX*

NB Please refer to reverse page for tapware and basin options

***RED TEXT** may denote a **variable** where one option only is to be selected, a **nominal dimension** that needs to be specified, or an **optional feature** that can be removed if not required. Please refer to the back of this page for additional specification details and options.

VISIT BRITEX.COM.AU TO DOWNLOAD BIM FILES, CAD DRAWINGS AND THE MOST CURRENT PRODUCT LITERATURE.



MELBOURNE
Britex Place, Mirra Crt
Bundoora VIC 3083
t (03) 9466 9000
f (03) 9466 9044

SYDNEY
16 Northumberland Drv
Taren Point NSW 2229
t (02) 9531 2100
f (02) 9531 2800

PERTH
14 Capital Rd
Malaga WA 6090
t (08) 9249 5464
f (08) 9248 6893

BRISBANE
19 Manila St
East Brisbane QLD 4169
t (07) 3363 2400
f (07) 3363 2444

ADELAIDE
The Britex Group
SA State Office
t 1300 764 744
f 1300 784 306

britex.com.au | info@britex.com.au | A.B.N 83 004 309 737

WALL MOUNTED CORNER BASIN

PRODUCT CODE

HBWC Basin only

HOW TO SPECIFY: Wall Mounted Corner Basin

Sample Specification Code

A **B**
HBWC - TW-9204

= Wall Mounted Corner Basin with Deluxe Timed Flow Pillar Tap

Specification Key

A = Product Code

B = Tapware - if required
(see below for suggested tapware options)

Suggested Tapware Options:

(see Tapware Section: 11 for complete range of options)



TW-9204
Deluxe Timed Flow
Pillar Tap



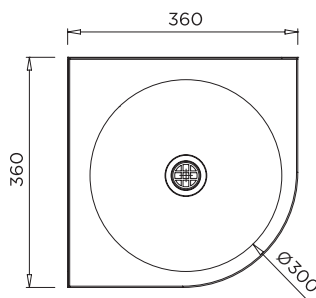
TW-9101
Eco Timed Flow
Pillar Tap



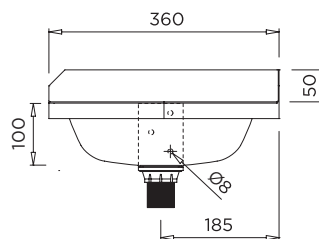
TW-9110
Euro Basin Mounted
Sensor Tap



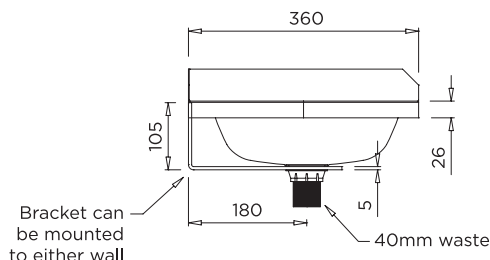
TW-MIX-01
Basin Mounted
Flick Mixer



MODEL HBWC Plan



MODEL HBWC Side Elevation



MODEL HBWC Rear Elevation

specifying
guide

When specifying this product please include:

- Product **Name** and **Code**
- Product **Dimensions**
- **Tapware** details (if required)

options

- Tap holes
- Splashback Panel - Up to 500mm High

VISIT BRITEX.COM.AU TO DOWNLOAD BIM FILES, CAD DRAWINGS AND THE MOST CURRENT PRODUCT LITERATURE.

Last Revised June 2017