

VANDAL RESISTANT CORNER HAND BASIN

6.05

HAND BASINS

#HBVRC / VANDAL RESISTANT CORNER HAND BASIN



*Image shows Model HBVRC-W-TW-9101
Wall Mounted Vandal Resistant Basin
with Eco Timed Flow Pillar Tap*

Scan QR code
to view online



*Image shows Model HBVRC-FF-TW-9101
Floor Mounted Vandal Resistant Basin, Front Fixed
with Eco Timed Flow Pillar Tap*

features and benefits

- Highly vandal resistant
- Pedestal and Wall Mounted models
- Great space-saving design
- Shroud conceals plumbing connections
- Front fix model includes access panel
- Choice of tapware styles
- Concealed fixings
- 40mm waste outlet supplied
- Suits public amenities, schools, sporting clubs and bars

about

The *BRITEX Stainless Steel Vandal Resistant Corner Hand Basin* is highly resistant to vandalism and is particularly suited to washrooms with limited space. Easily installed and fabricated from heavy duty stainless steel, all plumbing connections are housed within the carcass of the basin preventing them from being broken or tampered with. Available in both Pedestal (S trap) and Wall Mounted (P trap) configurations, front-fixed basins are supplied with an access panel, rear-fixed models without. Tap options include an anti-vandal timed flow pillar tap, sensor tap or dome shaped security tapware for maximum vandal resistance.

sample spec. text

HBVRC-W - Wall Mounted

BRITEX S.S. Vandal Resistant Corner Hand Basin - 360L x 360W x 350H. Wall mounted, front fixed, supplied complete with, 40mm waste outlet, concealed mounting bracket and XXXX tapware - Product Code HBVRC-W-TW-XXXX

HBVRC-F - Floor Mounted

BRITEX S.S. Vandal Resistant Corner Hand Basin - 360L x 360W x 850H. Floor mounted. Front/Rear fixed model. Supplied complete with 40mm waste outlet, concealed mounting bracket and XXXX tapware - Product Code HBVRC-F-XX-TW-XXXX

*RED TEXT may denote a **variable** where one option only is to be selected, a **nominal dimension** that needs to be specified, or an **optional feature** that can be removed if not required. Please refer to the back of this page for additional specification details and options.

VISIT BRITEX.COM.AU TO DOWNLOAD BIM FILES, CAD DRAWINGS AND THE MOST CURRENT PRODUCT LITERATURE.



MELBOURNE
Britex Place, Mirra Crt
Bundoora VIC 3083
t (03) 9466 9000
f (03) 9466 9044

SYDNEY
16 Northumberland Drv
Taren Point NSW 2229
t (02) 9531 2100
f (02) 9531 2800

PERTH
14 Capital Rd
Malaga WA 6090
t (08) 9249 5464
f (08) 9248 6893

BRISBANE
19 Manila St
East Brisbane QLD 4169
t (07) 3363 2400
f (07) 3363 2444

ADELAIDE
The Britex Group
SA State Office
t 1300 764 744
f 1300 784 306

britex.com.au | info@britex.com.au | A.B.N 83 004 309 737

VANDAL RESISTANT CORNER BASIN

PRODUCT CODE

HBVRC-W Wall Mounted

HBVRC-F Floor Mounted

HOW TO SPECIFY: Oval Security Basin

Sample Specification Code

A **B** **C**
HBVRC-F - RF - TW-9201

= Vandal Resistant Corner Basin Floor Mounted, Rear Fixed with Deluxe Timed Flow Pillar Tap

Specification Key

A = Product Code
HBVRC-W : Wall Mounted
HBVRC-F : Floor Mounted

C = Tapware - if required
 (see below for suggested tapware options)

B = Fixing Method
 (Floor Mount Model only)
RF : Rear Fixed
 (no access panel)
FF : Front Fixed
 (left hand access panel)

Suggested Tapware Options:

(see Tapware Section: 11 for complete range of options)



TW-9201
 Deluxe Timed Flow
 Pillar Tap



TW-9102
 Eco Timed Flow
 Pillar Tap



TW-9110
 Euro Basin Mounted
 Sensor Tap



TW-9103
 Timed Flow Lever
 Pillar Tap



TW-SEC-01
 Security Tap Set
 (Cold Only)



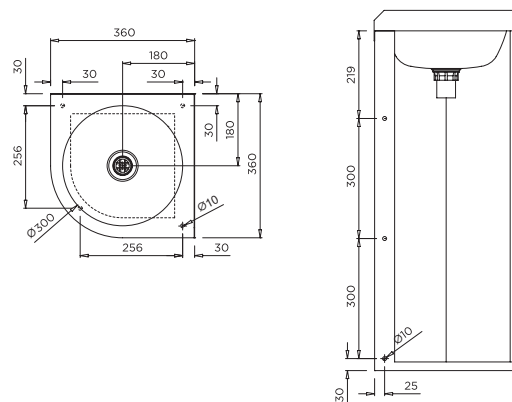
TW-MIX-01
 Basin Mounted
 Flick Mixer

When specifying this product please include:

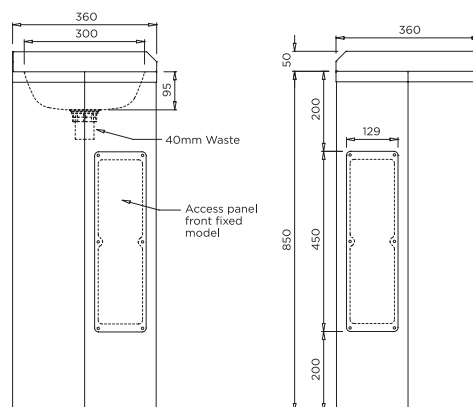
- Product **Name** and **Code**
- Product **Dimensions**
- **Tapware** details (if required)
- Fixing Method - **Front** or **Rear**

specifying
guide

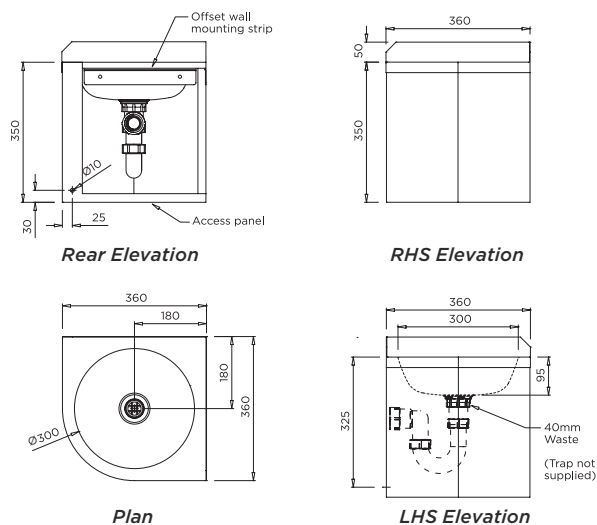
options



MODEL HBVRC-F Plan and Rear Elevation



MODEL HBVRC-F RHS and LHS Elevation



MODEL HBVRC-W Wall Mounted

VISIT BRITEX.COM.AU TO DOWNLOAD BIM FILES, CAD DRAWINGS AND THE MOST CURRENT PRODUCT LITERATURE.

Last Revised 2019