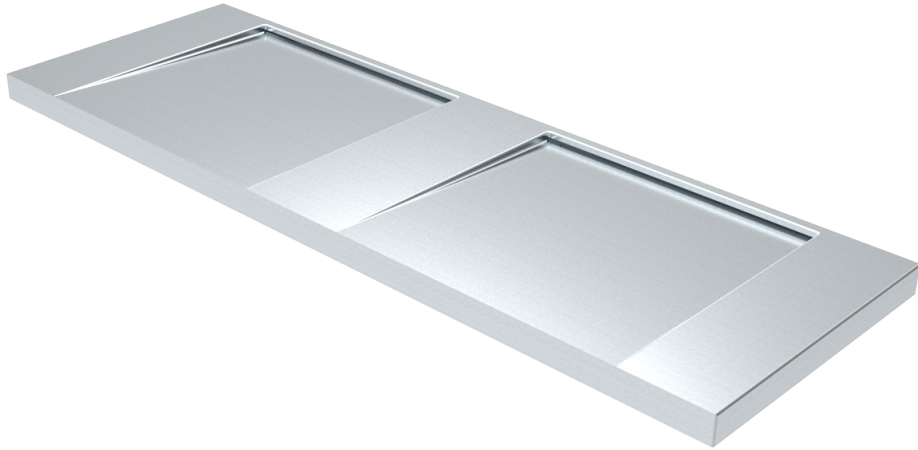


MULTI WASH PLANE BASIN



features and benefits

- Modern linear profile
- Fully hand made, seamless design
- Grade 304 Satin Stainless finish
- 1.2mm Stainless Steel
- 2, 3 or custom qty stations available
- Suited to wall mount tapware
- Minimalist style with vandal resistant durability
- Minimalist style - no plug or washer required
- Suited to modern washrooms in hotels, night clubs and restaurants.

about

The BRITEK *Multi Wash Plane Basin* is a fully hand made linear style stainless steel wash basin. Manufactured from heavy gauge commercial grade stainless steel, the Multi Wash Plane Basin embraces a minimalist multi basin design requiring no visible plug or washer and only one plumbing connection. Available in a dual, triple stations or fabricated to custom lengths this unit is hard wearing and durable and is a perfect combination of timeless aesthetics and robust functionality. Optional wall mounted tapware available.

sample spec. text

BRITEK Stainless Steel Multi Wash Plane Basin - **XXXX** L x 497 W x 47 D O/A - Product Code HBMWP

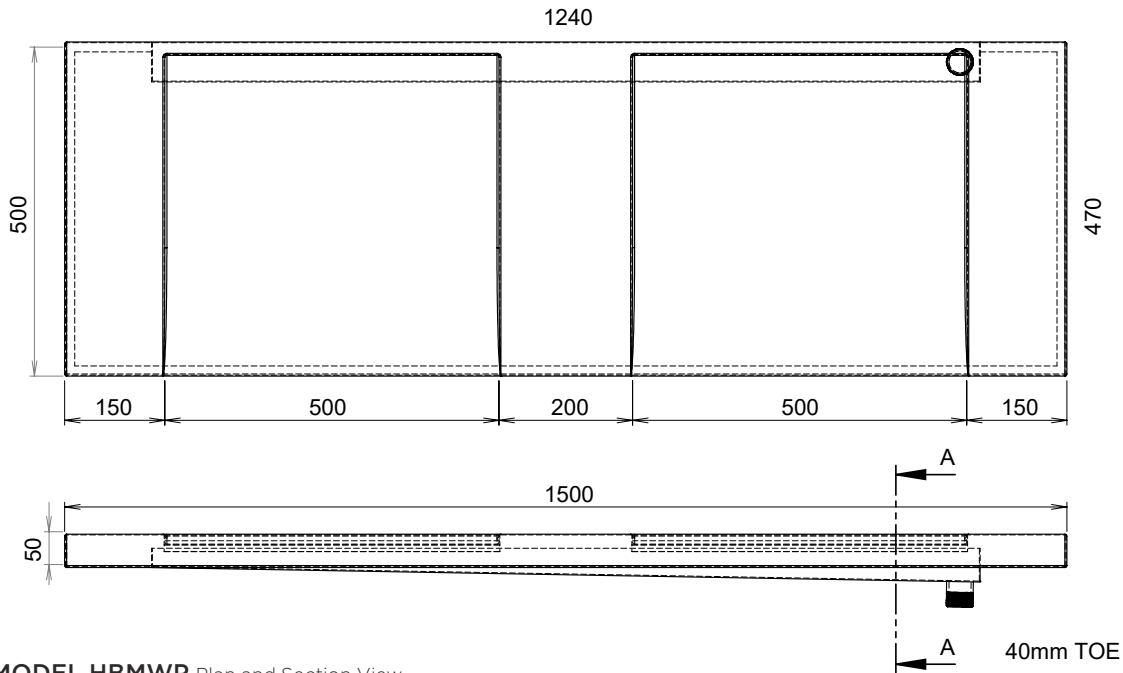
*RED TEXT may denote a **variable** where one option only is to be selected, a **nominal dimension** that needs to be specified, or an **optional feature** that can be removed if not required. Please refer to the back of this page for additional specification details and options.

VISIT BRITEX.COM.AU TO DOWNLOAD BIM FILES, CAD DRAWINGS AND THE MOST CURRENT PRODUCT LITERATURE.

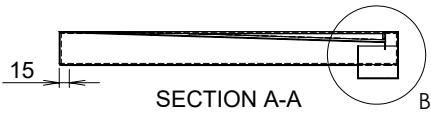
MULTI WASH PLANE BASIN

PRODUCT CODE

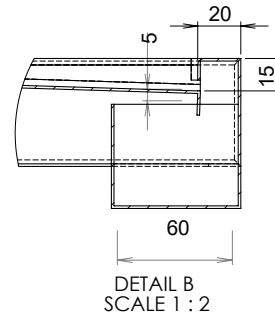
HBMWP



MODEL HBMWP Plan and Section View



MODEL HBMWP Waste Detail (B)



MODEL HBMWP Section A-A Detail

specifying guide

When specifying this product please include:

- Product Name and Code

options

- Custom Lengths
- Single Wash Plane Basins available (see Product HBMP)

VISIT BRITEX.COM.AU TO DOWNLOAD BIM FILES, CAD DRAWINGS AND THE MOST CURRENT PRODUCT LITERATURE.

Last Revised Feb 2023 | B