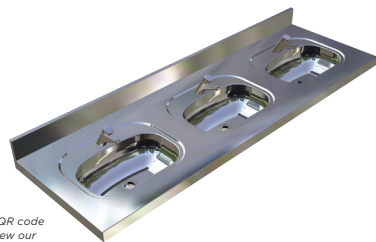


Multi Vanity Inset Basin



HBMV

Scan QR code
to view our
installation notes



To order this item please advise:

- Overall unit length
- Number of bowls required
- Tapware and tap hole details (if required)

Product Info:

- Supplied in custom lengths
- Suitable for wall mounting or on top of joinery
- Provides multiple basins in one seamless unit
- Satin finish top, highly polished bowls
- Integral rear splashback
- 40mm wastes and wall brackets supplied
- Optional tapware (see Tapware: Section 11)

Suggested Tapware:

(see Tapware Section: 11 for complete range of options)



TW-9201
Deluxe Timed Flow
Pillar Tap



TW-9101
Eco Timed Flow
Pillar Tap



TW-9110
Euro Basin Mounted
Sensor Tap



TW-MIX-01
Basin Mounted
Flick Mixer - Fixed

INSTALLATION NOTES

1) Fixture strength is ultimately determined by the load capacity of the supporting structure (noggins recommended for stud walls) and use of appropriate fixings. 2) Basin is secured to wall with heavy duty stainless tube wall brackets. 3) Brackets are secured to basin by fixing to timber substrate with screws (not supplied). P traps not supplied. 4) Return (side) splashbacks and front support legs can be supplied by request.

Standard Basin Sizes:

1200mm - 2 bowls	2400mm - 4 bowls	3600mm - 6 bowls
1800mm - 3 bowls	3000mm - 5 bowls	4200mm - 7 bowls

