

GRANDEUR HAND WASH BASIN

HAND BASINS

#HBGU / GRANDEUR HAND WASH BASIN



features and benefits

- Optimal vandal resistance
- Fully welded, seamless construction
- Completely concealed plumbing
- P trap installation
- No sharp edges or corners
- Grade 304 satin S.S.
- Stylish, modern design
- 40mm waste outlet
- Dual access panels
- Concealed fixings
- Front and rear fixed models
- Choice of tapware styles
- 7 litre bowl capacity
- 1, 2 or 3 tap holes
- Optional anti-ligature waste
- Suits detention projects, holding cells, public amenities and bars

about

The BRITEX Stainless Steel Grandeur Basin is a stylish looking fixture that incorporates prison-grade vandal resistance. Key to its design is a fully welded with radiused front edge. A rounded profile above and below the basin also ensures there are no ligature points, and all fixing points are concealed. Plumbing connections are secure within the stainless steel shroud that can incorporate a dual access panel if fixing from the front and an anti-ligature security waste is optional. Can be supplied with a wide range of tapware including anti-vandal timed flow pillar taps, sensor taps or low-profile security tapware for maximum vandal resistance.

sample spec. text

BRITEX S.S. Grandeur Hand Wash Basin - 440L x 400W x 300D O/A. *Front/Rear* fixed model. Complete with rolled safety fascia, 40mm *security/polypropylene* waste outlet and *XXXXX* tapware - Product Code HBGU-XX-TW-XXXX

NB Please refer to reverse page for tapware and basin options

*RED TEXT may denote a **variable** where one option only is to be selected, a **nominal dimension** that needs to be specified, or an **optional feature** that can be removed if not required. Please refer to the back of this page for additional specification details and options.

VISIT BRITEX.COM.AU TO DOWNLOAD BIM FILES, CAD DRAWINGS AND THE MOST CURRENT PRODUCT LITERATURE.

GRANDEUR HAND WASH BASIN

PRODUCT CODE

HBGU Basin only

HOW TO SPECIFY: Grandeur Hand Wash Basin

Sample Specification Code

A **B** **C**
HBGU - RF - TW-9202

= Grandeur Hand Basin, Rear Fixed with Deluxe Timed Flow Mixer Tap

Specification Key

A = Product Code

B = Fixing Method

RF : Rear Fixed
(no access panel)

FF : Front Fixed
(left hand access panel)

C = Tapware - if required
(see below for suggested tapware options)

Suggested Tapware Options:

(see Tapware Section: 11 for complete range of options)



TW-SEC-01
Security Tap Set
(Cold Only)



TW-9201
Deluxe Timed Flow
Pillar Tap



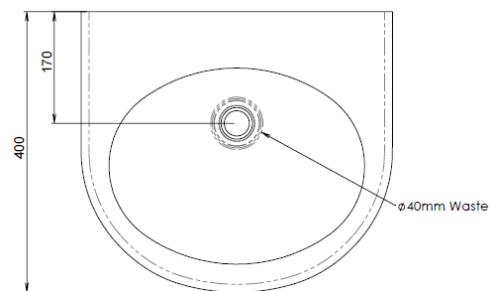
TW-9110
Basin Mounted
Sensor Tap



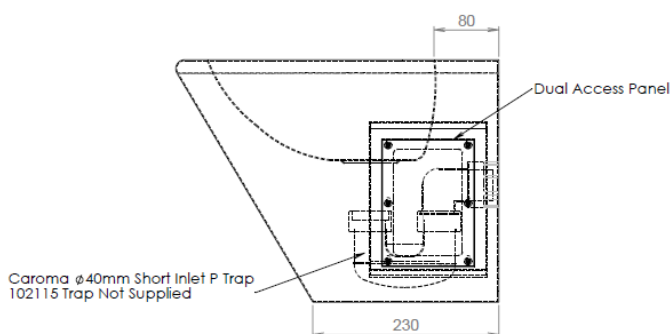
TW-9102
Eco Timed Flow
Pillar Tap



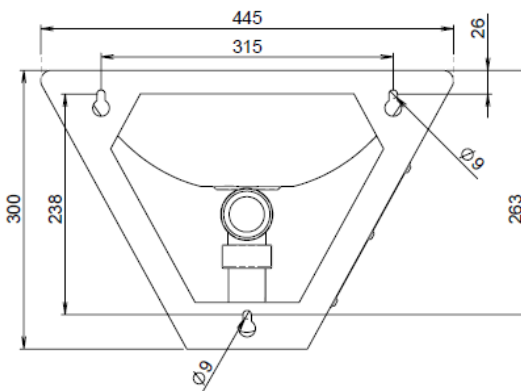
TW-MIX-01
Basin Mounted
Flick Mixer



MODEL HBGU Plan



MODEL HBGU Side Elevation



MODEL HBGU Rear Elevation

When specifying this product please include:

- Product **Name** and **Code**
- Product **Dimensions**
- **Tapware** details (if required)
- **Fixing Method** - Front or Rear
- **Waste Type** - Standard or Security

specifying
guide

options

- Tap holes
- Tapware - see Tapware Section: 11
- Anti-ligature security waste - ALWO-40

VISIT BRITEX.COM.AU TO DOWNLOAD BIM FILES, CAD DRAWINGS AND THE MOST CURRENT PRODUCT LITERATURE.

Last Revised Oct 2023 | B