

FLOATING WAND ROUND

HAND BASIN



Gooseneck Spout - T38022



features and benefits

- Hands-free activation
- Prevents cross-contamination
- 8 litre bowl capacity
- Compact space-saving size
- Activated by user leaning against wand
- No electrical connections
- Supplied pre-plumbed ready to install
- Includes pressure limiting valve
- Grade 304 S.S.
- 40mm waste outlet supplied
- Concealed wall brackets
- 50mm blade upstand to rear
- Supplied with gooseneck spout

about

The *BRITEX Stainless Steel Round Floating Wand Basin* is a compact sized, fully shrouded hands-free wash basin. Activation of the tap is done by leaning against the wand protruding from the basin shroud, eliminating the need for electronic / mains powered tapware in areas where avoiding cross-contamination is paramount. Supplied pre-plumbed and easy to install, the Round Floating Wand Basin comes complete with pressure limiting valve, 40mm waste outlet supplied with gooseneck type spout.

sample spec. text

BRITEX S.S. Floating Wand Hand Basin Round - 360L x 365W x 235H O/A. 8 litre bowl capacity. Supplied pre-plumbed with gooseneck type spout, activation wand, pressure limiting valve, mounting bracket, 40mm waste outlet and tempering valve - Product Code HBFWR

*RED TEXT may denote a variable where one option only is to be selected, a nominal dimension that needs to be specified, or an optional feature that can be removed if not required. Please refer to the back of this page for additional specification details and options.

VISIT BRITEX.COM.AU TO DOWNLOAD BIM FILES, CAD DRAWINGS AND THE MOST CURRENT PRODUCT LITERATURE.



MELBOURNE
Britex Place, Mirra Crt
Bundoora VIC 3083
t (03) 9466 9000
f (03) 9466 9044

SYDNEY
16 Northumberland Drv
Taren Point NSW 2229
t (02) 9531 2100
f (02) 9531 2800

PERTH
Unit 1/8 Principal Link
Malaga WA 6090
t (08) 9249 5464
f (08) 9248 6893

BRISBANE
19 Manilla St
East Brisbane QLD 4169
t (07) 3363 2400
f (07) 3363 2444

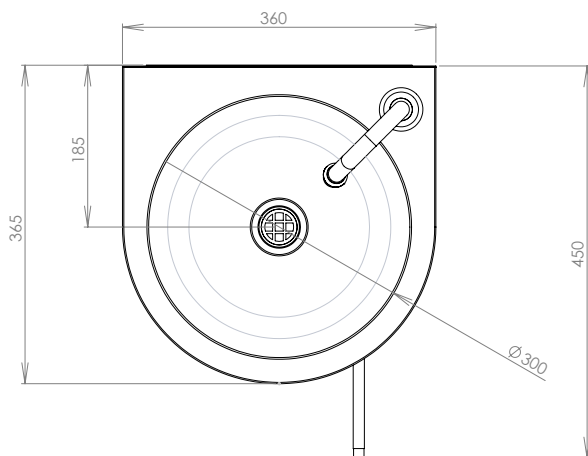
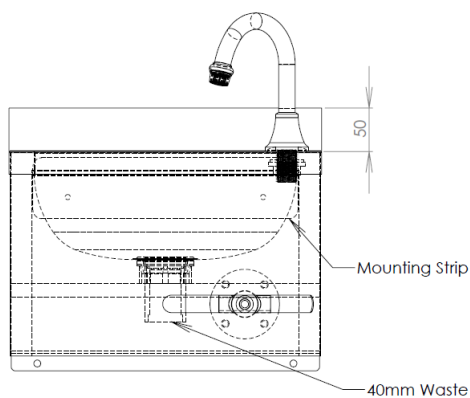
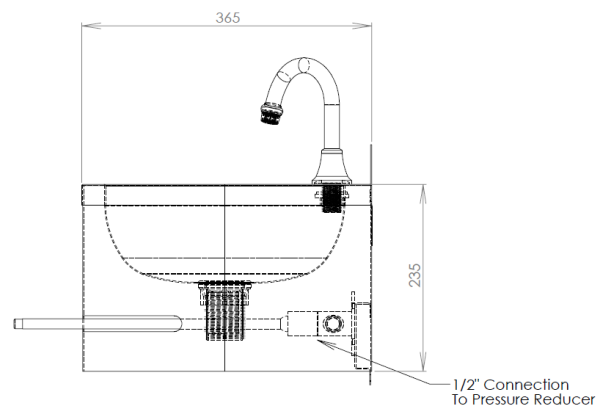
ADELAIDE
The Britex Group
SA State Office
t 1300 764 744
f 1300 784 306

britex.com.au | info@britex.com.au | A.B.N 83 004 309 737

FLOATING WAND ROUND

HAND BASIN

PRODUCT CODE

HBFWR**MODEL HBFWR** Plan**MODEL HBFWR** Front Elevation**MODEL HBFWR** Side Elevation

When specifying this product please include:

- Product **Name** and **Code**
- Product **Dimensions**

specifying guide

options

- Splashback Panel - Up to 500mm High
- Tempering valve

VISIT BRITEX.COM.AU TO DOWNLOAD BIM FILES, CAD DRAWINGS AND THE MOST CURRENT PRODUCT LITERATURE.

Last Revised Sep 2023 | Revision B