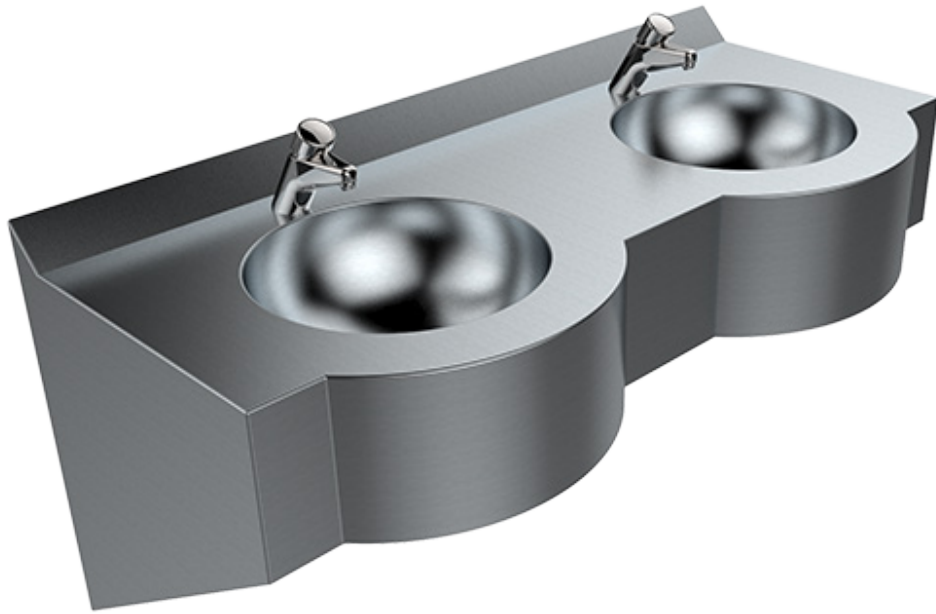


# CURVELINE VANITY MULTI BASIN

HAND BASINS



*Image shows Model HBCM-1200-2-TW-9201  
1200 mm Curveline Vanity Multi Basin with 2 Bowls and Deluxe Timed Flow Pillar Taps  
(tapware shown for indicative purposes only)*

## features and benefits

- Supplied in custom lengths
- Incorporates multiple hand basins
- Highly vandal resistant
- Fully welded, seamless construction
- P trap installation
- Completely concealed plumbing
- 40mm waste outlets supplied
- Grade 304 satin S.S.
- Vandal resistant access panels
- Heavy duty, concealed brackets
- 50mm angled rear upstand
- Choice of tapware
- Ideal for public amenities, night clubs, schools and bars

## about

The **BRITEX** Curveline Vanity Multi Basin is ideal for use in schools, public amenities, night clubs and pavilions where several patrons may require use of the basin at once. All basins are made to order and fabricated to the custom length required. Manufactured from heavy duty commercial grade 304 stainless steel, it incorporates a secure access panel, 40mm waste outlet and can be supplied complete with fully certified, vandal resistant timed flow pillar taps, sensor tapware or security tapware for maximum vandal resistance.

## sample spec. text

*BRITEX S.S. Curveline Vanity Multi Basin - XXXXL x 550W with X No. integral 300mm dia. bowls and concealed fixings. Supplied in satin finish complete with XXXX tapware, mounting brackets and removable access panels - Product Code HBCM-XXXX-X-TW-XXXX*

NB Please refer to reverse page for tapware and basin options

\*RED TEXT may denote a **variable** where one option only is to be selected, a **nominal dimension** that needs to be specified, or an **optional feature** that can be removed if not required. Please refer to the back of this page for additional specification details and options.

VISIT [BRITEX.COM.AU](http://BRITEX.COM.AU) TO DOWNLOAD BIM FILES, CAD DRAWINGS AND THE MOST CURRENT PRODUCT LITERATURE.

#HBCM / CURVELINE VANITY MULTI BASIN

# CURVELINE VANITY MULTI BASIN

PRODUCT CODE

**HBCM** Basin only

## HOW TO SPECIFY: Curveline Vanity Multi Basin

### Sample Specification Code

**A B C D**  
**HBCM - 1200 - 2 - TW-9204**

= Curveline Vanity Multi Basin, 1200mm Long with 2 Bowls and Deluxe Timed Flow Pillar Taps

### Specification Key

A = Product Code

B = Basin Length (mm)

C = No. of Bowls

D = Tapware - if required  
 (see below for suggested tapware options)

### Standard Basin Sizes:

1200mm - 2 bowls	2400mm - 4 bowls	3600mm - 6 bowls
1800mm - 3 bowls	3000mm - 5 bowls	4200mm - 7 bowls

### Suggested Tapware Options:

(see Tapware Section: 11 for complete range of options)



**TW-9204**  
Deluxe Timed Flow Pillar Tap



**TW-9102**  
Eco Timed Flow Wash Safe Pillar Tap



**TW-9110**  
Euro Basin Mounted Sensor Tap



**TW-9103**  
Timed Flow Lever Pillar Tap



**TW-MIX-01**  
Basin Mounted Flick Mixer



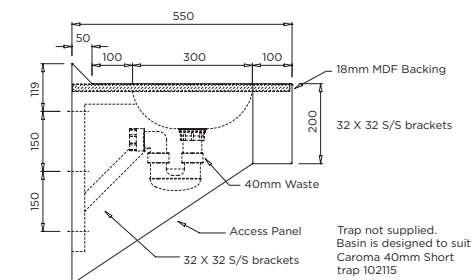
**TW-9108**  
Eco Timed Flow Lever Tap

*When specifying this product please include:*

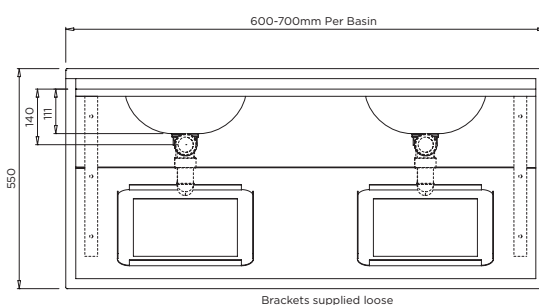
- Product **Name** and **Code**
- No. of **Bowls**
- Product **Dimensions**
- Tapware **details** (if required)

specifying guide

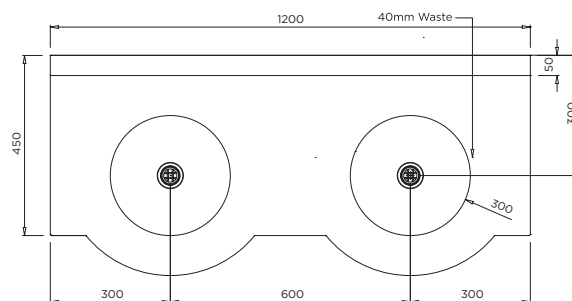
options



**MODEL HBCM** Side Elevation



**MODEL HBCM** Rear Elevation



**MODEL HBCM** Plan

VISIT [BRITEX.COM.AU](http://BRITEX.COM.AU) TO DOWNLOAD BIM FILES, CAD DRAWINGS AND THE MOST CURRENT PRODUCT LITERATURE.

Last Revised Jun 2023