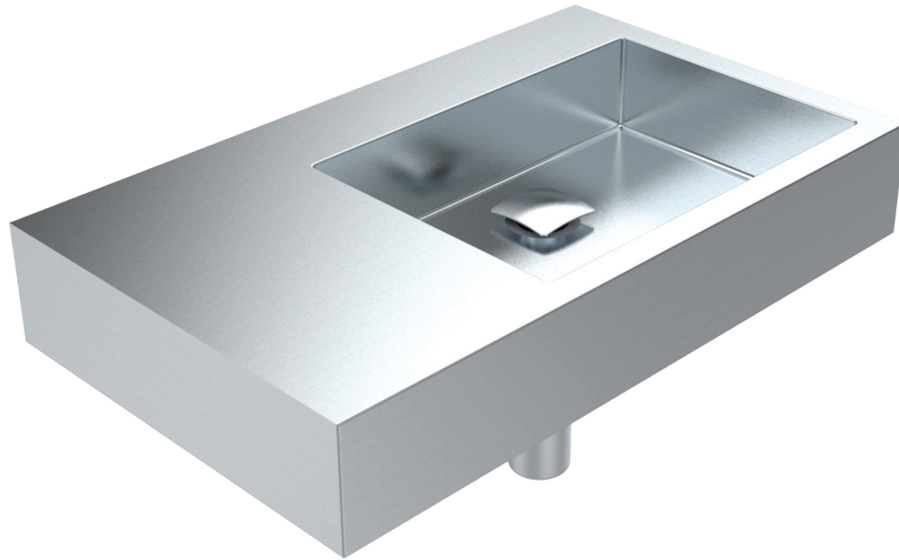


# ACCESSIBLE BELLAGIO BASIN

## WITH INTEGRATED SIDE SHELF



*Image Shows: HBBEL-DSL Bellagio Accessible Basin with LHS integral shelf and optional Bottle Trap*

### features and benefits

- Modern, square profile
- Fully hand made, seamless design
- Grade 304 satin stainless steel
- Double-skinned robust construction
- Integrated side shelf to meet AS1428.1 shelf requirement
- Integrated shelf available to the left or right (see model HBBEL-DSL/DSR)
- Integrated shelf available as larger central back landing (see model HBBEL-D)
- Wall mounted
- Stylish 40mm pop up square waste outlet
- 1, 2 or 3 tap holes

### about

The BRITEX Accessible Bellagio Wash Basin with Integrated Side Shelf is a fully hand made, double-skinned stainless steel wash basin that is both functional and robust. Manufactured from heavy gauge commercial grade stainless steel, the Accessible Bellagio wash basin is supplied complete with a 40mm stylish pop up square waste outlet. Designed with a integrated LHS or RHS shelf that meets AS1428.1 shelf requirements allows for the basin to be compliant without an additional shelf unit. For design flexibility the landing is also available centrally as a larger back landing. The Accessible Bellagio Basin is designed to be wall mounted.

### sample spec. text

BRITEX Stainless Steel Accessible Bellagio Wall Mounted Basin with Integrated Side Shelf - 650L x 450W x 100H  
O/A - complete with square pop waste and integral left/right shelf space - Product Code HBBEL-DXX

\*RED TEXT may denote a variable where one option only is to be selected, a nominal dimension that needs to be specified, or an optional feature that can be removed if not required. Please refer to the back of this page for additional specification details and options.

VISIT [BRITEX.COM.AU](http://BRITEX.COM.AU) TO DOWNLOAD BIM FILES, CAD DRAWINGS AND THE MOST CURRENT PRODUCT LITERATURE.



**MELBOURNE**  
Britex Place, Mirra Crt  
Bundoora VIC 3083  
t (03) 9466 9000  
e vic@britex.com.au

**SYDNEY**  
16 Northumberland Drv  
Taren Point NSW 2229  
t (02) 9531 2100  
e nsw@britex.com.au

**PERTH**  
Unit 1/8 Principal Link  
Malaga WA 6090  
t (08) 9249 5464  
e wa@britex.com.au

**BRISBANE**  
19 Manilla St  
East Brisbane QLD 4169  
t (07) 3363 2400  
e qld@britex.com.au

**ADELAIDE**  
The Britex Group  
SA State Office  
t 1300 764 744  
e sa@britex.com.au

[britex.com.au](http://britex.com.au) | [info@britex.com.au](mailto:info@britex.com.au) | A.B.N 83 004 309 737

# ACCESSIBLE BELLAGIO BASIN

## WITH INTEGRATED SIDE SHELF

PRODUCT CODE

**HBBEL-DSL** LHS Side Shelf

**HBBEL-DSR** RHS Side Shelf

### HOW TO SPECIFY: Accessible Bellagio Basin

*Sample Specification Code*

A   B   C   D  
**HBBEL-D SL - TW-9103-BTRAP**

= Accessible Bellagio Basin with Left Hand Shelf, Timed Flow Lever Tap and Bottle Trap

#### Specification Key

A = Product Code                      C = Tapware (optional)  
 B = Shelf Position (DR for Right Hand, Leave Blank for Centre)  
 D = Bottle Trap (optional)

#### Accessories


**TW-9108**

Timed Flow Wash  
Safe™ Pillar Lever Tap


**TW-G-15**

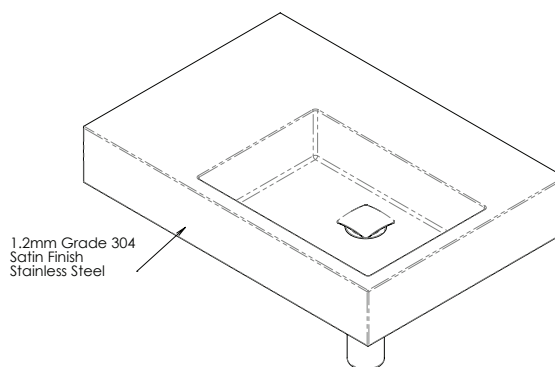
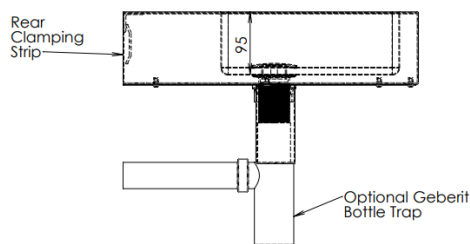
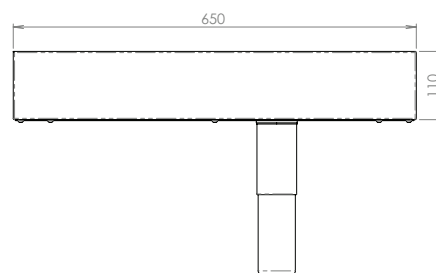
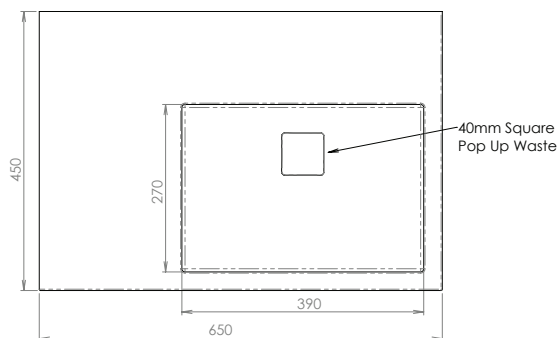
Curved Sensor Tap  
with Power Generator


**BTRAP**

Bottle Trap


**TW-MIX-L**

Hob Mounted Mixer  
Tap - Lever Action



specifying  
guide

When specifying this  
product please include:

- Product **Name** and **Code**

options

- Integral Shelf Unit  
Centre/ Left Hand Side / Right Hand Side
- Tapware (optional)
- Bottle Trap (optional)

VISIT [BRITEX.COM.AU](http://BRITEX.COM.AU) TO DOWNLOAD BIM FILES, CAD DRAWINGS AND THE MOST CURRENT PRODUCT LITERATURE.

Last Revised Oct 2023  
Revision B