



## features and benefits

- Chrome Plated Brass adaptors
- Multiple configurations to suit various urinals and cisterns
- Easy to specify product codes for all configurations
- Flush Pipe Size: 25mm or 38mm dia.
- Cistern Adaptor: 50mm or 40mm
- Flush pipe with various offsets
- Flush Pipe Nuts with O-ring seals
- 1.2mm grade 304 stainless steel flush pipe

## about

The *Britex Stainless Steel Flush Pipe Kit* is designed to suit a wide range of urinals and cistern combinations. For optimal versatility, the Britex Stainless Steel Flush Pipe Kit incorporates components of varying sizes to accommodate the common sizes of inlets and outlets of wall mounted cisterns and urinals. In addition, the offset in the stainless steel pipe allows for a tolerance in the varying distances of the cistern outlet and urinal inlet from the rear wall. The stainless steel flush pipe is fabricated from commercial grade 304 stainless steel in 38mm and 25mm diameter and the Chrome Plated Brass cistern adaptor is available in both 50mm and 40mm cistern outlet connection sizes.

## sample spec. text

*BRITEX Stainless Steel Flush Pipe Kit. Supplied complete with Chrome Plated brass cistern adaptor, **XXmm** diameter grade 304 stainless steel flush pipe and 2 x flush pipe nuts to suit - Product Code FPKX*

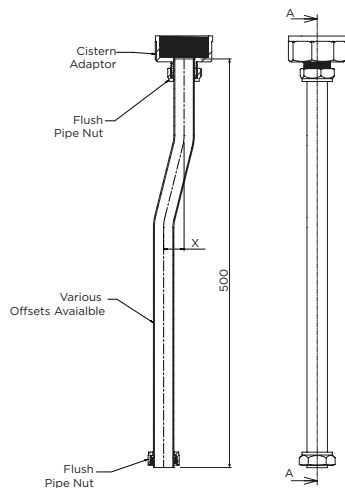
\*RED TEXT may denote a **variable** where one option only is to be selected, a **nominal dimension** that needs to be specified, or an **optional feature** that can be removed if not required. Please refer to the back of this page for additional specification details and options.

VISIT [BRITEX.COM.AU](http://BRITEX.COM.AU) TO DOWNLOAD BIM FILES, CAD DRAWINGS AND THE MOST CURRENT PRODUCT LITERATURE.

# FLUSH PIPE KITS

PRODUCT CODE

## FPK



A GUIDE TO:

## Choosing A Britex Flush Pipe Kit - FPK

### Britex Cisterns



**Push Button**  
FCS / FCS-LF (Low Flush)  
50mm BSP



**Dual Flush**  
FCD  
50mm BSP



**Pull Chain**  
FCP  
40mm BSP



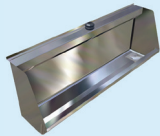
**Slab Urinals**  
USAN, UREG, USUP, UESI  
38mm Top Entry

not suitable

not suitable

### FPK10

- 40mm to 38mm Cistern Adaptor
- 38mm Nut (x2)
- 500mm (38mmØ) Flush Pipe with 46mm offset



**Trough Urinals**  
UTRO  
38mm Top Entry

### FPK7

- 50mm to 38mm Cistern Adaptor
- 38mm Nut (x1)
- 500mm (38mmØ) Flush Pipe with 7mm offset

not suitable

### FPK11

- 40mm to 38mm Cistern Adaptor
- 38mm Nut (x2)
- 500mm (38mmØ) Flush Pipe with 7mm offset



**Wall Hung Urinal Stall**  
UWHU  
25mm Top Entry

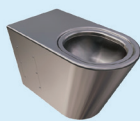
### FPK9

- 50mm to 25mm Cistern Adaptor
- 25mm Nut (x2)
- 500mm (25mmØ) Flush Pipe with 35mm offset

not suitable

not suitable

\*Low Flush Model Only\*



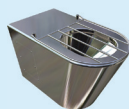
**Britex Pans**  
PG, PC, PCD, PCAM  
38mm Top Entry

not suitable

### FPK13

- 50mm to 38mm Cistern Adaptor
- 38mm Pan Adaptor
- 38mm Nut (x2)
- 500mm (38mmØ) Flush Pipe with no offset

not suitable



**Britex Slophopper**  
CSH  
38mm Top Entry

### FPK8

- 50mm to 38mm Cistern Adaptor
- 38mm Pan Adaptor
- 38mm Nut (x2)
- 500mm (38mmØ) Flush Pipe with no offset

not suitable

### FPK12

- 40mm to 38mm Cistern Adaptor
- 38mm Pan Adaptor
- 38mm Nut (x2)
- 500mm (38mmØ) Flush Pipe with no offset

### Flush Pipe Kits

VISIT [BRITEX.COM.AU](http://BRITEX.COM.AU) TO DOWNLOAD BIM FILES, CAD DRAWINGS AND THE MOST CURRENT PRODUCT LITERATURE.

Last Revised Aug 2017