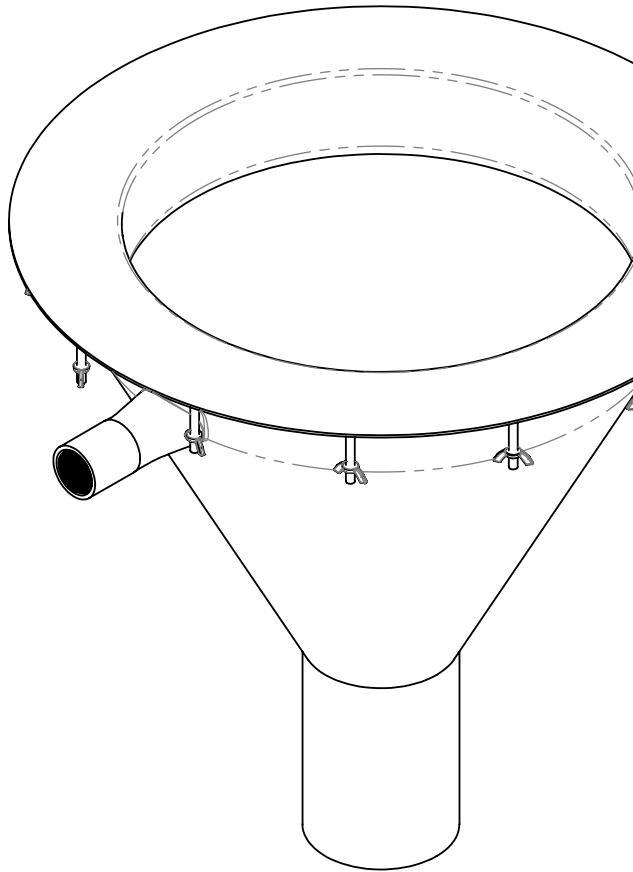


FLI2

Conical Inset Flushing Sink

Installation Guide



IMPORTANT

ALL SERVICE TO BE PERFORMED BY AN AUTHORISED SERVICE PERSON

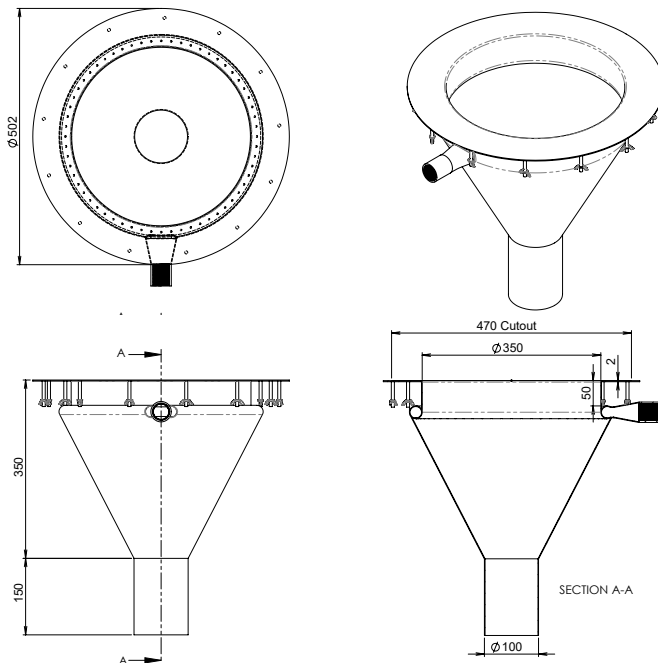
Installation of this unit must be in accordance with AS/NZS 3500.1, AS/NZS 3500.2, the PCA and the local regulatory requirements. Water and/or electrical supply conditions must comply to national or state requirements and standards. Failure to comply shall void the product warranty and may affect the performance of the product. For further support and after-sales care, please contact Britex.

⚠ WARNING

WHEN INSTALLATION IS COMPLETE, ENSURE THESE INSTRUCTIONS REMAIN INSIDE THE PLASTIC BAG PROVIDED WITH THE UNIT FOR FUTURE REFERENCE

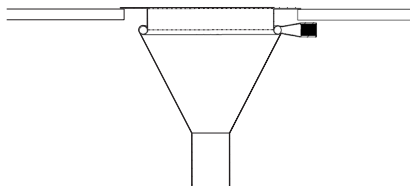
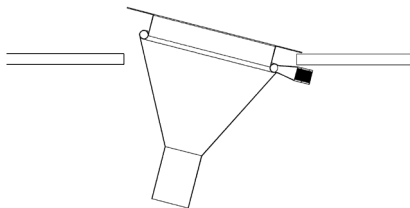
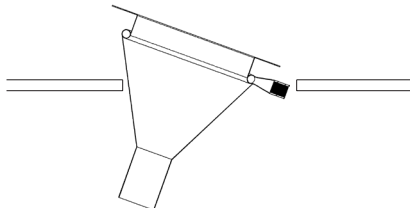
About

BRITEX Stainless Steel Inset Flushing Sinks are supplied with a flange around the top of the bowl allowing them to be inset into almost any solid surface. Fabricated from 1.2mm commercial grade 304 or acid resisting grade 316 satin finish stainless steel, the bowl includes a concealed perforated tube around the top of the bowl that can be 'flushed' when connected to a flush valve and provides efficient, hygienic removal of liquid waste from all internal bowl surfaces. BRITEX Stainless Steel Inset Flushing Sinks are available with a 100mm dropper waste and are commonly placed in health projects and aged care facilities or in wineries, where they are used as a wine spittoon. An OEM version of this product - without top flange - can be supplied for welding into bench tops by others.



Installation Instructions

- 1) Pull the item out of the box and ensure there is no damage to the unit, if there is notify Britex within the first 24 hours of receipt.
- 2) Establish the area the flushing inlet sink will be going into, if it is bench cut the hole 15mm smaller than the diameter of the flange.



- 3) Place the Flushing sink into the opening according to the drawings provided above.
- 4) There is a number of M6 fixing studs around the bowl that need to be secured to the bench.
- 5) Now the water supply can be connected, the connection is 25mm bsp socket inlet. (Refer to Flushing device requirements and recommendations on Pressures and volumes)
- 6) Connect the 100mm waste outlet and ensure the flushing sink is working to the desired degree. This product is designed to flush 4.5L. Install flushing device as per installation instructions. (FFV-E1 recommended flushing device)

Technical Parameters

Inlet Connection	1" Female BSP
Bowl size	350 Ø 300 deep (internal).

Care and Maintenance

Stainless steel products should be always kept clean. The secret to stainless steel's ability to maintain a high-quality finish and promises of a long-life expectancy is the invisible chromium-oxide film that sits on the surface and protects the steel beneath. To maintain this film, it is essential that the surface remains clean and in constant contact with oxygen. If this film is penetrated (either by abrasion or chemically) and dirt, liquid, grime contaminants embed themselves in these micro chasms for an extended period, the chromium oxide film will not be able to regenerate and the steel below will eventually become damaged and discoloured. What we recommend for general cleaning and maintenance:

What we recommend for general cleaning and maintenance:

Cleaning Materials:

- A soft cloth
- A soft-bristled brush
- A natural or artificial sponge

Cleaning Solutions:

- Hand washing soap / soft water solution
- Mild soap / soft water solution
- White vinegar / soft water solution

It is recommended that general cleaning of stainless steel surfaces be carried out weekly, or as soon as a build up of surface media has been observed. To clean, simply wash stainless steel surfaces with, warm, diluted, mild soapy water using a cloth or soft bristled brush. Once all dirt, oil and grime is removed, rinse thoroughly with clean water and wipe dry.

Recommended Flushing Devices



FFV-E1
Single Electronic Flush Valve

Warranty

The BRITEX product is backed by our manufacturer's warranty available for download from our website at www.britex.com.au. We expressly warrant that the product is free from operational defects in workmanship and materials for the warranty period indicated on the schedule in the manufacturer's warranty. During the warranty period, BRITEX will repair or replace any defective products manufactured by BRITEX at no charge, provided that the terms of the manufacturer's warranty are followed.

This warranty is the only warranty given by BRITEX, and we expressly disclaim all other warranties, including but not limited to implied warranties of merchantability and fitness for a particular purpose. This warranty represents the sole and exclusive remedy for breach of warranty, and BRITEX shall not be liable for any incidental, special, or consequential damages, including lost profits, labor charges, delays, vandalism, negligence, fouling caused by foreign material, damage from adverse water conditions, chemical, electrical or any other circumstances beyond BRITEX's control.

This warranty shall be void if the product is abused, misused, improperly installed, maintained, or altered. By purchasing our product, you agree to these terms and conditions. We appreciate your business and look forward to providing you with high-quality products and services.

Notes

Notes



MELBOURNE

Britex Place Mirra Crt
Bundoora VIC 3083
t (03) 9466 9000
e vic@britex.com.au

SYDNEY

16 Northumberland Drv
Taren Point NSW 2229
t (02) 9531 2100
e nsw@britex.com.au

PERTH

Unit 1/8 Principal Link
Malaga WA 6090
t (08) 9249 5464
e wa@britex.com.au

BRISBANE

19 Manilla St
East Brisbane QLD 4169
t (07) 3363 2400
e qld@britex.com.au

ADELAIDE

The Britex Group
SA State Office
t 1300 764 744
e sa@britex.com.au