



Scan QR code  
to view online



Image shows Model FLF 2 Flushing Sink with Conical Bowl

## features and benefits

- 1.2mm grade 304 or 316 S.S.
- Quickly & hygienically disposes of liquid and solid waste
- Concealed internal flushing rim
- All internal bowl surfaces are flushed
- Made to custom specifications
- Suits mounting on joinery
- Available in a 'Dirty Utility Sink' configuration - see LDUS: p 9.01

## about

*BRITEX Stainless Steel Flushing Sinks* incorporate an integral flushing bowl that provides efficient, hygienic removal of waste from all internal bowl surfaces, and solid waste when 100mm outlet selected. Fabricated from 1.2mm commercial grade 304 or acid resisting grade 316 satin finish stainless steel, integral flushing bowls are cone shaped (100mm tube dropper waste) and include a concealed perforated tube around the top of the bowl that can be 'flushed' when connected to a flush valve – such as an In-wall cistern. Fully custom fabricated to suit each individual project; BRITEX Flushing Sinks are available in a wide range of sizes and are commonplace in health projects and aged care facilities.

## sample spec. text

*BRITEX grade 304/316 Stainless Steel Conical Flushing Sink - XXXXmm Long x XXXmm Wide O/A with integral XXX mm High splashback to rear only. Integral conical flushing bowl to be 350mm ID with 100mm waste connection - Product Code FLF2*

\*RED TEXT may denote a **variable** where one option only is to be selected, a **nominal dimension** that needs to be specified, or an **optional feature** that can be removed if not required. Please refer to the back of this page for additional specification details and options.

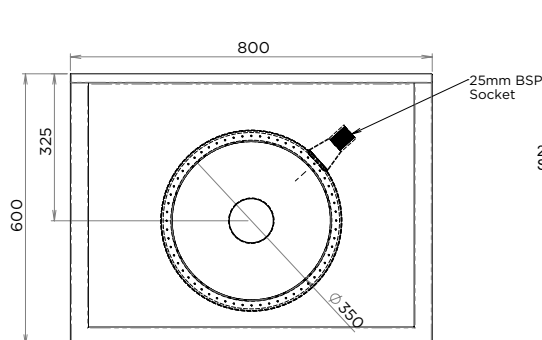
VISIT [BRITEX.COM.AU](http://BRITEX.COM.AU) TO DOWNLOAD BIM FILES, CAD DRAWINGS AND THE MOST CURRENT PRODUCT LITERATURE.

# CONICAL FLUSHING SINK

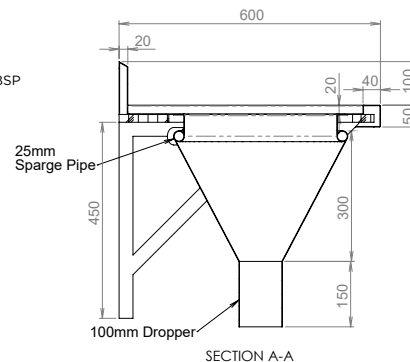
PRODUCT CODE

**FLF 2** Conical Bowl

FLF 2 CONICAL Bowl Sizes I.D.
Ø300
Ø350
Ø400
Ø450
Ø500
<i>custom-consult BRITEX</i>



MODEL FLF 2 Plan

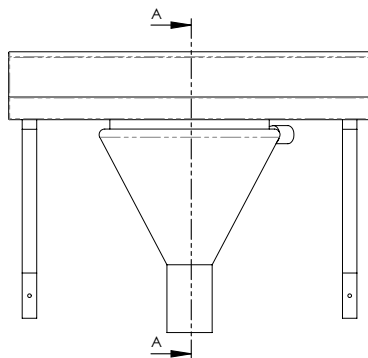


MODEL FLF 2 Section

Suggested Tapware:



TW-ST5  
Slophopper Trigger Spray



MODEL FLF 2 Front Elevation

specifying  
guide

*When specifying this  
product please include:*

- Product **Name** and **Code**
- Product **Dimensions**
- **Grade** of Stainless Steel (304 or 316)
- **Bowl** size
- **Waste** Size - 100mm

options

- Grade 304 or 316 S.S.
- Available in custom sizes
- Support Legs and/or Wall Brackets
- Grate for waste outlet (suits liquid waste disposal only)
- Supplied without top flange for welding into stainless bench top by others (OEM)

VISIT [BRITEX.COM.AU](http://BRITEX.COM.AU) TO DOWNLOAD BIM FILES, CAD DRAWINGS AND THE MOST CURRENT PRODUCT LITERATURE.

Last Revised 2020