

ELECTRONIC FLUSH VALVES

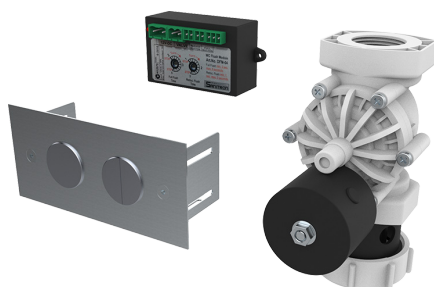
WITH SINGLE, STANDARD AND ACCESSIBLE PIEZO BUTTONS



Model FFV-E1-P : Electronic Flush Valve with Single Button with Security Plate (available as FFV-E1 without mounting plate)



Model FFV-E45 : Electronic Flush Valve with Double Standard Buttons Only



Model FFV-E45-P : Electronic Flush Valve with Double Standard Buttons on mounting plate.



Model FFV-E45-PD : Electronic Flush Valve with Double Accessible Buttons on mounting plate.

features and benefits

- Stylish, Clean and Minimalist Stainless Steel activator button with Piezo Technology.
- Flush is activated by pressing onto the surface of the button.
- 1.4mm Stainless Steel Piezo Button on (optional) Vandal Resistant Stainless Steel Plate
- High operational reliability.
- In built control to prevent misuse.
- Mains powered flush (adjustable)
- Suited to slab and trough urinals, slophoppers, flushing floor wastes, inset flushing sinks (dirty utility/sluice sinks)

about

Britex Accessible Electronic Flush Valves are available with single, standard and accessible piezo buttons to suit your application. Piezo buttons are available on their own or mounted on a vandal resistant stainless steel plate with security screws to suit high vandal applications such as corrections or public amenities projects. Additional mounting brackets are supplied with single plates to aid installation. For accessible use Piezo buttons are supplied with blue rings to meet the luminance contrast requirement for AS1428. Flush literage is available in 3, 4.5L configurations and are adjustable. Flush is simply activated by pressing onto the surface of the button. Double button configurations are recommended for flushing pans while single button models are recommended for flushing slab/urinal troughs, slophoppers or flushing sinks.

sample spec. text

Single Button

BRITEX Electronic Flush Valve with Single Button with/without Mounting Plate - Product Code FFV-E1-P

Double Button Standard

BRITEX Electronic Flush Valve with Double Standard Button with/without Mounting Plate - Product Code FFV-E45-P

Double Button Accessible

BRITEX Electronic Flush Valve with Double Accessible Button with Mounting Plate - Product Code FFV-E45-PD

*RED TEXT may denote a **variable** where one option only is to be selected, a **nominal dimension** that needs to be specified, or an **optional feature** that can be removed if not required. Please refer to the back of this page for additional specification details and options.

VISIT BRITEX.COM.AU TO DOWNLOAD BIM FILES, CAD DRAWINGS AND THE MOST CURRENT PRODUCT LITERATURE.



MELBOURNE
Britex Place, Mirra Crt
Bundoora VIC 3083
t (03) 9466 9000
e vic@britex.com.au

SYDNEY
16 Northumberland Drv
Taren Point NSW 2229
t (02) 9531 2100
e nsw@britex.com.au

PERTH
Unit 1/8 Principal Link
Malaga WA 6090
t (08) 9249 5464
e wa@britex.com.au

BRISBANE
19 Manilla St
East Brisbane QLD 4169
t (07) 3363 2400
e qld@britex.com.au

ADELAIDE
The Britex Group
SA State Office
t 1300 764 744
e sa@britex.com.au

britex.com.au | info@britex.com.au | A.B.N 83 004 309 737

ELECTRONIC FLUSH VALVES

WITH SINGLE, STANDARD AND ACCESSIBLE PIEZO BUTTONS

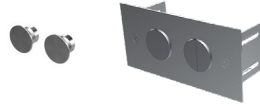
Britex Electronic Valve Piezo Button Options



Electronic Flush Valve consists of :
 1 x Adjustable Flow Timer,
 1 x 1" High Flow Flush Solenoid
 1 x 240v Plug pack, and your choice
 of Piezo Button Style (right)

Standard Buttons

Double Piezo Buttons



FFV-E45

FFV-E45-P

Plate Size: 150 x 75mm
 Cut out: 114 x 51 mm

Accessible Buttons

Double Piezo Buttons (Blue Rings)



FFV-E45-PD

Plate Size: 150 x 75mm
 Cut out: 114 x 51 mm

Single Flush

Single Piezo Button



FFV-E1

FFV-E1-P

Plate Size: 100 x 70mm
 Cut Out: 80 x 50mm



Britex Pans + Combi Unit
 PG, PC, PCD, PCAM, PWM, PPS + SCU

SUITABLE
3/4.5L

SUITABLE
3/4.5L

(Accessible / Ambulant Pans)

NOT SUITABLE*

*exception for correctional
 projects ONLY please
 contact Britex



Britex Urinal Pods
 UR, UBW

NOT SUITABLE

NOT SUITABLE

NOT SUITABLE



Britex Slab Urinals
 USAN, UREG, USUP, UESI

NOT SUITABLE

NOT SUITABLE

SUITABLE
4.5L

Required for every 2m of
 urinal or part thereof



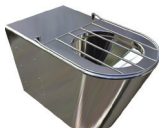
Britex Inset Flushing Sink
 FLI2

NOT SUITABLE

NOT SUITABLE

SUITABLE
4.5L

NB: When paired with a
 Britex Inset Flushing Sink
 a 40mm-25mm reducer
 is required - by others



Britex Slophopper
 CSH

NOT SUITABLE

NOT SUITABLE

SUITABLE
4.5L

specifying
 guide

*When specifying this
 product please include:*

- Product Name and Code
- Flush Volume (3/4.5L, 4.5L, 1.8L)
- Button Type - Single/ Standard/
 Accessible

options

- Piezo Button Style
- Mounting Plate

VISIT BRITEX.COM.AU TO DOWNLOAD BIM FILES, CAD DRAWINGS AND THE MOST CURRENT PRODUCT LITERATURE.

Last Revised 2019