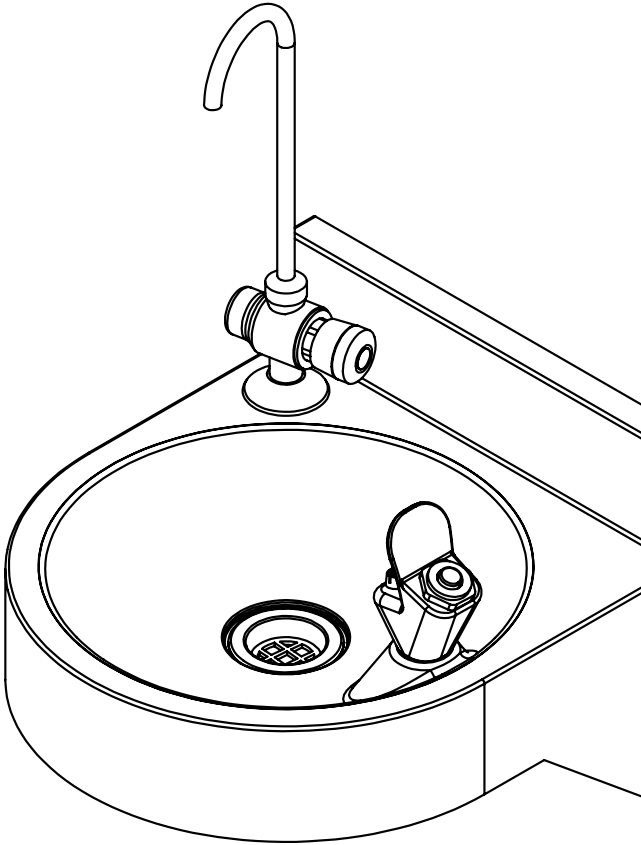


DWHC

*Compact Wall Mounted
Drinking Fountain*

**Installation
Guide**



MELBOURNE
BriteX Place Mira Crt
Bundoora VIC 3083
t (03) 9466 9000
e vic@briteX.com.au

SYDNEY
16 Northumberland Drv
Taren Point NSW 2229
t (02) 9531 2100
e nsw@briteX.com.au

PERTH
Unit 1/8 Principal Link
Mallaga WA 6090
t (08) 9249 5464
e wa@briteX.com.au

BRISBANE
19 Manilla St
East Brisbane QLD 4169
t (07) 3363 2400
e qld@briteX.com.au

ADELAIDE
The BriteX Group
SA State Office
t 1300 764 744
e sa@briteX.com.au

IMPORTANT

ALL SERVICE TO BE PERFORMED BY AN AUTHORISED SERVICE PERSON

Installation of this unit must be in accordance with AS/NZS 3500.1, AS/NZS 3500.2, the PCA and the local regulatory requirements. Water and/or electrical supply conditions must comply to national or state requirements and standards. Failure to comply shall void the product warranty and may affect the performance of the product. For further support and after-sales care, please contact Britex.



WARNING

WHEN INSTALLATION IS COMPLETE, ENSURE THESE INSTRUCTIONS REMAIN INSIDE THE PLASTIC BAG PROVIDED WITH THE UNIT FOR FUTURE REFERENCE

About

The BRITEX Stainless Steel Wall Mounted Drinking Fountain is a practical fixture, suitable for a range of project applications. It is supplied complete with a heavy-duty push button Drink Safe™ low lead bubbler, waste outlet and incorporates a raised landing area around the bubbler to help minimise any potential water runoff. Manufactured from commercial grade 304 stainless steel.

Preparation and Completion Notes

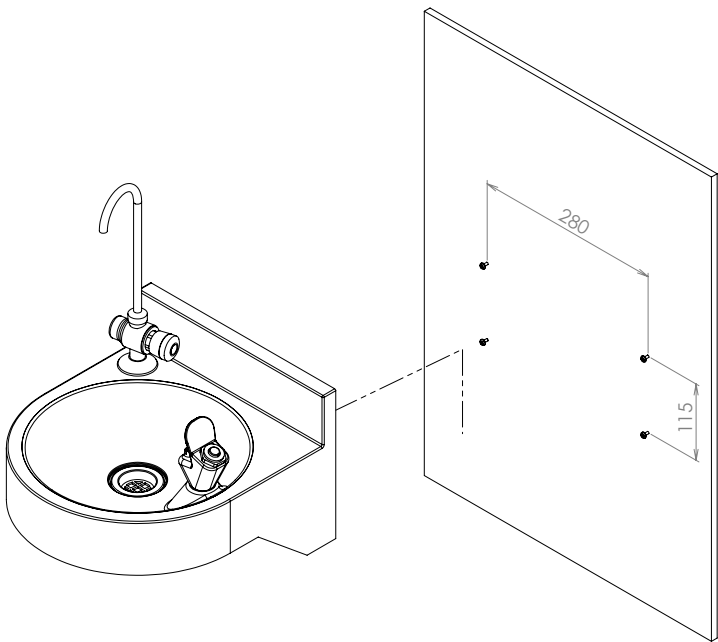
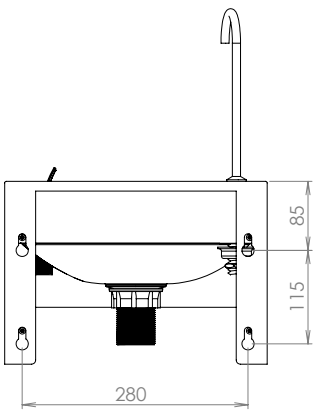
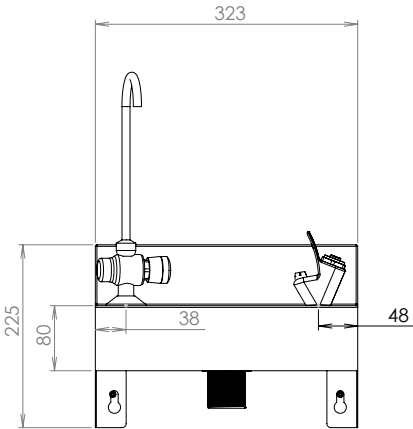
Contractors please note: Ideally, stainless steel drinking fountain should be installed after all other building activities that could cause contamination to the surface of the stainless steel have been completed.

These activities include:

Using proprietary building mortar removers containing hydrochloric acid. Welding, cutting and grinding that may 'spray' carbon steel and iron particles onto the stainless-steel surface.

1. Remove drinking fountain from box packaging and inspect for any damage before beginning installation process.
2. Confirm all requested details are correct.
3. If the drinking fountain is damaged in transit or if any details are not as requested, do not install it. Notify Britex immediately within 24 hours of receipting the product.

DWHC Installation Drawing



Installation Instructions

1. Fixture strength is ultimately determined by the load capacity of the supporting structure, noggins are recommended for stud walls, we recommend sleeve anchors for masonry walls, ensure you use of appropriate fixings when you are fixing the DWHC to the wall.
2. Basin is secured to wall via 4 fixing holes, these are integrated into the back of the fountain body.
3. Once the compact wall mounted fountain is fixed to the wall the waste can be connected along with the bubble and or the bottle filler to the mains. The trap and the fixings are not supplied with the unit.
4. An in-line filter to prevent debris fouling bubbler or the jug filler is recommended by Britex. This is not supplied.
5. Once the waste and bubbler are installed, check to see if the unit is working to the desired degree and there are no leaks.

Technical Parameters

Inlet Connection	1/2" BSP Male
Recommended Inlet Pressure	350 kPa
Maximum Inlet Pressure	500 kPa
Water Supply Temperature Limitations	Min 5; Max 60°C
Nominal Flow Rate	(LPM) 1.95
Finish	Chrome

Troubleshooting

PROBLEM	CAUSES	ACTION
No Water	Water is turned off	Turn on water
Leaking waste pipe	Crack in pipe	Call a plumber to fix the issue
Inconsistent flow	Blocked top assembly	Remove top assembly and clean
Button hard to press	The mains pressure may be too great	Reduce to below 500kPa (70PSI).

Spare Parts



TW-BF-HF
Jug Filler Push Button CP 6 Star 4.5L/Min Drink Safe



TW-CPB
Bubbler Chrome Plated (Low Lead Brass) Drink Safe with Metal Mouth Guard

Care and Maintenance

Stainless steel products should be kept clean at all times. The secret to stainless steel's ability to maintain a high-quality finish and promises of a long-life expectancy is the invisible chromium-oxide film that sits on the surface and protects the steel beneath. To maintain this film, it is essential that the surface remains clean and in constant contact with oxygen. If this film is penetrated (either by abrasion or chemically) and dirt, liquid, grime contaminants embed themselves in these micro chasms for an extended period, the chromium oxide film will not be able to regenerate and the steel below will eventually become damaged and discoloured.

What we recommend for general cleaning and maintenance:

Cleaning Materials:

- A soft cloth
- A soft-bristled brush
- A natural or artificial sponge

Cleaning Solutions:

- Hand washing soap / soft water solution
- Mild soap / soft water solution
- White vinegar / soft water solution

It is recommended that general cleaning of stainless-steel surfaces be carried out weekly, or as soon as a build-up of surface media has been observed. To clean, simply wash stainless steel surfaces with, warm, diluted, mild soapy water using a cloth or soft bristled brush. Once all dirt, oil and grime is removed, rinse thoroughly with clean water and wipe dry.

Warranty

The BRITEX product is backed by our manufacturer's warranty available for download from our website at www.britex.com.au. We expressly warrant that the product is free from operational defects in workmanship and materials for the warranty period indicated on the schedule in the manufacturer's warranty. During the warranty period, BRITEX will repair or replace any defective products manufactured by BRITEX at no charge, provided that the terms of the manufacturer's warranty are followed.

This warranty is the only warranty given by BRITEX, and we expressly disclaim all other warranties, including but not limited to implied warranties of merchantability and fitness for a particular purpose. This warranty represents the sole and exclusive remedy for breach of warranty, and BRITEX shall not be liable for any incidental, special, or consequential damages, including lost profits, labor charges, delays, vandalism, negligence, fouling caused by foreign material, damage from adverse water conditions, chemical, electrical or any other circumstances beyond BRITEX's control.

This warranty shall be void if the product is abused, misused, improperly installed, maintained, or altered. By purchasing our product, you agree to these terms and conditions. We appreciate your business and look forward to providing you with high-quality products and services.



MELBOURNE
Britech Place Mira Crt
Bundoora VIC 3083
t (03) 9466 9000
e vic@britech.com.au

SYDNEY
16 Northumberland Drv
Taren Point NSW 2229
t (02) 9531 2100
e nsw@britech.com.au

PERTH
Unit 1/8 Principal Link
Malaga WA 6090
t (08) 9249 5464
e wa@britech.com.au

BRISBANE
19 Manilla St
East Brisbane QLD 4169
t (07) 3363 2400
e qld@britech.com.au

ADELAIDE
The Britech Group
SA State Office
t 1300 764 744
e sa@britech.com.au