

# FOOT ACTIVATED SQUARE DRINKING FOUNTAIN

HANDS FREE HYGIENE RANGE



*Model DSS-H Foot Activated Square Drinking Fountain with Drink Safe™ Bubbler Only*



*Model DSS-H2 Foot Activated Square Drinking Fountain with Drink Safe™ Bubbler and Glass Filler*

## features and benefits

- Freestanding fountain
- Fixes to ground below
- Grade 304 satin stainless steel
- Heavy duty WaterMark certified Drink Safe™ low lead bubbler
- 40mm waste outlet
- Vandal resistant removeable access hatch
- Optional In-built refrigeration unit
- Optional WaterMark certified Drink Safe™ glass filler
- Available in two heights 750/975mm
- Suits factories, offices and public amenities

## about

The *BRITEX Stainless Steel Foot Activated Square Drinking Fountain* is a free standing fountain manufactured from 1.2mm commercial grade 304 stainless steel, supplied with a heavy duty foot activated Drink Safe™ low lead bubbler and 40mm waste outlet. It is secured to the ground below with a fixing plate inside the base and is suitable for public reserves and sporting clubs. A flush mounted service hatch provides access for installation and maintenance requirements. Optional chilled model with built-in refrigeration unit is available that provides instant chilled water. Optional Drink Safe™ glass filler is also available activated by a second foot pedal built into the fountain.

## sample spec. text

*BRITEX S.S. Foot Activated Square Drinking Fountain - 380 x 375 x 975/750mm High. Supplied complete with 40mm waste outlet, WaterMark certified push button Drink Safe™ low lead bubbler, glass filler and removable access hatch, Ambient/Refrigerated Model - Product Code DSS X-HX*

\*RED TEXT may denote a variable where one option only is to be selected, a nominal dimension that needs to be specified, or an optional feature that can be removed if not required. Please refer to the back of this page for additional specification details and options.

VISIT [BRITEX.COM.AU](http://BRITEX.COM.AU) TO DOWNLOAD BIM FILES, CAD DRAWINGS AND THE MOST CURRENT PRODUCT LITERATURE.



**MELBOURNE**  
Britex Place, Mirra Crt  
Bundoora VIC 3083  
t (03) 9466 9000  
f (03) 9466 9044

**SYDNEY**  
16 Northumberland Drv  
Taren Point NSW 2229  
t (02) 9531 2100  
f (02) 9531 2800

**PERTH**  
Unit 1/8 Principal Link  
Malaga WA 6090  
t (08) 9249 5464  
f (08) 9248 6893

**BRISBANE**  
19 Manilla St  
East Brisbane QLD 4169  
t (07) 3363 2400  
f (07) 3363 2444

**ADELAIDE**  
The Britex Group  
SA State Office  
t 1300 764 744  
f 1300 784 306

[britex.com.au](http://britex.com.au) | [sales@britex.com.au](mailto:sales@britex.com.au) | A.B.N 83 004 309 737

#DSS-H / FOOT ACTIVATED SQUARE DRINKING FOUNTAIN

# FOOT ACTIVATED SQUARE DRINKING FOUNTAIN

## PRODUCT CODE

Code	Chilled	Height	Bubbler	Glass Filler
DSS-H	Ambient	750/975	✓	✗
DSS-H2	Ambient	750/975	✓	✓
DSSR-H	Refrigerated	975 only	✓	✗
DSSR-H2	Refrigerated	975 only	✓	✓

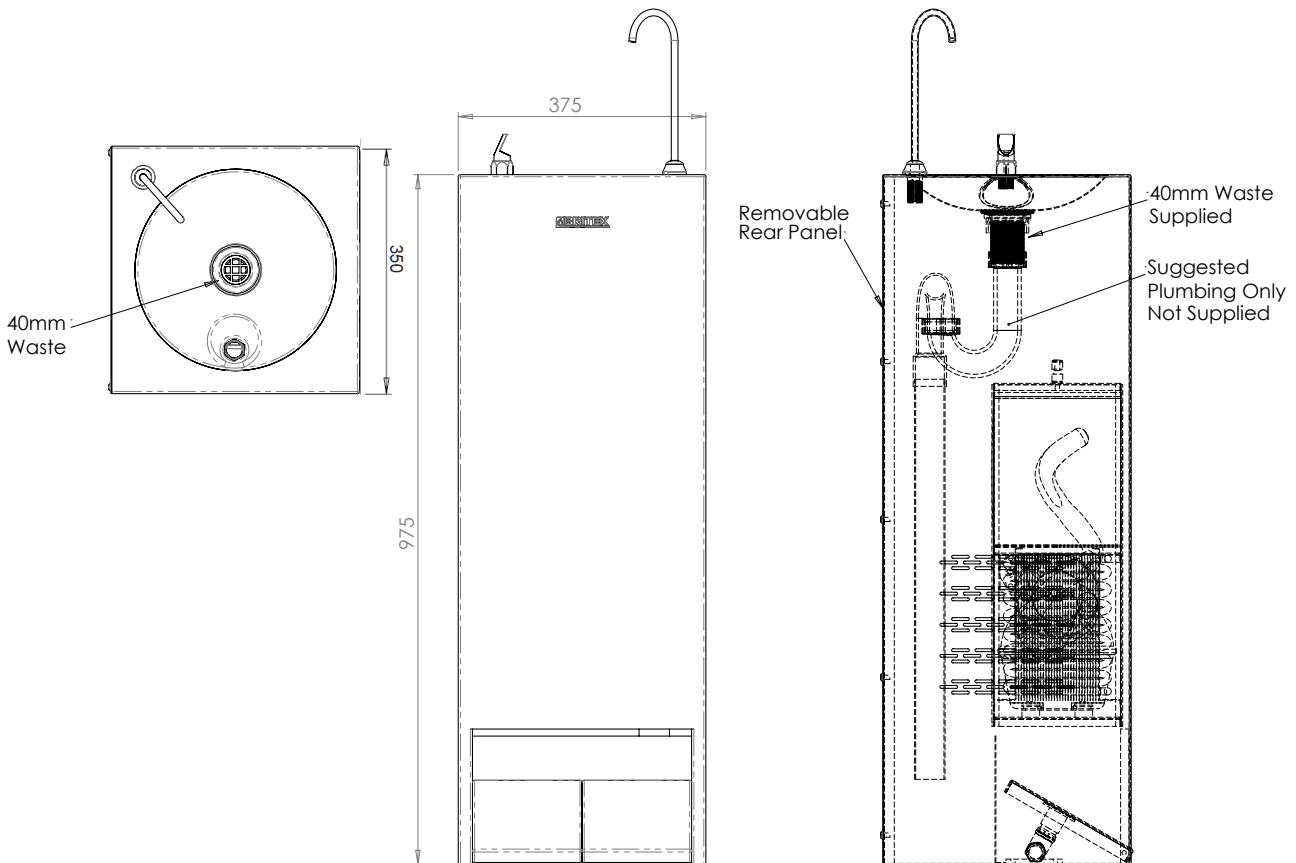
### Note:

Inlet Connection: 1/2" BSP Male,  
Inlet Pressure Range: 200-800 kPa,  
Inlet Temperature Range: 2-30°C

Installation shall be in accordance with AS/NZS 3500.1 and AS/NZS 3500.2.  
For troubleshooting, replacement parts and after-sales care, please contact Britex. Please visit the Britex website for care, cleaning and maintenance advice.

FOUNTAINS

#DSSR / REFRIGERATED FOUNTAIN ROUND



MODEL DSSR-H2 Plan, Front Elevation, Side Elevation

specifying guide

When specifying this product please include:

- Product Name and Code
- Product Dimensions

options

- 750mm height recommended for schools (not available in refrigerated model)
- 975mm height option
- Refrigeration or Ambient Water Models
- Optional Drink Safe™ Glass Filler Model (Two Foot Pedals)

VISIT [BRITEX.COM.AU](http://BRITEX.COM.AU) TO DOWNLOAD BIM FILES, CAD DRAWINGS AND THE MOST CURRENT PRODUCT LITERATURE.

Last Revised Oct 2022 | Revision A



Due to ongoing research and our commitment to product development, details are subject to change without notice. Details accurate at time of print. Please refer to [britex.com.au](http://britex.com.au) for the most current product information. Allow +/- 5mm tolerance for dimensions and setouts shown in product literature.

[britex.com.au](http://britex.com.au) | [sales@britex.com.au](mailto:sales@britex.com.au) | A.B.N 83 004 309 737

