

# ACCESSIBLE TWIN ROUND FOUNTAIN



## features and benefits

- Round profile for added safety
- Robust construction
- Completely freestanding
- Piezo Activated Drink Safe™ low lead Bubbler (Access End)
- AS1428 compliant
- Heavy duty WaterMark certified lead safe bubbler
- Grade 304 satin stainless steel
- 40mm waste outlet
- Optional bottle filler tap
- Optional Chiller Unit (Refrigerated Model)
- Vandal resistant access hatch
- Suits schools, factories and shopping centres

## about

The BRITEX Stainless Steel Accessible Twin Round Drinking Fountain is supplied complete with WaterMark certified Drink Safe™ low lead bubblers, piezo activated on the accessible end and heavy duty push button bubbler on the standard end. Manufactured from 1.2mm commercial grade 304 stainless steel the Drinking Fountain is freestanding and supplied with 40mm waste outlet. It is secured to the ground below with a fixing plate inside the base and is suitable for public reserves and sporting clubs. A flush mounted service hatch provides access for installation and maintenance requirements. A built-in refrigeration unit that provides instant chilled water is optional (refrigerated model DSR-2) as well as a bottle filler option.

## sample spec. text

BRITEX S.S. Twin Round Drinking Fountain - *Ambient/Refrigerated* Model. 400mm Dia x 975mm High. Supplied complete with 40mm waste outlet, 1 x WaterMark certified heavy duty push button Drink Safe™ low lead bubbler, 1 x Piezo Activated SS Drink Safe™ bubbler and removable access hatch - Product Code DSR-2

\*RED TEXT may denote a **variable** where one option only is to be selected, a **nominal dimension** that needs to be specified, or an **optional feature** that can be removed if not required. Please refer to the back of this page for additional specification details and options.

VISIT [BRITEX.COM.AU](http://BRITEX.COM.AU) TO DOWNLOAD BIM FILES, CAD DRAWINGS AND THE MOST CURRENT PRODUCT LITERATURE.



**MELBOURNE**  
Britex Place, Mirra Crt  
Bundoora VIC 3083  
t (03) 9466 9000  
f (03) 9466 9044

**SYDNEY**  
16 Northumberland Drv  
Taren Point NSW 2229  
t (02) 9531 2100  
f (02) 9531 2800

**PERTH**  
Unit 1/8 Principal Link  
Malaga WA 6090  
t (08) 9249 5464  
f (08) 9248 6893

**BRISBANE**  
19 Manila St  
East Brisbane QLD 4169  
t (07) 3363 2400  
f (07) 3363 2444

**ADELAIDE**  
The Britex Group  
SA State Office  
t 1300 764 744  
f 1300 784 306

[britex.com.au](http://britex.com.au) | [sales@britex.com.au](mailto:sales@britex.com.au) | A.B.N 83 004 309 737

# ACCESSIBLE TWIN ROUND FOUNTAIN

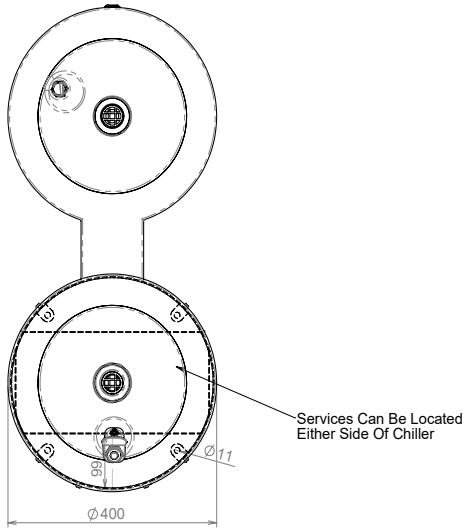
PRODUCT CODE

## DSR-2

Ambient Model

## DSRR-2

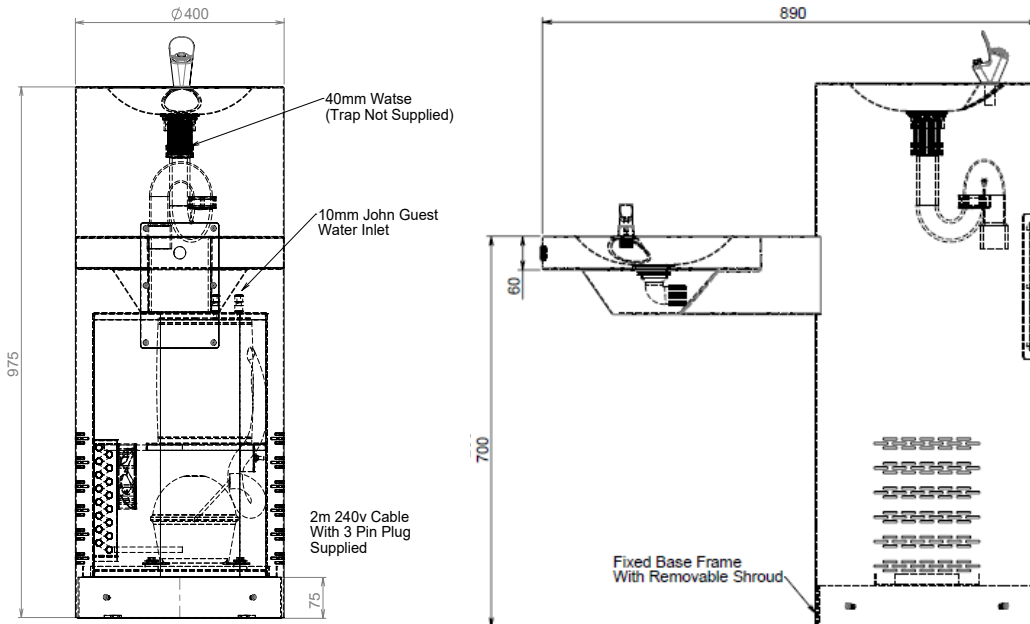
Refrigerated Model



**Note:**

**Inlet Connection:** 1/2" BSP Male,  
**Inlet Pressure Range:** 200-800 kPa,  
**Inlet Temperature Range:** 2-30°C

Installation shall be in accordance with AS/NZS 3500.1 and AS/NZS 3500.2. For troubleshooting, replacement parts and after-sales care, please contact Britex. Please visit the Britex website for care, cleaning and maintenance advice.



MODEL DSRR-2 Plan, Front Elevation, Side Elevation

*When specifying this product please include:*

- Product Name and Code
- Product Dimensions

specifying guide

options

- Optional Bottle Filler Drink Safe™ TW-BF-HF or TW-BF-SS
- Optional Chiller Unit (Refrigerated Model: DSRR-2)

VISIT [BRITEX.COM.AU](http://BRITEX.COM.AU) TO DOWNLOAD BIM FILES, CAD DRAWINGS AND THE MOST CURRENT PRODUCT LITERATURE.

Last Revised Oct 2022 | Revision A



Due to ongoing research and our commitment to product development, details are subject to change without notice. Details accurate at time of print. Please refer to [britex.com.au](http://britex.com.au) for the most current product information. Allow +/- 5mm tolerance for dimensions and setouts shown in product literature.

[britex.com.au](http://britex.com.au) | [sales@britex.com.au](mailto:sales@britex.com.au) | A.B.N 83 004 309 737

