

# DADO SINGLE ROUND

FOUNTAINS



AS-1428  
COMPLIANT



*Model DDR1-D DADO Single Round Accessible*

*Model DDR1-S DADO Single Round Standard*

## features and benefits

- Modern appearance
- Choice of accessible and compact (standard) models
- Front piezo timed flow Drink Safe™ low lead bubbler (7 second flow time)
- Stainless bracket supplied
- Remote refrigeration model available
- Grade 304 satin S.S.
- 40mm waste outlet
- Integral splashback panel
- Concealed Access
- Suits schools, airports, shopping centres and public areas

## about

The *BRITEX Stainless Steel Dado Single Round Drinking Fountain* - is a stylish, versatile fixture that can be supplied in either an accessible configuration or a space saving compact size. Both models are supplied complete with a front push, timed flow Drink Safe™ low lead bubbler, splashback panel, waste outlet, mounting bracket and concealed access. Manufactured from commercial grade 304 stainless steel. Refrigerated models are supplied with a separate remote chiller unit for installation within wall cavity.

## sample spec. text

BRITEX S.S. Dado Single Round Drinking Fountain - **Standard/Accessible** model. Backing panel to be 500L x 600H. Supplied complete with 40mm waste outlet, front piezo activated Drink Safe™ low lead bubbler. **AS1428 compliant** - Product Code DDR1-X

\*RED TEXT may denote a **variable** where one option only is to be selected, a **nominal dimension** that needs to be specified, or an **optional feature** that can be removed if not required. Please refer to the back of this page for additional specification details and options.

VISIT [BRITEX.COM.AU](http://BRITEX.COM.AU) TO DOWNLOAD BIM FILES, CAD DRAWINGS AND THE MOST CURRENT PRODUCT LITERATURE.



**MELBOURNE**  
Britex Place, Mirra Crt  
Bundoora VIC 3083  
t (03) 9466 9000  
f (03) 9466 9044

**SYDNEY**  
16 Northumberland Drv  
Taren Point NSW 2229  
t (02) 9531 2100  
f (02) 9531 2800

**PERTH**  
Unit 1/8 Principal Link  
Malaga WA 6090  
t (08) 9249 5464  
f (08) 9248 6893

**BRISBANE**  
19 Manilla St  
East Brisbane QLD 4169  
t (07) 3363 2400  
f (07) 3363 2444

**ADELAIDE**  
The Britex Group  
SA State Office  
t 1300 764 744  
f 1300 784 306

[britex.com.au](http://britex.com.au) | [sales@britex.com.au](mailto:sales@britex.com.au) | A.B.N 83 004 309 737

#DDR1 / DADO SINGLE ROUND

# DADO SINGLE ROUND

PRODUCT CODE

## DDR1-S

Standard (Compact) Model

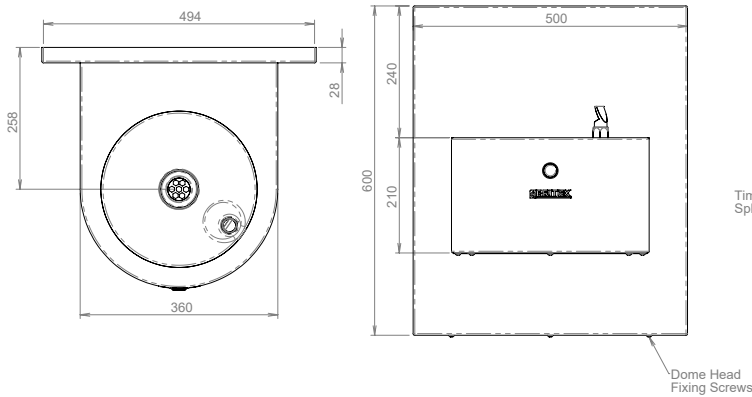
## DDR1-D

Accessible Model

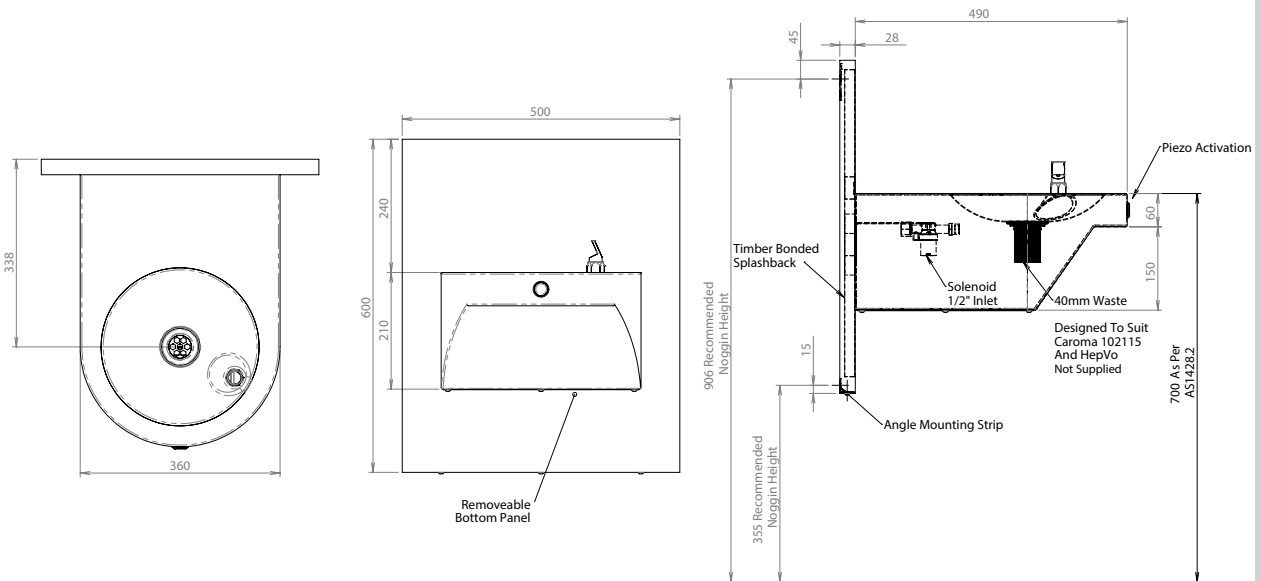
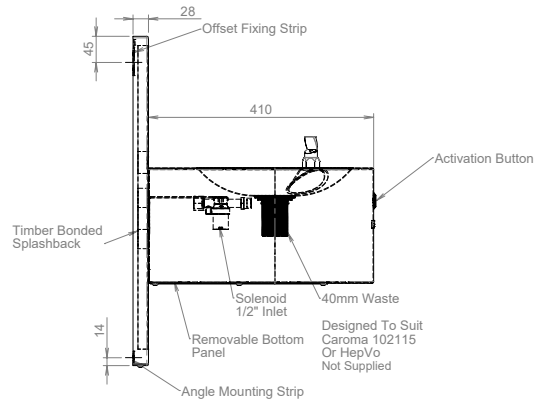
Suggested Bottle Filler Option:



**TW-BF-HF**  
Fixed Spout Bottle Filler Hob  
Mounted - Drink Safe™



MODEL DDR1-S Plan, Front Elevation and Side Elevation



MODEL DDR1-D Plan, Front Elevation and Side Elevation

*When specifying this product please include:*

specifying guide

- Product **Name** and **Code**
- Product **Dimensions**
- Product **Features**
- **Compact** or **Accessible** Model

options

- Compact or Accessible Model
- Refrigerated
- Additional Drink Safe™ Bottle Filler - TW-BF-HF
- Replacement Battery Unit for Electronic Activation Button: 74-08-0106

VISIT [BRITEX.COM.AU](http://BRITEX.COM.AU) TO DOWNLOAD BIM FILES, CAD DRAWINGS AND THE MOST CURRENT PRODUCT LITERATURE.

Last Revised Mar 2023 | Revision C