

D-TDW-A

Scan QR code to view our installation notes

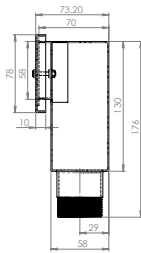
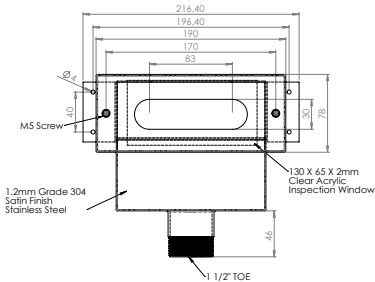
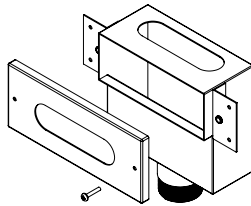
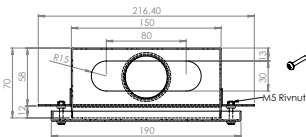


To order this item please advise:

- Model: D-TDW-A, D-TDW-B or custom
- Custom design requirements
- Grade of stainless: 304 or 316

Product Info:

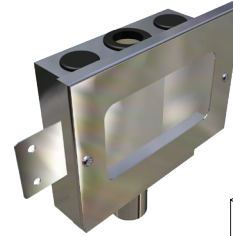
- Removable inspection window
- Standard and custom designs available
- Purpose built to specific applications
- Grade 304 or 316 stainless steel
- Quality components provides optimal durability



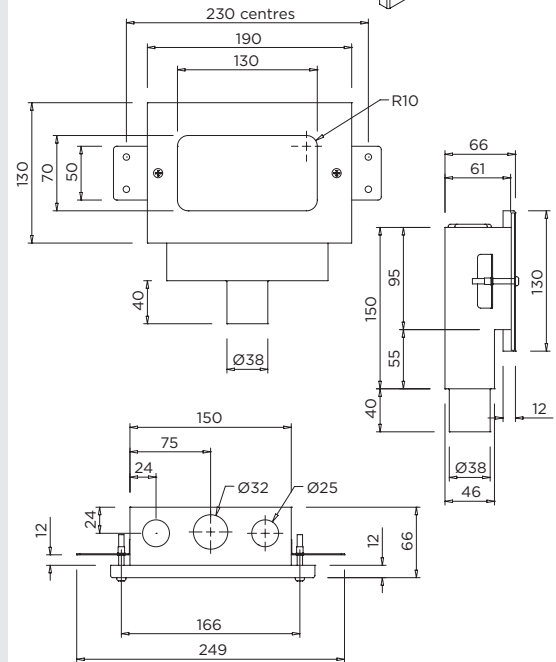
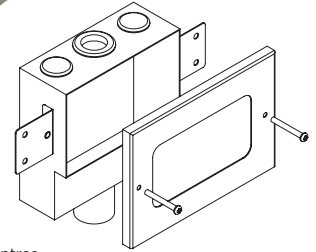
INSTALLATION NOTES

General: 1) Connection sizes, overall dimensions and configurations are fully customisable for every project. 2) A sealant should be applied around condensate/discharge wastes at point of entry into tundish and any entries not utilized.

Model D-TDW-A: supplied with a 40mm male thread connection.



D-TDW-B



INSTALLATION NOTES

Model D-TDW-B: supplied with plugs for 2 entries to prevent vermin from entering tundish if not utilized by pipe work. A 38mm spigot outlet is designed to connect to copper or PVC adaptor / slip coupling.