

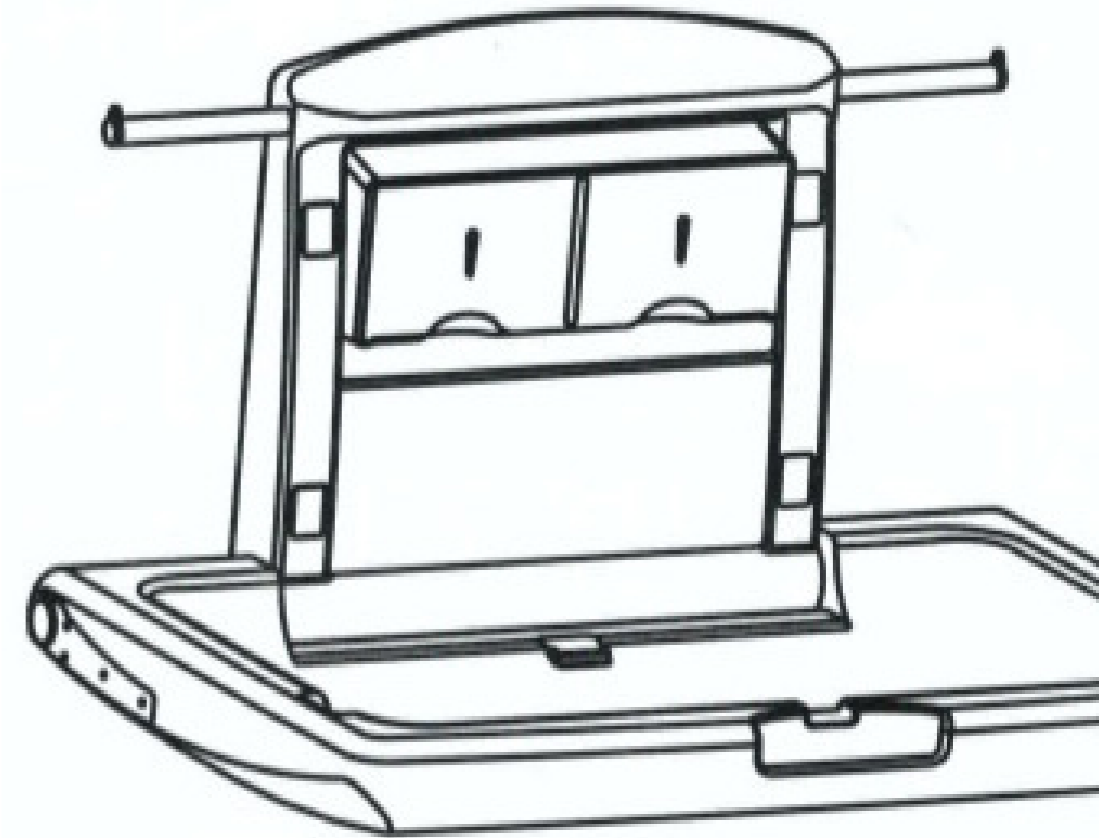
**BTX-09-014**

---

*Horizontal HDPE  
Baby Change Table*

---

**Installation  
Guide**



## About

The BRITEX Horizontal Baby Change Table possesses a high density bacteria resistant polyethylene body, stainless steel hinge and mounting bracket. The antibacterial HDPE interior further reduces the risk of contamination. An adjustable restraint belt is available for extra safety.

Choose from vertical or horizontal models.

### WARNING:

- Never leave the baby unattended to avoid serious injury from falling or sliding out.
- Always use the restraint belt when using the baby change table.
- Children are forbidden from hanging on the unit to avoid risk of falling.
- The total maximum recommended weight for this changing station is 20kg and babies up to 12 months. Excessive weight may create dangerous or unstable situations when in use.
- Designed for baby changing only, it is strictly forbidden to be used as an infant bed.

## Product features

### 1. Easy to use and hygienic

The baby changing unit is manufactured using antibacterial HDPE which helps reduce the risk of cross-contamination. A disposable liner or blanket can be set between the baby and the changing table.

### 2. Easy to open and close, space saving design

Foldable design provides space optimisation, closing the table when not in use.

### 3. Built-in paper dispenser

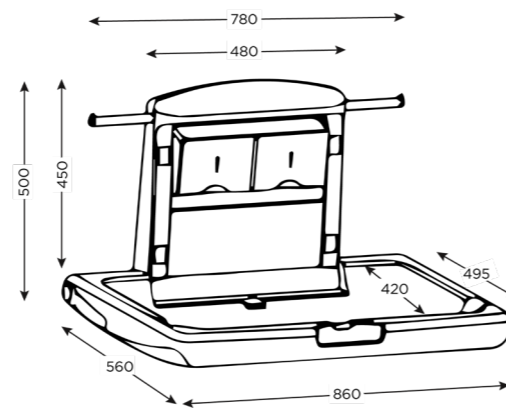
The unit includes a built-in paper dispenser to store liners or paper towels (by others)

### 4. Safety

Adjustable restraint belt fitted with click lock mechanism

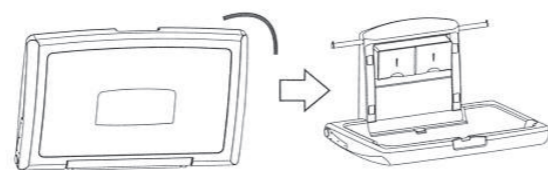
### 5. Product use

The unit can be used in hospitals, restaurants, hotels, shopping centres and public amenities.

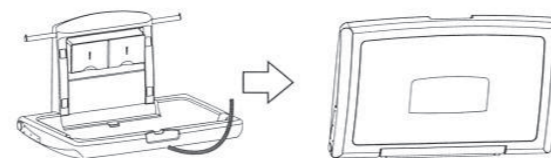


## Method of usage

1. Unfold the unit as shown on the right
2. Take a liner from paper holder (by others) and lay it on the table
3. Lay child in the centre of the changing table and clip together the ends of the restraint belt
4. After use, throw the liner into the bin and close table

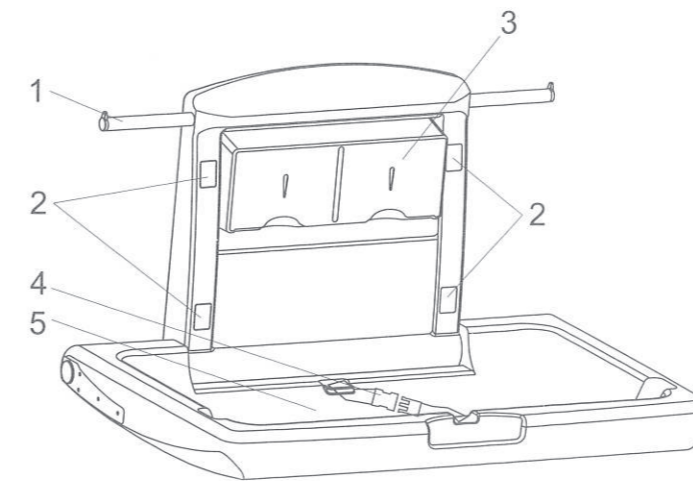


Open

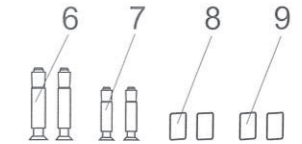


Close

## Parts and hardware



1. Hooks
2. Mounting holes
3. Paper holder
4. Restraint belt
5. Table
6. 120mm Screws
7. 100mm Screws
8. Screw caps (Up)
9. Screw caps (Down)



## Installation

