

# BRITEX

## CARE RANGE



# Contents

PG  
3

## **BRITEX CARE: Ready for Adaptability**

Introducing the Elsa Arm Rest - providing accessibility and independence to your bathroom.

PG  
5

## **Elsa Arm Rest for Independence and Falls Prevention**

The Elsa Arm Rest can help to prevent falls in the bathroom.

PG  
8

## **Elsa Arm Rest Foldable Assistive Toilet Arm Rest | AR-100**

Elsa Arm Rest Datasheet including Technical Drawings, Features and Benefits, Description and Install Guide.

PG  
9

## **Independent Living & Assisted Living Care Bathroom Kit**

Bathroom Product Solutions for the Independent or those requiring some care.

PG  
10

## **Ambulant Care Bathroom Kit**

Bathroom Product Solutions for Ambulant Toilet Cubicle (Comply to Australian Standard AS1428.1-2009, Amdt1-2010 Design for Access and Mobility.)

PG  
12

## **Accessible Care Bathroom Kit**

Bathroom Product Solutions for Accessible Toilet Cubicle (Comply to Australian Standard AS1428.1-2009, Amdt1-2010 Design for Access and Mobility.)

PG  
15

## **Mental Health and Security**

Product suggestions for the aging population in our security and mental health facilities.

# Britex Care

## *Ready for Adaptability - Future Proof Your Bathroom*

### **We make sense**

The Britex Care range of hygienic product solutions provide accessibility and independence to all bathroom amenities whether health, public, commercial or residential, to support the safety and well-being of people facing a loss or decline in independence.



**Elsa Arm Rest (AR-100) shown on Britex Ceramic Care Suite (BSW-BTWCS-800)**

# Britex Care

## *Ready for Adaptability - Future Proof Your Bathroom*

### **For Our Users - Comfort, Aesthetics & Safety**

Designed in Europe and Australia, the Britex Care Range is modern and user-centric for ease of use to provide the best possible comfort and support for accessible needs.

All our products are performance tested and the finest of details are considered in our designs such as rounded sides, ensuring no sharp edges to prevent the risk of cuts. Our tamper proof durable stainless steel designs further promote the feeling of safety and well-being when using our products.

### **For our Maintenance Managers - Low Maintenance, Hygienic Design & Material**

Our Britex Care product solutions are manufactured and designed to help our maintenance managers meet the highest standards of hygiene in sanitary spaces.

To assist with maximising hygiene and ease of cleaning of our products, our vitreous china solutions are fully glazed including in the rims and traps. While our stainless steel designs utilise the principle of minimal assembly whereby we limit seams and joints minimising dirt and bacteria deposit. Furthermore, our high quality uniform stainless steel finishes and surfaces not only create our aesthetic difference but also functionally contribute to ease of cleaning maintenance of both our products and the environments where they are used.

### **For Our Owners - Tamperproof Designs, Built-to-last**

Since our beginnings in 1938, Britex has steadfastly committed to our philosophy of continuous improvement in our business and our product solutions, with a sharp focus on deep understanding of our client needs and their ever-changing environments.

Our Britex Care range of product solutions meet user needs, are low maintenance and are long wearing, with minimised need for replacements or parts. It is our combined world-class stainless steel fabrication systems and our specialised tamper proof designs, that differentiate us from the rest. Our resulting product solutions remain performance ready, with minimal effects from any voluntary or involuntary tampering, to support the safety and wellbeing of our users, whilst delivering maximum savings and reliability to our owners.

### **For Our Environment: Minimal Waste, 100% Recyclable**

We take great care to minimise the impact of our stainless steel fabrication on our environment. Our fabrication consistently incorporate 65-80% recycled material and once the long service life of our products are complete, our stainless steel products are 100% recyclable.

# Elsa Arm Rest for Independence and Falls Prevention

Falls are a major health issue in the community with around 1 in every 3 adults over 65 experiencing at least one fall per year. Falls is the leading cause of injury related hospitalisation and accounts for 40% of injury related deaths in this age group.\*

The Elsa Arm Rest can help to prevent falls in the bathroom.



\*[www.anzfallsprevention.org](http://www.anzfallsprevention.org)





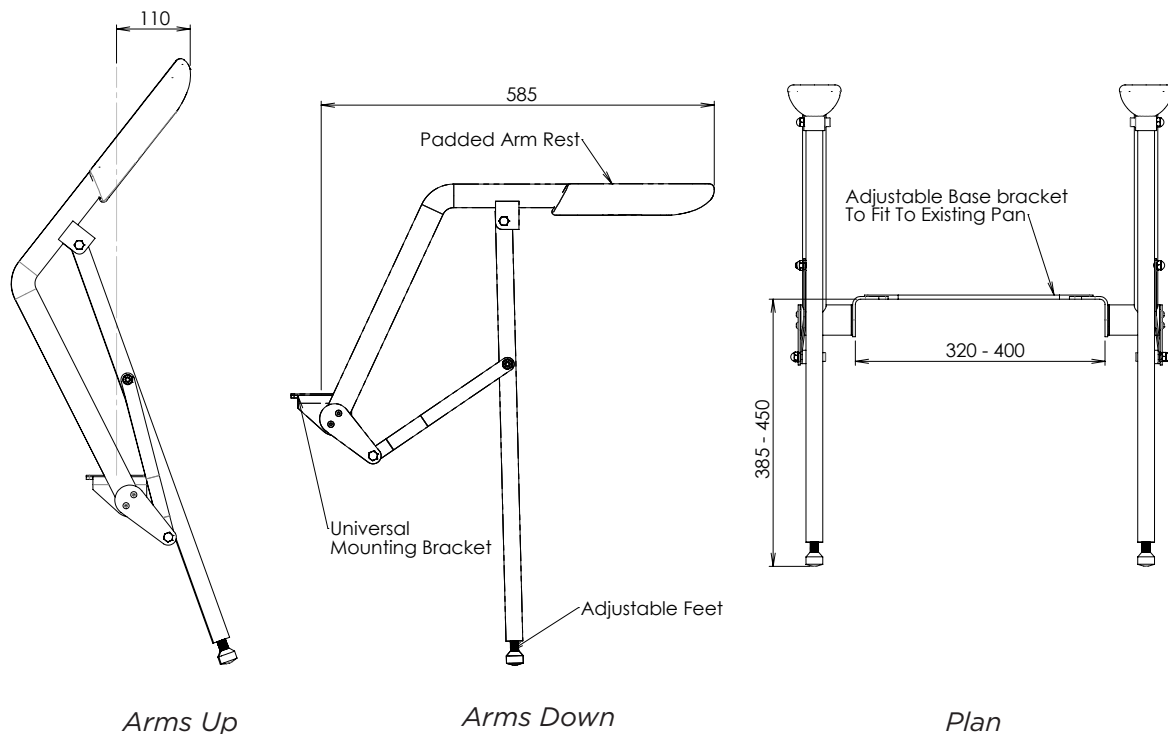


# ELSA ARM REST

## FOLDABLE ASSISTIVE TOILET ARM REST

PRODUCT CODE

# AR-100



### features and benefits

- **Self Installation:** Can be self installed on most toilets
- **Long Lasting, Cost Saving:** made from Durable, reliable stainless material
- **Foldable arms:** Arms can be folded up when not in use, to avoid obstruction
- **Intuitive to use:** Natural to use, much like the arm rest on a chair.
- **Strength:** 160kg weight loading capacity
- **No Wall Damage:** No wall damage to install or remove.

### about

The convenience of the Britex Elsa Arm Rest makes it an ideal comfort and safety accessory to future proof your independent living or assisted living bathroom, whether for temporary requirements or longer term use. The Elsa Arm Rest features foldable arms that can fold independently of each other to suit user and space requirements and the non slip comfort grip pads in a contrasting colour aide in visibility. The toilet roll holder may be installed on the left or right arm rest. An ideal solution for domestic, public or commercial bathrooms, the unit can be easily retrofitted to most toilet pans or suites in the market.

### install guide

1. Adjustability to enable a secure fit/installation on most WC's with installment base width range of 300mm to 420mm and mounting hole range from 86mm to 256mm over centre.
2. Easy assembly and retrofit installation, not requiring any re-work or re-enforcement of walls as per most grab bars.
3. Single installation inclusive of both Arm Rests vs. potential multiple installations if more than one grab bar is required around the toilet.

#### Maintenance:

- For precaution, installation bolts are recommended to be checked quarterly and if required, tightened.
- Elsa Arms Rests to be wiped clean with warm, soapy water.



# Independent Living & Assisted Living Care Bathroom Kit

*Bathroom product solutions for the independent or those requiring some care.*

We understand the importance of remaining independent for as long as possible. This suggested set allows for ready adaptability to future proof should we at any time face some loss of independence. For example, our toilets allow for the easy installation (and removal) of our foldable Elsa Care Arm Rest to assist with comfort and safety in the everyday use of our toilets and our basins can be used with or without cabinetry to suit users who prefer to be seated at the basin.

## BTX-ILKIT-100

### Toilet



**BSW-BTWTS-650**  
Britex Ceramic Back To Wall Toilet Suite

Fully glazed including in rim and trap for maximum hygiene.



**AR-100**  
Elsa Arm Rest

### Basin with Tapware



**BSW-WB550**  
Britex Ceramic Wash Basin



**TW-MIX-01**  
Fixed Flick Mixer

#### Product Notes:

Can be used with cabinetry or alone for ease of use.

Visual colour coding on tapware for ease of use.

### Shower



**BTR-01-062**  
Adjustable Height Shower with Grab Rail

#### Product Notes:

Shower rail doubles as a grab rail.

Visual colour coding on tapware for ease of use.

### Accessories



**BTX-06-050**  
Single Toilet Roll Holder Toilet Paper Dispenser



**BTX-10-035**  
Stainless Steel Double Robe Hook



**BTX-10-037**  
Heavy Duty Towel Rail

#### Product Notes:

High quality, durable, stainless steel coat hooks & towel rails.

## Additional Adaptability Options

### S.S. Grab Rails Straight Concealed

DIAMETER 32 (All Codes)

Sizes range from 300mm to 2400mm



BTR code	length	BTR code	length
BTR-01-038	300 mm	BTR-01-045	1000 mm
BTR-01-039	350 mm	BTR-01-046	1200 mm
BTR-01-040	400 mm	BTR-01-047	1500 mm
BTR-01-041	450 mm	BTR-01-048	1800 mm
BTR-01-042	600 mm	BTR-01-060	2100 mm
BTR-01-043	750 mm	BTR-01-061	2400 mm
BTR-01-044	900 mm		

## Foldable Shower Seat

### BTX-11-027

OVERALL SIZE W 355 x D 315mm

13mmT White Compact Laminate Single Piece Seat with Black Edging & Drainage Slots



# Ambulant Care Bathroom Kit

Comply to Australian Standard AS1428.1-2009, Amdt1-2010 Design for Access and Mobility.

## Bathroom product solutions for Ambulant Toilet Cubicle

From the 1 May 2011 the Building Code of Australia/Premises Standards now state that where there are standard toilets, in addition to a required accessible unisex toilet at any bank of toilets, a compartment suitable for use by a person with an ambulant disability must also be provided for use by males and females.

At Britex Care we have done the work with our Ambulant Care Bathroom Kit to ensure you satisfy AS1428.1 2009 Clause 16 requirements for Sanitary Compartments for people with Ambulant Disabilities.

## BTX-VRAMB-100 Ceramic Toilet Option w Elsa Arm Rest

### Toilet



**BSW-WM-AMB-PCB\***  
Britex Ceramic Wall Mounted Ambulant Pan with Chair Bracket



**FIW-M**  
In Wall Cistern with Mechanical Buttons



**AR-100**  
Elsa Arm Rest

### Grab Rail



**BTR-01-058 x 2**  
Left or Right Hand Ambulant Grab Rail

### Braille Signage



**BTX-02-161**



**BTX-02-163**  
Compliant Braille Signs

### Accessories



**BTX-10-035**  
Stainless Steel Double Robe Hook



**BTX-06-060**  
S.S. Contour Double Roll Toilet Paper Dispenser

\*Ambulant Wall Mounted Pan is supplied with open toilet seat and must be mounted at 465mm from floor level to be compliant

## BTX-SSAMB-100 S/S Toilet Option w Elsa Arm Rest

### Toilet



**PCAM-SVRC-B**  
Britex Stainless Steel Centurion Ambulant Pan



**FIW-D**  
In Wall Cistern with Accessible Raised Buttons (Remote Installation)



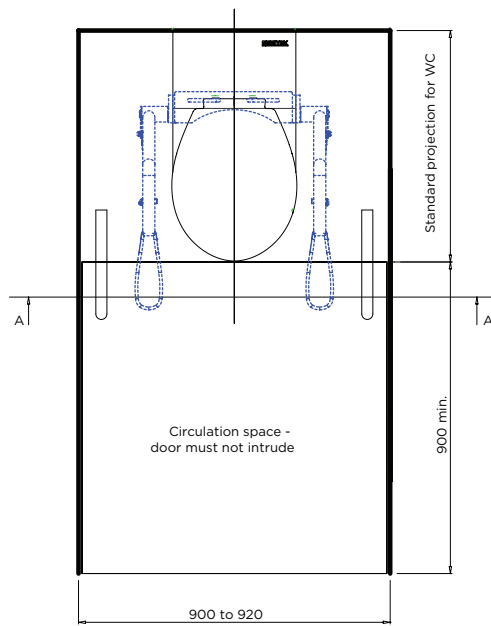
**AR-100**  
Elsa Arm Rest



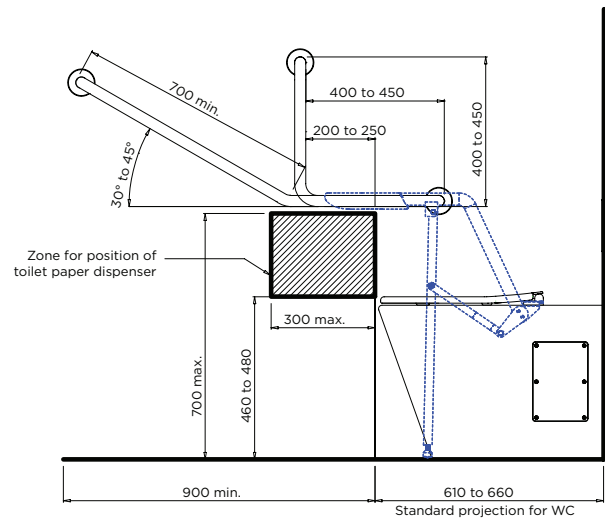
**SAME GRAB RAIL, BRAILLE SIGNAGE & ACCESSORIES PACKAGE AS KIT BTX-VRAMB-100 (above)**

# Ambulant Care Bathroom Kit

*Ambulant Sanitary Compartment set-up AS1428.1 Amdt1-2010*



PLAN



ELEVATION

For some users, the width of the ambulant cubicle and distance of the grab rails may be too far for safe use to self-leverage. In these instances, users may be at risk of falling. We suggest the addition of our foldable Elsa Arm Rest as an addition to satisfying AS1428,1 requirements and to assist with minimising falls inside the ambulant cubicle.

## Hand Hygiene Wash Station Kit

At Britex Care, we understand the importance of hand hygiene to minimise cross-contamination in the care and health environments. This is why we have paid attention to create a Hand Hygiene Wash Station Kit inclusive of a large basin to allow thorough washing up to the elbows and a shape design that importantly, minimises splashing. And, we have selected a handsfree operation tap which aims the water to the front of the basin rather than direct into the drain to minimise disturbance of any reservoir of infectious agents in the drain. Be confident of your hand hygiene with Britex Care Hand Hygiene Wash Station Kit, complete with basin bottle trap and paper and soap dispenser.

### BTX-HHWS-100 Hand Hygiene Wash Station Kit



**BSW-AB650**

Accessible Ceramic  
Contoured Hand Basin



**TW-G-185**

Curved Sensor Tap  
with Power Generator



**BTRAP**

Bottle Trap



**BTX-04-014**

S.S. Contour Paper  
Towel Dispenser



**BTX-05-034**

Automatic S.S. Soap  
Dispenser w S.S. Casing

# Accessible Care Bathroom Kit

Comply to Australian Standard AS1428.1-2009, Amdt1-2010 Design for Access and Mobility.

## Bathroom Product Solutions for Accessible Toilet Cubicle

Our Britex Accessible Care Bathroom Kit is the complete product solution to meet AS1428.1 Sanitary Compartment requirements for the Toilet cubicle and the Toilet/Shower bathroom. In this range are ceramic and stainless steel toilet and basin options to suit the bathroom requirements of aged care and health facilities as well as public bathrooms in vandal risk areas.

### BTX-VCACC-100

Ceramic Toilet Option w Elsa Arm Rest

#### Toilet



**BSW-BTWCS-800**  
Britex Ceramic Care Suite

#### Backrest



**BTX-BR-S**  
Straight Arm  
Polyurethane Backrest

#### Basin with Tapware



**BSW-AB800**  
Britex Accessible Ceramic  
Hand Basin with Right Hand Shelf

#### Grab Rail



**BTR-01-014**  
Side Wall & Cistern Grab Rail  
Available in Left (shown) or Right  
Configuration (BTR-01-016)

#### Accessories



**AR-100**  
Elsa Arm Rest



**BTX-07-031**  
Compliant Mirror



**BTX-04-012**  
Paper Towel  
Dispenser



**BTX-05-022**  
Soap Dispenser



**BTX-06-060**  
S.S. Contour Double Roll  
Toilet Paper Dispenser

## AS1428.1 2009 Compliant Shower Accessories

#### Shower



**BTR-01-062**  
Adjustable  
Height Shower  
with Grab Rail



**TW-MIX-21**  
Chrome Plated  
Single Lever  
Mixer Hot/Cold

#### Shower Seat



**BTX-11-014**  
Foldable  
Shower Seat

#### Grab Rail



**BTR-01-043**  
Grab Rail Straight  
Concealed  
(750mm length)

#### Accessories



**BTX-10-035 x 2**  
Stainless Steel Double  
Robe Hook



**BTX-10-010**  
Shelf

# Accessible Care Bathroom Kit

Comply to Australian Standard AS1428.1-2009, Amdt1-2010 Design for Access and Mobility.

Anti Vandal Bathroom Product Solutions for Accessible Toilet Cubicle

## BTX-SPACC-100

S/S Toilet Option w Elsa Arm Rest

### Toilet



**PCD-SVRC-B**  
Britex Stainless Steel  
Centurion Accessible Pan



**FIW-D**  
In Wall Cistern with  
Accessible Raised Buttons  
(Remote Installation)



**AR-100**  
Elsa Arm Rest

### Backrest



**BTX-BR-D-VR**  
Drop Down Stainless  
Steel Backrest

### Basin with Tapware



**HBDA**  
Accessible Hand Basin



**TW-G-185**  
Curved Sensor Tap  
with Power Generator

### Grab Rail & Accessories

**SAME GRAB  
RAIL &  
ACCESSORIES  
PACKAGE  
AS KIT  
BTX-VCACC-100**

+



**BTX-10-010**  
Shelf

## BTX-SSACC-100

S/S Toilet Suite Option w Elsa Arm Rest

### Toilet



**PTSDC-SVRC-B**  
Britex Accessible  
Toilet Suite



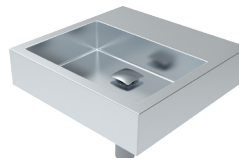
**AR-100**  
Elsa Arm Rest

### Backrest



**BTX-BR-D-VR**  
Drop Down Stainless  
Steel Backrest

### Basin with Tapware



**HBBEL-D**  
Accessible Bellagio Basin



**BTRAP**  
Bottle Trap



**TW-9103**  
Timed Flow Lever  
Pillar Tap

### Grab Rail & Accessories

**SAME GRAB  
RAIL &  
ACCESSORIES  
PACKAGE  
AS KIT  
BTX-VCACC-100**

+



**BTX-10-010**  
Shelf

# Accessible Care Bathroom Kit

Figure 38 of AS1428.1 2009 Amendment: WC Pan Clearances

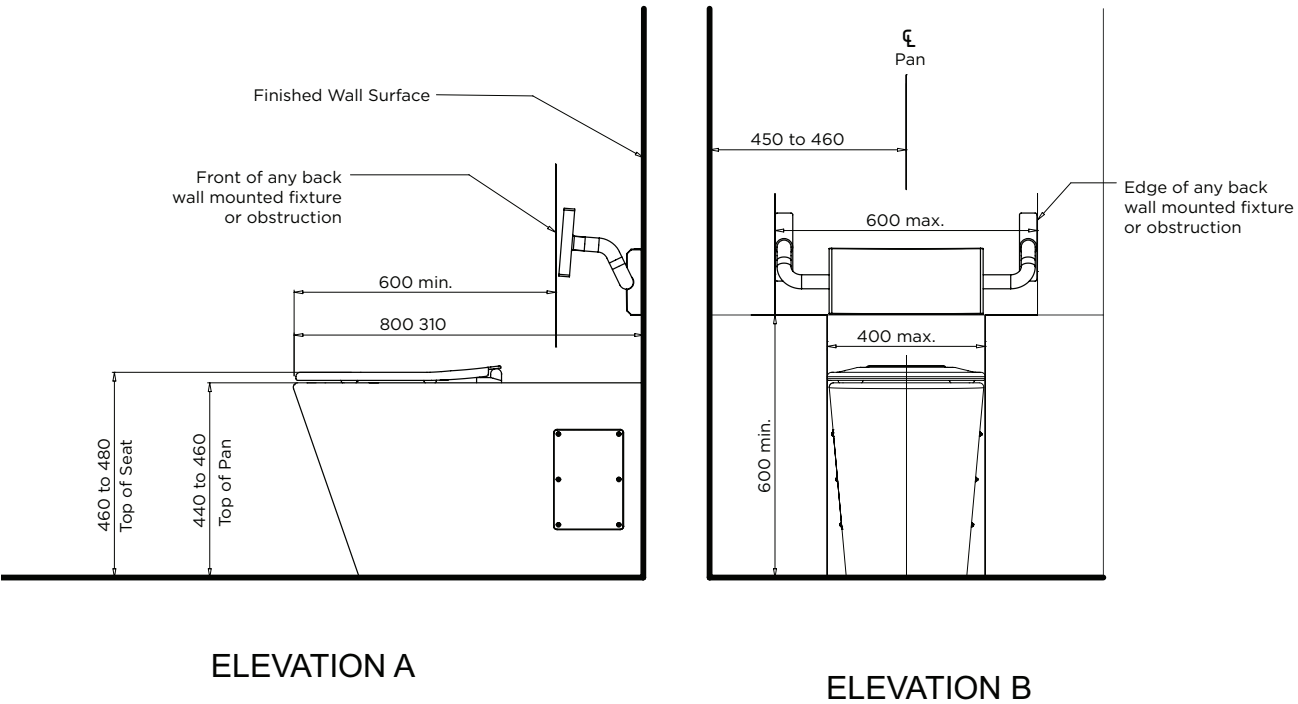
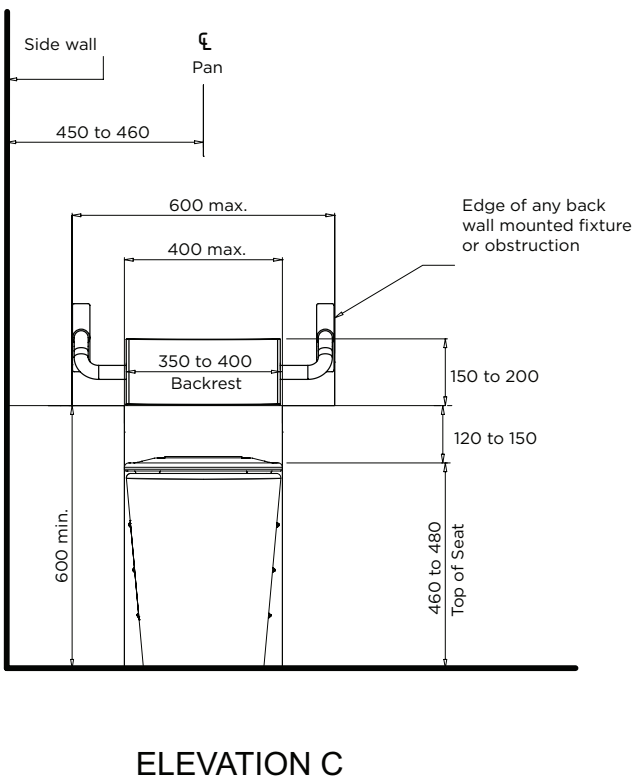


Figure 39 of AS1428.1 2009 Amendment: Water Closet Installation



In the instances where support arms are required for additional safety we can provide the option of our foldable Elsa Arm Rest as an addition to AS1428.1 requirements.



**AR-100**  
Elsa Arm Rest



# Mental Health and Security

We acknowledge the aging population in our security facilities and the potential risk of vandalism and self harm in those facilities and in some mental health settings. For these facilities we have taken great care to develop anti-ligature grab bars and anti-vandal basins and toilets suitable for people with disabilities and/or facing a loss of physical independence.

Product Code:

**PGD-WPC**



## Accessible Grandeur Toilet Pan White Powder Coat

4\* WELS. Wall faced stainless steel pan with integral pressed seat area and safety radius front edge. White Powder Coated.

### **Specification Text\***

BRITEX S.S. Grandeur Toilet Pan - 4\* WELS rating and WaterMark certified. **S/P** Trap, 14mm safety radius front edge, fully shrouded to rear wall and 2 x access panels. - Product Code **PGS/P - WPC White Powder Coat Option**

Product Code:

**PBAR-WPC**



## Bariatric Pan with Seat White Powder Coat

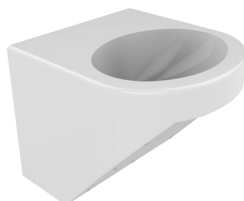
The BRITEX Bariatric Pan is a specially designed floor standing toilet and is fitted with a seat that is dedicated for bariatric users.

### **Specification Text\***

BRITEX S.S. Bariatric Pan - Complete with Approved Bariatric Toilet Seat - Product Code **PBAR-S/P - WPC White Powder Coat Option**

Product Code:

**HBDA-WPC**



## Accessible Hand Basin White Powder Coat

Compliant with AS1428. Vandal resistant wash basin with safety radius fascia, fully welded seamless construction and choice of optional tapware.

### **Specification Text\***

BRITEX S.S. Disabled Hand Basin - 440 x 470 x 380D O/A. Supplied complete with rolled safety fascia, access panel, mounting bracket and 40mm waste outlet. AS1428 compliant - Product Code **HBDA WPC White Powder Coat Option**

Product Code:

**BTX-AL-90**



## Anti Ligature Grab Rail

Britex Anti-Ligature Grab Rails are manufactured from heavy gauge grade 304 S.S. and are ideally suited to jails, detention centres and mental health facilities. These suicide resistant grab rails prevent self-harm with a sloped capped off end for maximum ligature resistance. Available in stock sizes.

### **Specification Text\***

BRITEX S.S. Anti Ligature Grab Rail - 900mm Long Product Code **BTX-AL-90**

Product Code:

**BTX-10-032**



## Collapsible Coat Hook

Suicide and tamper resistant coat/towel hook. Hook with pivot-ball base will collapse when more than 12kgs (nominal) of weight is applied. Fully welded construction, made from satin finish grade 304 stainless steel.

### **Specification Text\***

BRITEX S.S. Collapsible Coat Hook - 108mm x 108mm Product Code **BTX-10-032**

Product Code:

**TW-SEC-01**



## Timed Flow Push Button Basin Set - Cold Only

Highly vandal resistant tapware designed specifically for use in conjunction with BRITEX basins, sinks and showers in correctional facilities.

### **Specification Text\***

BRITEX Timed Flow Push Button Basin Set Cold Only - Product Code **TW-SEC-01**

