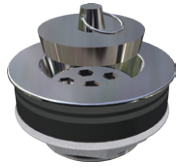


TWIN END BOWL LABORATORY SINK

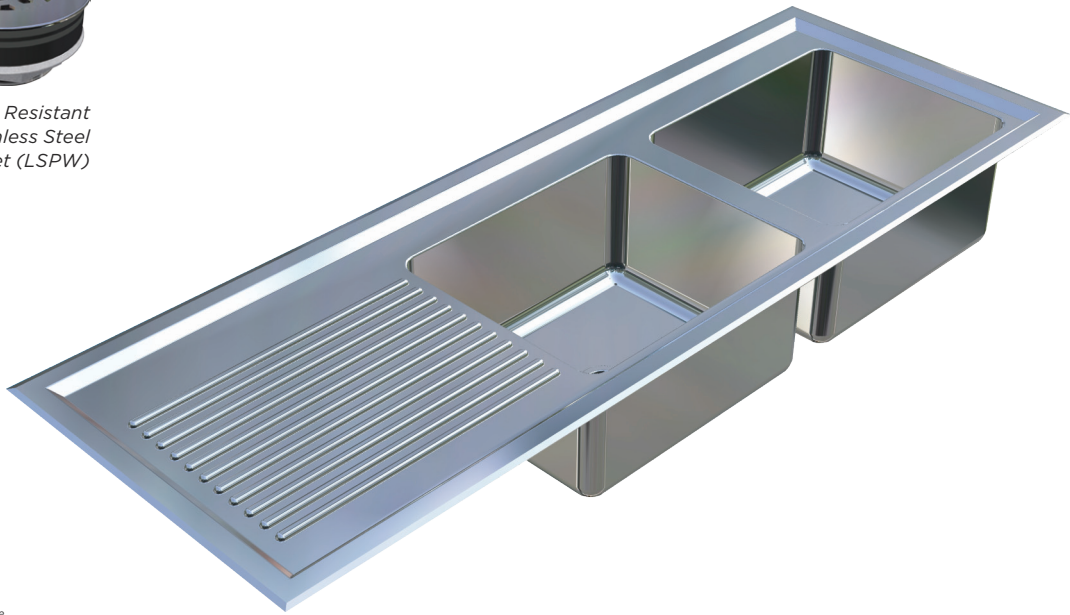
7.05

COMMERCIAL SINKS

#LSTEB / LABORATORY SINK - TWIN END BOWL



Optional Acid Resistant
Grade 316 Stainless Steel
Waste Outlet (LSPW)



Scan QR code
to view online



Image shows Model LSTEB-1200R

1200mm long Twin End Bowl Laboratory Sink with right hand bowls

features and benefits

- Standard and custom sizes available
- Twin bowl, single drainer
- Optional WaterMark certified S.S. waste
- Will not crack or chip
- Corrugated drainer
- Radius internal bowl corners
- 50mm centre waste
- Grade 316 acid resistant S.S.
- Optional grade 304 S.S. for domestic applications
- Optional laboratory tapware
- Optional flat drainer board
- Suits school science rooms and laboratories

about

BRITEX Stainless Steel Twin End Bowl Lab Sinks are fully custom fabricated using 1.2mm grade 316 acid resistant stainless steel. They are supplied with corrugated drainer and optional WaterMark certified grade 316 stainless steel waste outlets (LSPW). They can also be made in grade 304 stainless steel and used in domestic or light commercial projects. Radiused internal bowl corners ensure cleaning is easy and tap holes are supplied to suit specified tapware. Ideal for school science rooms and laboratories. Can be supplied with laboratory tapware if required (see reverse page for tapware options).

sample spec. text

BRITEX grade 316 Stainless Steel Twin End Bowl Lab Sink - 1500L x 500W O/A. Right hand bowls to be REB3. Complete with corrugated drainer and 50mm WaterMark certified grade 316 S.S waste outlets (LSPW) and XXXX tapware - Product Code LSTEB-1500R

*RED TEXT may denote a variable where one option only is to be selected, a nominal dimension that needs to be specified, or an optional feature that can be removed if not required. Please refer to the back of this page for additional specification details and options.

VISIT BRITEX.COM.AU TO DOWNLOAD BIM FILES, CAD DRAWINGS AND THE MOST CURRENT PRODUCT LITERATURE.



MELBOURNE
Britex Place, Mirra Crt
Bundoora VIC 3083
t (03) 9466 9000
f (03) 9466 9044

SYDNEY
16 Northumberland Drv
Taren Point NSW 2229
t (02) 9531 2100
f (02) 9531 2800

PERTH
Unit 1/8 Principal Link
Malaga WA 6090
t (08) 9249 5464
f (08) 9248 6893

BRISBANE
19 Manila St
East Brisbane QLD 4169
t (07) 3363 2400
f (07) 3363 2444

ADELAIDE
The Britex Group
SA State Office
t 1300 764 744
f 1300 784 306

britex.com.au | info@britex.com.au | A.B.N 83 004 309 737

TWIN END BOWL LABORATORY SINK

PRODUCT CODE

LSTEB

HOW TO SPECIFY: Twin End Bowl Laboratory Sink

Standard Size Sink Codes

All supplied with space for tap holes behind bowl, REB3 bowls and 50mm grade 316 S.S. waste outlets
LSTEB-1500L - 1500L x 500W. Left hand bowls.
LSTEB-1500R - 1500L x 500W. Right hand bowls.
LSTEB-1800L - 1800L x 500W. Left hand bowls.
LSTEB-1800R - 1800L x 500W. Right hand bowls.

Custom Size Sink Code

LSTEB - Fully custom made. Specify sink length, width and bowl size.

NB: If sinks require integrated tap holes behind bowl, add 150mm to bowl size to calculate overall sink width.

E.g. If bowl is 450 Long x 350 Wide, overall sink width will be 500mm. If no tap holes are required, add only 100mm.

Standard REB (Raw Edge Bowl) Sizes:

REB1	400L x 400W x 300 D
REB2	450L x 450W x 300 D
REB3	450L x 350W x 250 D
REB4	500L x 500W x 300 D
REB5	600L x 450W x 300 D
REB6	380L x 330W x 150 D

Suggested Tapware:

(see Tapware Section: 11 for complete range of options)



TW-LBSET-01A



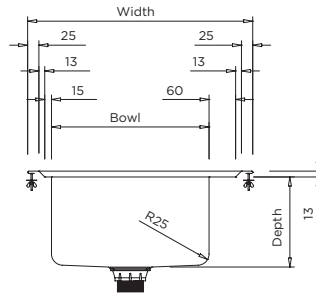
TW-LBSET-04



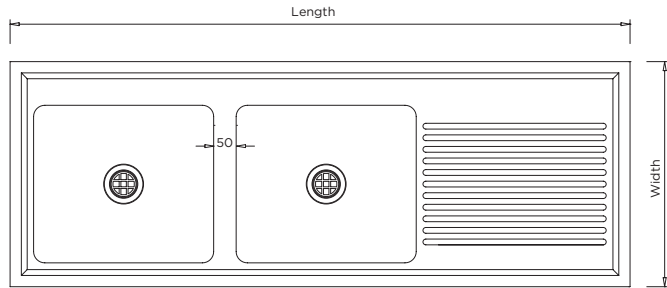
TW-LBSET-06



TW-LBSET-08



MODEL LSTEB Section



MODEL LSTEB Plan

When specifying this product please include:



- Product **Name** and **Code**
- Product **Features**
- Product **Dimensions**
- **Waste Outlet Type** (polypropylene or stainless steel)
- **Tapware** details (if required)



- Grade 316 S.S. Waste - LSPW: p 7.07
- Custom sizes
- Laboratory grade 316 or standard grade 304 S.S. sink
- Laboratory tapware
- Flat drainer section (no corrugations)

VISIT BRITEX.COM.AU TO DOWNLOAD BIM FILES, CAD DRAWINGS AND THE MOST CURRENT PRODUCT LITERATURE.



Due to ongoing research and our commitment to product development, details are subject to change without notice. Details accurate at time of print. Please refer to britex.com.au for the most current product information. Allow +/- 5mm tolerance for dimensions and setouts shown in product literature.

britex.com.au | info@britex.com.au | A.B.N 83 004 309 737

