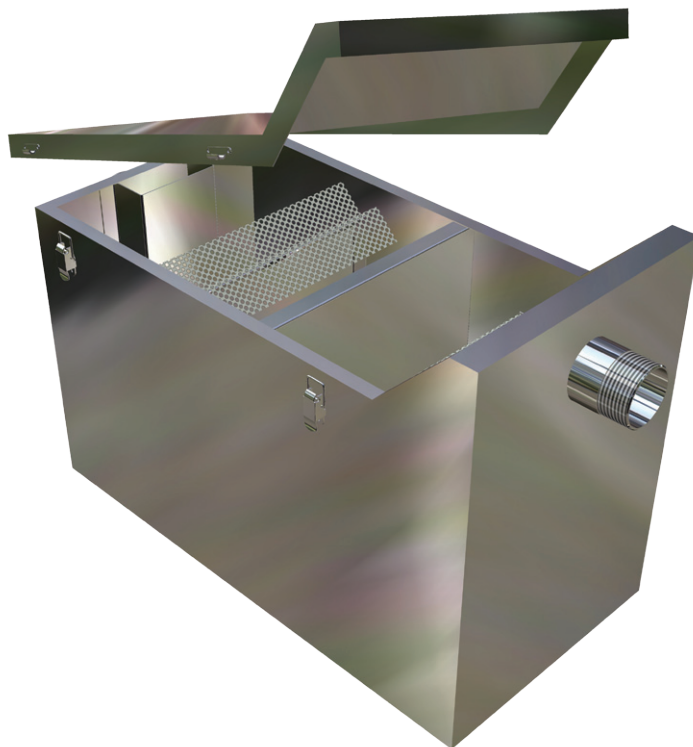


PLASTER & CLAY ARRESTOR

5.02

TANKS & DRAINAGE

#OSPC / PLASTER & CLAY ARRESTOR



Scan QR code
to view online



features and benefits

- Prevents solid waste entering plumbing
- Easy to clean removable capture box
- Lid secured by quick release clips
- Airtight lid sealed by internal gasket
- 44 litre capacity
- Installed above ground
- Custom sizes available
- Compatible with BRITEK Clay and Ablution Troughs (TCA/TCAI)
- Used in education, medical and art projects

about

The *BRITEK Plaster & Clay Arrestor* is manufactured from 1.2mm grade 304 stainless steel. This unit is generally used in medical facilities, art rooms and studios or wherever solids are combined with liquids. This tank controls solid particles by filtering solids through a solids capture box, baffles and perforated sheet filter screens and the lid is secured by quick release clips. Available in custom and standard sizes as required.

sample spec. text

BRITEK grade 304 S.S. Plaster and Clay Arrestor - 594L x 312W x 424H O/A. 44 Litre capacity. Lid to be removable with quick release clips. Complete with removable solids capture box and outlet skimmer box. - Product Code OSPC

*RED TEXT may denote a **variable** where one option only is to be selected, a **nominal dimension** that needs to be specified, or an **optional feature** that can be removed if not required. Please refer to the back of this page for additional specification details and options.

VISIT BRITEX.COM.AU TO DOWNLOAD BIM FILES, CAD DRAWINGS AND THE MOST CURRENT PRODUCT LITERATURE.



MELBOURNE
Britex Place, Mirra Crt
Bundoora VIC 3083
t (03) 9466 9000
f (03) 9466 9044

SYDNEY
16 Northumberland Drv
Taren Point NSW 2229
t (02) 9531 2100
f (02) 9531 2800

PERTH
Unit 1/8 Principal Link
Malaga WA 6090
t (08) 9249 5464
f (08) 9248 6893

BRISBANE
19 Manilla St
East Brisbane QLD 4169
t (07) 3363 2400
f (07) 3363 2444

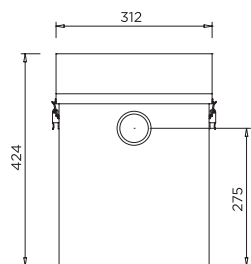
ADELAIDE
The Britex Group
SA State Office
t 1300 764 744
f 1300 784 306

britex.com.au | info@britex.com.au | A.B.N 83 004 309 737

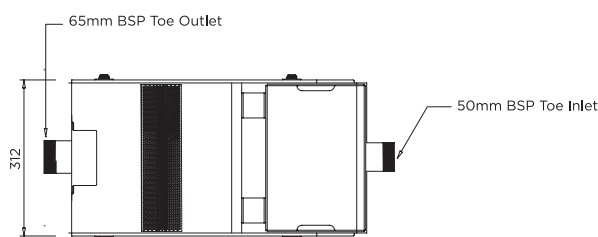
PLASTER & CLAY ARRESTOR

PRODUCT CODE

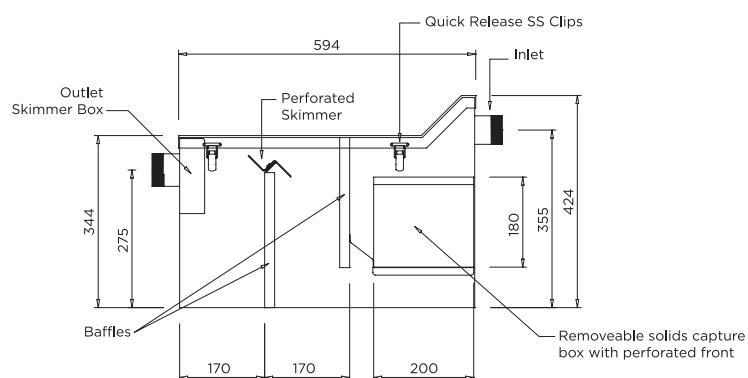
OSPC



MODEL OSPC Front Elevation



MODEL OSPC Plan



MODEL OSPC Side Elevation

specifying
guide

When specifying this product please include:

- Product **Name** and **Code**
- Product **Dimensions**
- Product **Features**

options

- Grade 304 or 316 stainless steel
- Custom capacity and dimensions
- Base with castors

VISIT BRITEX.COM.AU TO DOWNLOAD BIM FILES, CAD DRAWINGS AND THE MOST CURRENT PRODUCT LITERATURE.