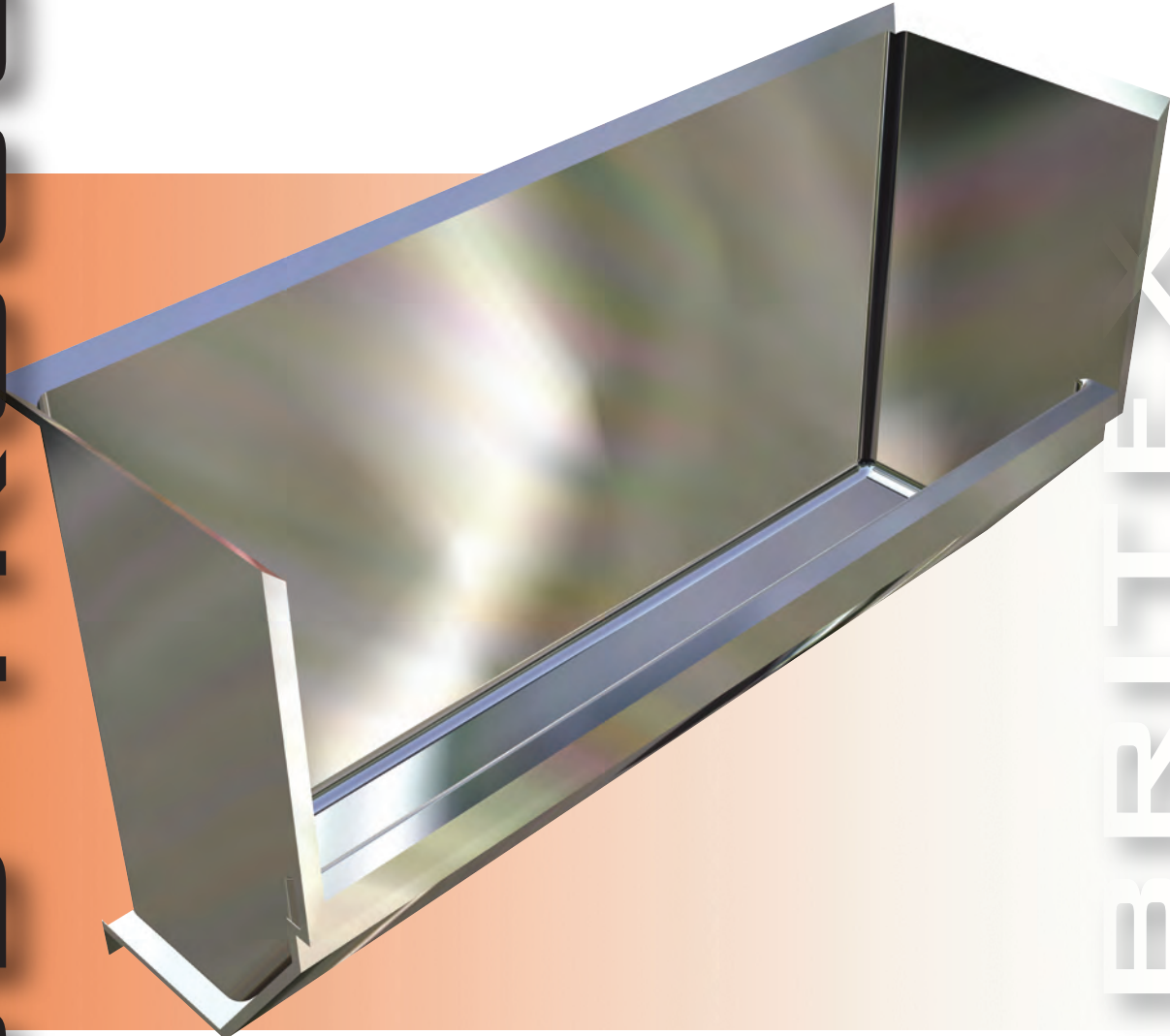


SCRUB TROUGHS

FEATURES;

- 1.2mm, grade 304 or 316 stainless.
- Neat, simple design.
- Left or Right hand outlets.
- Available with tapholes to suit breech or sensor.
- Available in custom lengths.



BRITEX

TST

BRITEX Surgeon's Scrub Troughs are fabricated from 1.2mm type 304 or type 316 acid resisting stainless steel and come in a satin finish. They are available with upstands to each end, (between walls), or with upstand to rear only. They are available in either Left or Right hand outlets, and tapholes can be configured to suit standard breech or sensor activated tapware.

