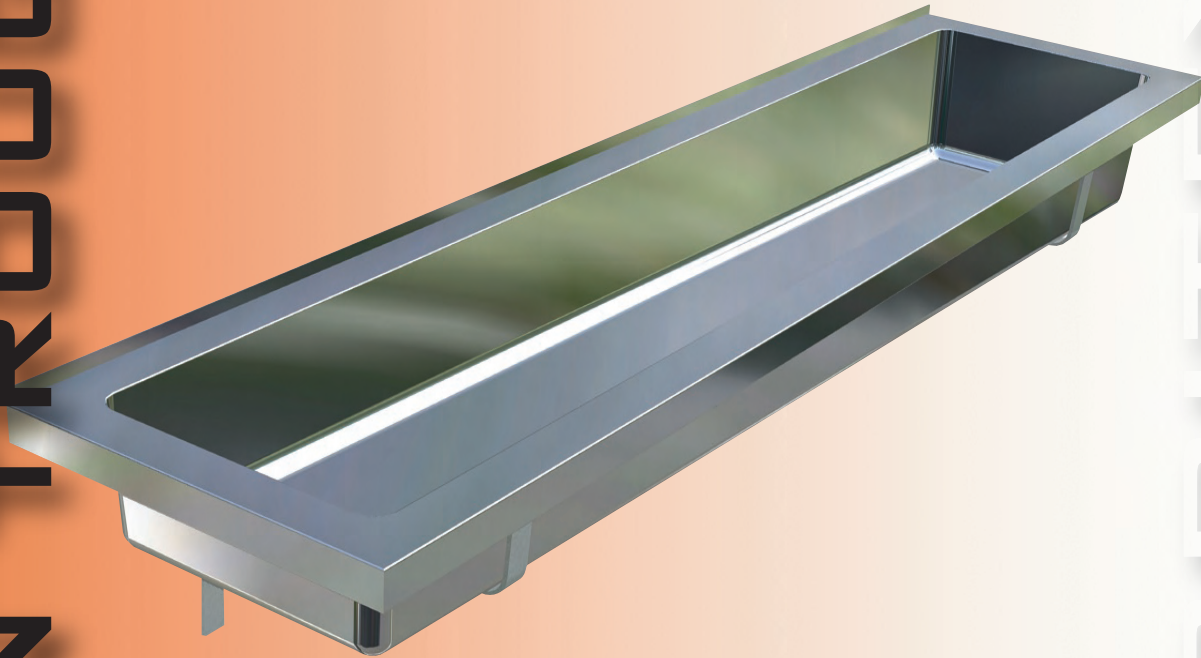


# PATTERN TROUGH NO.7

## FEATURES;

- Radiused Internal Corners.
- Available with brackets.
- Available in inset (flat rim) style.
- Optional left or right hand waste.
- Ideal for schools, kindergartens, amenities areas, sports pavilions.



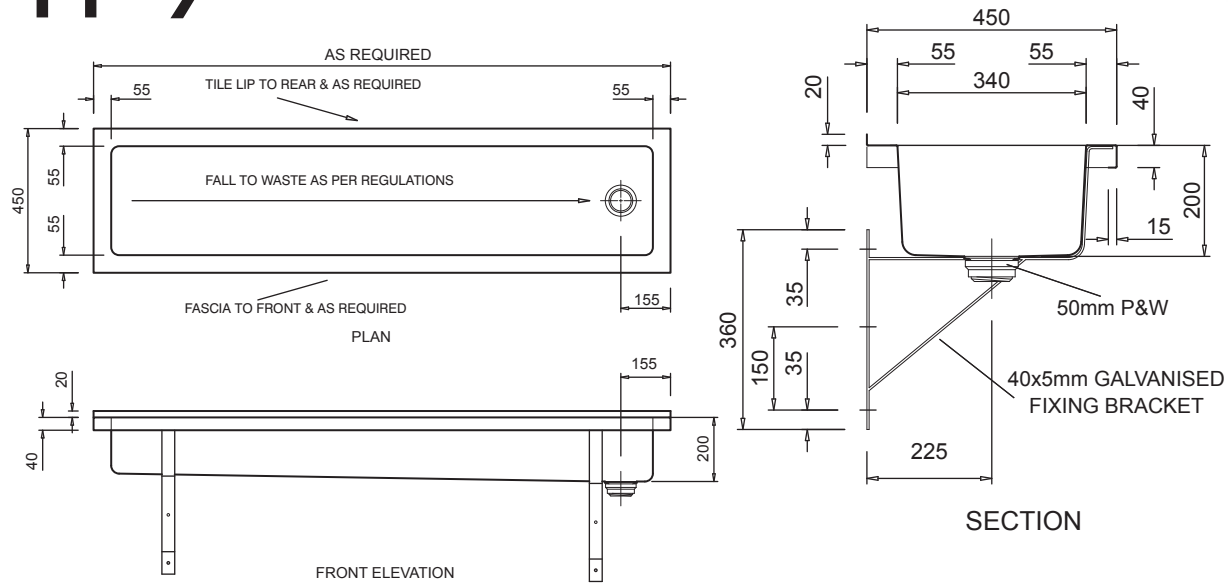
BRITEX

TP7

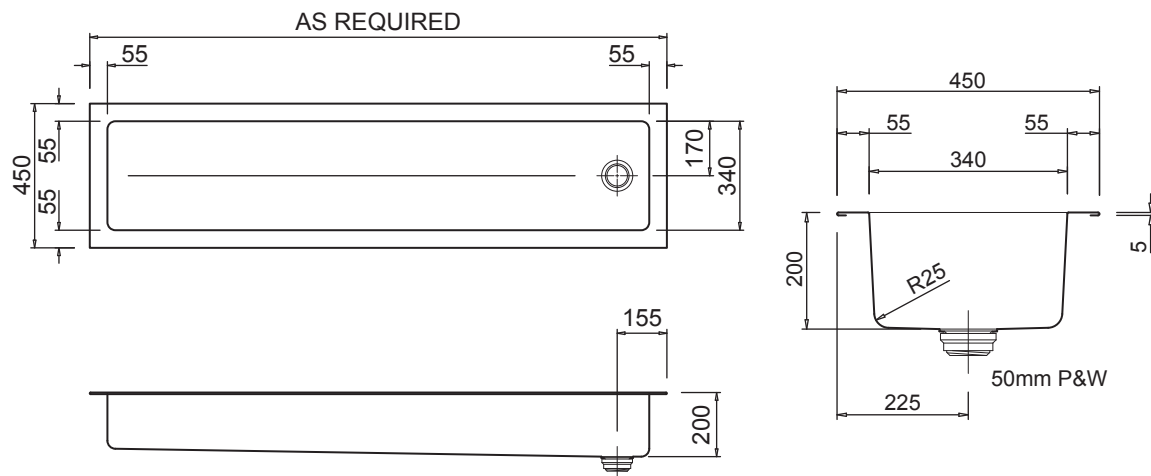
The **BRITEX Pattern Trough No.7**, (also known as W.A. Practical Trough), is manufactured from 1.2mm type 304 stainless steel. This unit is fully welded with radiused internal corners. A 50mm hob at the rear allows for plumbing to be concealed behind the trough. The **TP7** is available with heavy duty wall brackets.

PRODUCT CODE:

## TP7



MODEL: TP7F (FASCIA STYLE)



MODEL: TP7I (INSET STYLE)

## SPECIFICATIONS.

When specifying this product, please include the following details;

- Product **Name** and **Model No.**
- Product **Waste** Position - (Left or Right).
- Product **Dimensions.**

## OPTIONS.

- Inset or Fascia styles.
- Legs with Fascia styles.

**Melbourne**

Britex Place, Mirra Court  
Bundoora  
Victoria 3083  
Telephone 1300 764 744  
Fax (03) 9466 9044

**Sydney**

Unit 11, 16-18 Northumberland Rd  
Taren Point  
New South Wales 2229  
Telephone 1300 764 744  
Fax (02) 9531 2800



**BRITEX** SINCE 1938  
STAINLESS STEEL FABRICATED PRODUCTS

[www.britex.com.au](http://www.britex.com.au)

e-mail [info@britex.com.au](mailto:info@britex.com.au)

A.B.N. 83 004 309 737

Represented in all states of Australia, throughout Asia and the Pacific Regions.

All product manufacturing by **BRITEX** can be adapted to suit your special application.

Allow 5mm tolerance for setout dimensions given in these drawings. Details accurate at time of print.

As **BRITEX** is always committed to improving on design and quality, it is possible that some details may alter without notice.