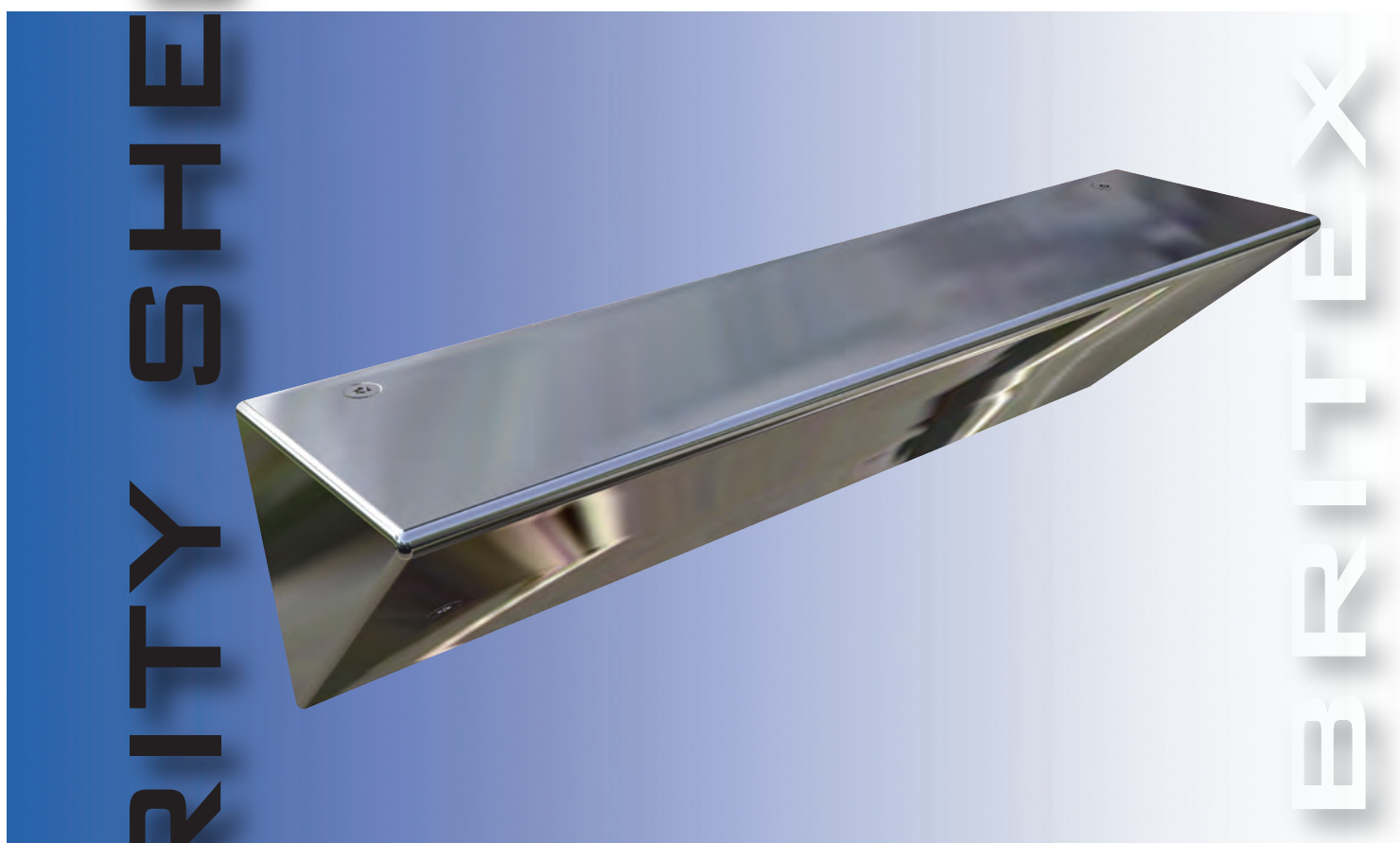


SECURITY SHELVING

FEATURES;

- Vandal proof design.
- Radiused edges.
- No ligature points.
- Contraband-proof.
- Concealed fixings.



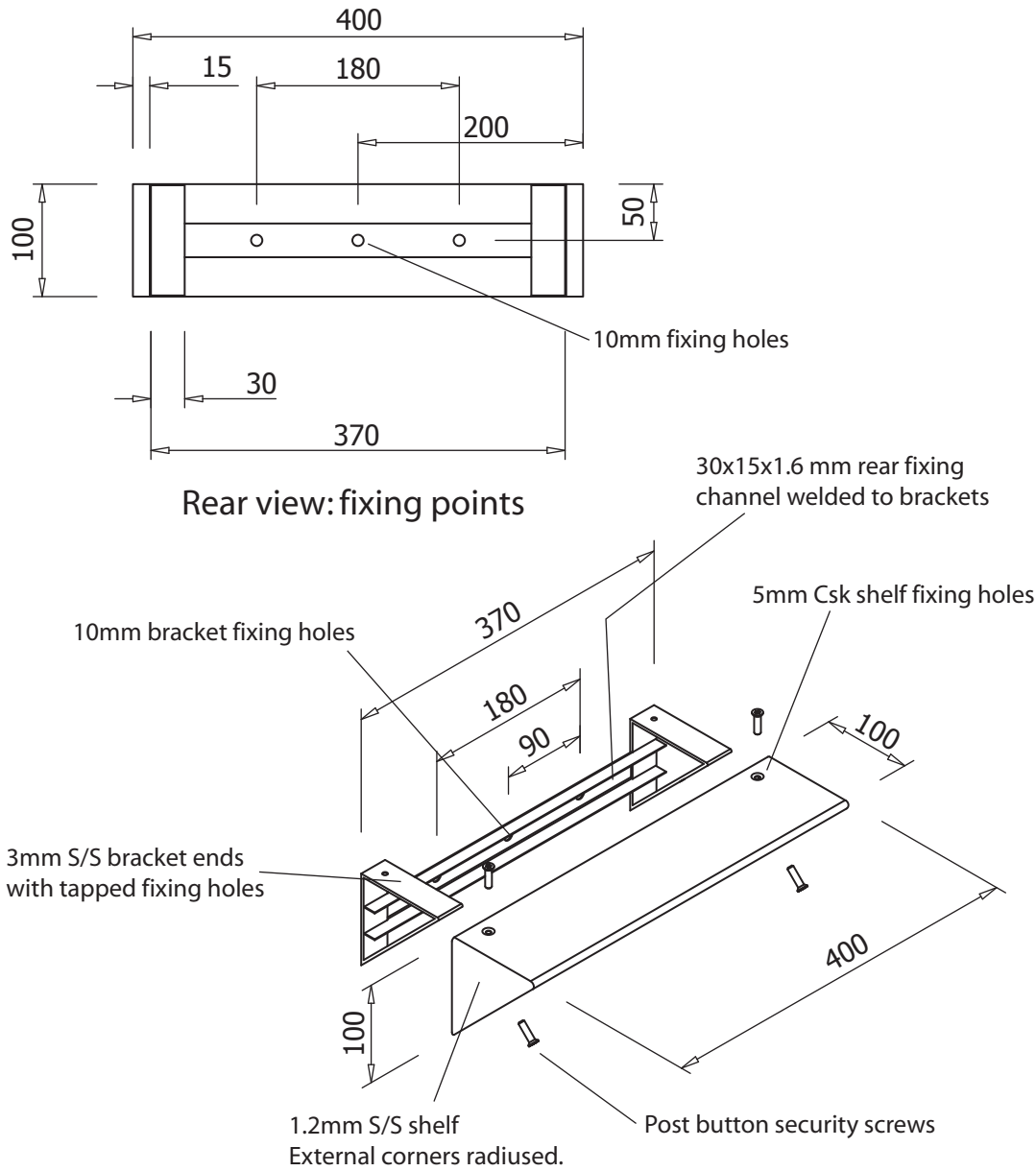
BRITEX

BRITEX Security Shelving comprises a vandal resistant profile, one piece unit which can be surface mounted to walls or fixtures via concealed fixings. The shelves are available in various lengths.

SSHE

PRODUCT CODE:

SSHE



SPECIFICATIONS

When specifying this product, please include the following details;

- Product **Name** and **Model No.**
- Product **Length** and **Width.**

OPTIONS

- Multiples.

SSHE

Melbourne
 Britex Place, Mirra Court
 Bundoora
 Victoria 3083
 Telephone 1300 764 744
 Fax (03) 9466 9044

Sydney
 Unit 11, 16-18 Northumberland Rd
 Taren Point
 New South Wales 2229
 Telephone 1300 764 744
 Fax (02) 9531 2800



BRITEX
 STAINLESS STEEL FABRICATED PRODUCTS

SINCE 1938

www.britex.com.au

e-mail info@britex.com.au
 A.B.N. 83 004 309 737

Represented in all states of Australia, throughout Asia and the Pacific Regions.
 All product manufacturing by **BRITEX** can be adapted to suit your special application.
 Allow 5mm tolerance for setout dimensions given in these drawings. Details accurate at time of print.
 As **BRITEX** is always committed to improving on design and quality, it is possible that some details may alter without notice.

SECURITY SHELVING